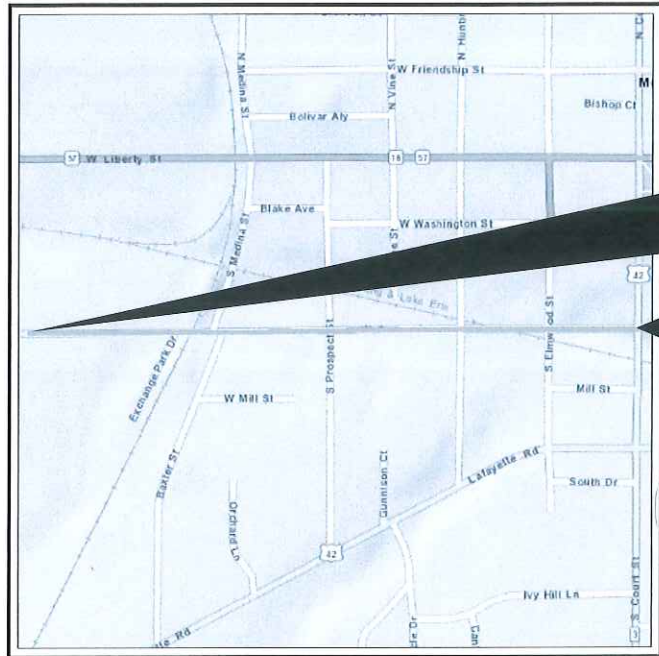


**STATE OF OHIO
DEPARTMENT OF TRANSPORTATION**

**MED CR 0004 15.47
(W SMITH ROAD)**

CITY OF MEDINA
MEDINA COUNTY



LOCATION MAP

LATITUDE: 41°08'10" LONGITUDE: 81°52'42"



PORTION TO BE IMPROVED	-----
INTERSTATE HIGHWAY	=====
FEDERAL ROUTES	-----
STATE ROUTES	-----
COUNTY & TOWNSHIP ROADS	-----
OTHER ROADS	-----

DESIGN DESIGNATION

CURRENT ADT (2015)	7,787
DESIGN YEAR ADT (2045)	10,496
DESIGN HOURLY VOLUME (20)	
DIRECTIONAL DISTRIBUTION	
TRUCKS (24 HOUR B&C)	373
DESIGN SPEED	35
LEGAL SPEED	25/35
DESIGN FUNCTIONAL CLASSIFICATION:	URBAN COLLECTOR
NHS PROJECT	

DESIGN EXCEPTIONS

ADA DESIGN WAIVERS

UNDERGROUND UTILITIES
Contact Two Working Days Before You Dig

OHIO811.org
Before You Dig

OHIO811, 8-1-1, or 1-800-362-2764
(Non members must be called directly)

PLAN PREPARED BY:

AMERICAN STRUCTUREPOINT INC.
600 SUPERIOR AVENUE, SUITE 1305
CLEVELAND, OH 44114
TEL 614.901.2235 FAX 614.901.2236
www.structurepoint.com

INDEX OF SHEETS:

TITLE SHEET	P.01
SCHEMATIC PLAN	P.02
TYPICAL SECTIONS	P.03 - P.10
GENERAL NOTES	P.11
MEDINA STANDARD CONSTRUCTION DRAWINGS	
MAINTENANCE OF TRAFFIC	P.12
GENERAL SUMMARY	
ESTIMATED QUANTITIES	
PLAN AND PROFILE - SMITH	P.13 - P.20
PLAN AND PROFILE - BAXTER	P.21
PLAN AND PROFILE - MEDINA	P.22
CROSS SECTIONS - SMITH	P.23 - P.60
CROSS SECTIONS BAXTER	P.61 - P.62
CROSS SECTIONS - MEDINA	P.63 - P.64
INTERSECTION DETAILS	P.65 - P.69
DRIVEWAY DETAILS	P.70
CULVERT DETAILS	P.71
STORM PROFILES	P.72 - P.77
PAVEMENT MARKING PLAN	P.78 - P.82
RIGHT-OF-WAY PLANS	P.83 - P.104

FEDERAL PROJECT NUMBER

E200691

RAILROAD INVOLVEMENT

WHEELING AND LAKE ERIE RAILWAY (W&LE)

PROJECT DESCRIPTION

THE PROJECT INVOLVES THE FULL DEPTH PAVEMENT REPLACEMENT ON WEST SMITH ROAD FROM A POINT 300 FEET EAST OF STATE ROAD TO US 42 (SOUTH COURT STREET). MINOR PROFILE ADJUSTMENTS WILL BE MADE TO IMPROVE DRAINAGE. WORK ALSO INCLUDES THE REALIGNMENT OF BAXTER STREET AND MEDINA STREET, THE INSTALLATION OF A NEW 12" WATER LINE AND APPURTENANCES, MINOR SANITARY REPAIRS, AND THE REPLACEMENT OF THE EXISTING STORM WATER CONDUITS AND APPURTENANCES.

EARTH DISTURBED AREAS

PROJECT EARTH DISTURBED AREA:	ACRES
ESTIMATED CONTRACTOR EARTH DISTURBED AREA:	ACRES
NOTICE OF INTENT EARTH DISTURBED AREA:	ACRES

TRAFFIC DETOURED NOTE

I HEREBY APPROVE THESE PLANS AND DECLARE THAT THE MAKING OF THIS IMPROVEMENT WILL NOT REQUIRE THE CLOSING TO TRAFFIC OF THE HIGHWAY EXCEPT AS NOTED ON SHEET ____, AND THAT PROVISIONS FOR THE MAINTENANCE AND SAFETY OF TRAFFIC WILL BE AS SET FORTH ON THE PLANS AND ESTIMATES

2019 SPECIFICATIONS

THE STANDARD SPECIFICATIONS OF THE STATE OF OHIO, DEPARTMENT OF TRANSPORTATION, INCLUDING SUPPLEMENTAL SPECIFICATIONS LISTED IN THE PLANS AND CHANGES LISTED IN THE PROPOSAL SHALL GOVERN THIS IMPROVEMENT.

MAYOR – DENNIS HANWELL
COUNCIL PRESIDENT – JOHN COYNE III
WARD 1 – JESSICA HAZELTINE
WARD 2 – DENNIE R. SIMPSON
WARD 3 – ERIC M. HEFFINGER
WARD 4 – JIM SHIELDS
AT LARGE – PAUL ROSE
AT LARGE – BILL LAMB

DRAFT

ENGINEER'S SEAL:	STANDARD CONSTRUCTION DRAWINGS				SUPPLEMENTAL SPECIFICATIONS	SPECIAL PROVISIONS
SIGNED: _____ DATE: _____						

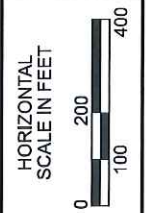
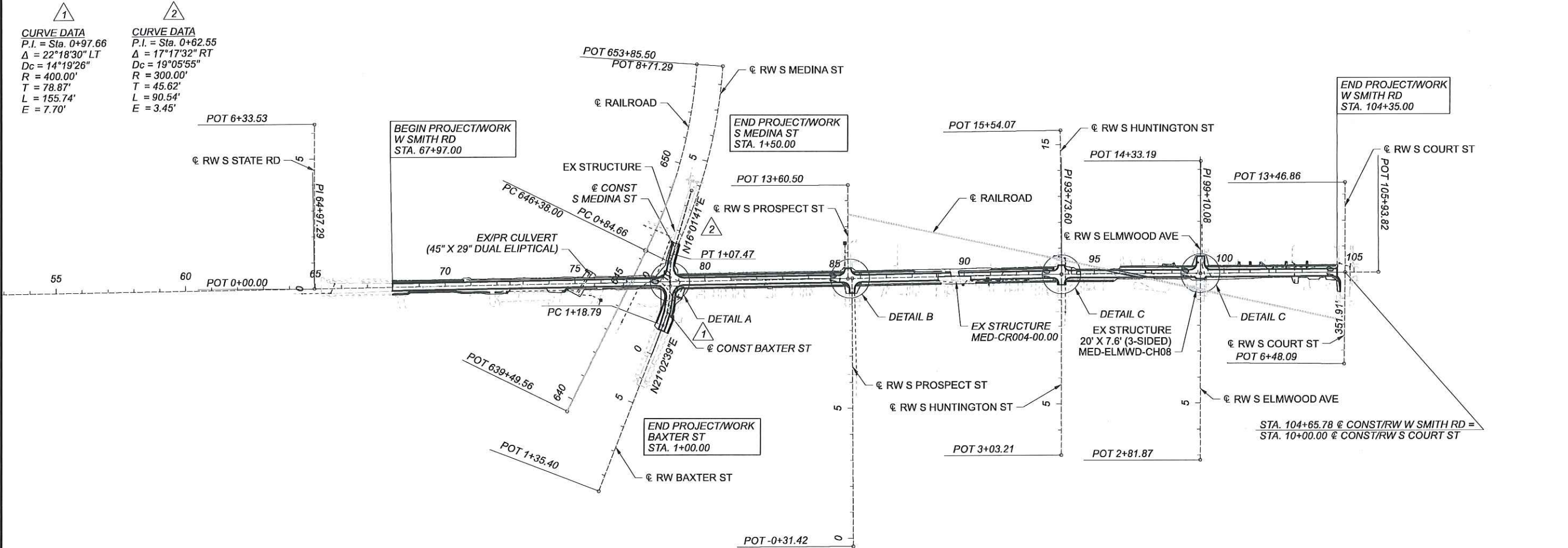
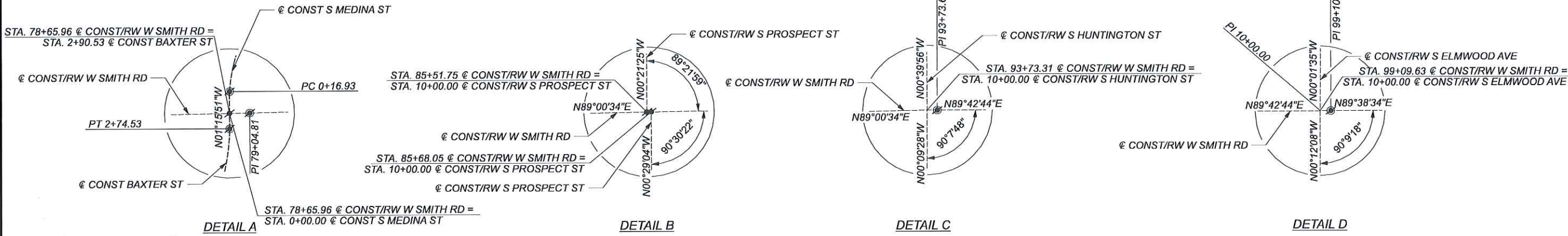
APPROVED _____
DATE _____ CITY ENGINEER - CITY OF MEDINA

MED CR 0004 15.47 (W SMITH ROAD)

MODEL: 112540_G1001 PAPER SIZE: 34x22 (in.) DATE: 1/5/2021 TIME: 3:31:01 PM USER: addaker
C:\2019\015481C_Design\112540_Smith\400-Engineering\Roadway\Sheets\112540_G1001.dgn

TITLE SHEET

DESIGN AGENCY	STRUCTUREPOINT INC.
DESIGNER	
REVIEWER	12/07/20
PROJECT ID	112540
SHEET	TOTAL
P.01	104



SCHEMATIC PLAN

SURVEY CONTROL POINTS

COORDINATES ARE GROUND COORDINATES, BASED ON OHIO STATE PLANE COORDINATE SYSTEM, NORTH ZONE, NORTH AMERICAN DATUM OF 1983 (2011 ADJUSTMENT), AS ESTABLISHED UTILIZING A GPS SURVEY AND AN NGS OPUS SOLUTION. A PROJECT ADJUSTMENT FACTOR OF 1.0001059341 WAS APPLIED ABOUT C.P. 1500 TO OBTAIN GROUND COORDINATES

CP #	NORTHING	EASTING	ELEVATION	STATION	OFFSET	ALIGNMENT	DESCRIPTION
1100	536359.043	2141821.745		13+33.58	57.19' RT	CL R/W PROSPECT (N)	5/8" IRON PIN SET W/ "ASI CONTROL POINT" CAP
1101	536066.889	2143767.656		105+53.04	20.87' LT	CL R/W SMITH	5/8" IRON PIN SET W/ "ASI CONTROL POINT" CAP
1102	536022.793	2143043.480		98+28.63	18.81' RT	CL R/W SMITH	5/8" IRON PIN SET W/ "ASI CONTROL POINT" CAP
1103	536034.993	2139688.411		64+73.85	45.56' LT	CL R/W SMITH	5/8" IRON PIN SET W/ "ASI CONTROL POINT" CAP
1104	535968.256	2140173.548		00+45.26	24.02' LT	CL R/W STATE	5/8" IRON PIN SET W/ "ASI CONTROL POINT" CAP
1106	536125.528	2141110.905		69+57.92	29.42' RT	CL R/W SMITH	5/8" IRON PIN SET W/ "ASI CONTROL POINT" CAP
1108	535775.820	2141007.897		01+31.46	12.46' RT	CL R/W MEDINA	5/8" IRON PIN SET W/ "ASI CONTROL POINT" CAP
1110	536034.349	2141115.532		07+37.59	18.93' LT	CL R/W BAXTER	5/8" IRON PIN SET W/ "ASI CONTROL POINT" CAP
1111	536002.154	2141759.972		79+00.90	20.49' LT	CL R/W SMITH	5/8" IRON PIN SET W/ "ASI CONTROL POINT" CAP
1113	536003.650	2142167.058		85+44.69	22.84' RT	CL R/W SMITH	5/8" IRON PIN SET W/ "ASI CONTROL POINT" CAP
1114	536015.354	2142656.231		09+76.95	23.15' LT	CL R/W PROSPECT (S)	5/8" IRON PIN SET W/ "ASI CONTROL POINT" CAP
1117	536385.502	2143109.358		89+51.74	28.38' RT	CL R/W SMITH	MAG NAIL SET
1118	535695.873	2143143.101		94+41.35	24.31' RT	CL R/W SMITH	5/8" IRON PIN SET W/ "ASI CONTROL POINT" CAP
				13+43.50	14.87' LT	CL R/W ELMWOOD	5/8" IRON PIN SET W/ "ASI CONTROL POINT" CAP
				06+53.80	17.50' RT	CL R/W ELMWOOD	5/8" IRON PIN SET W/ "ASI CONTROL POINT" CAP

PROJECT CONTROL	
Positioning Method	VRS GNSS SURVEY
Monument Type	TYPE B

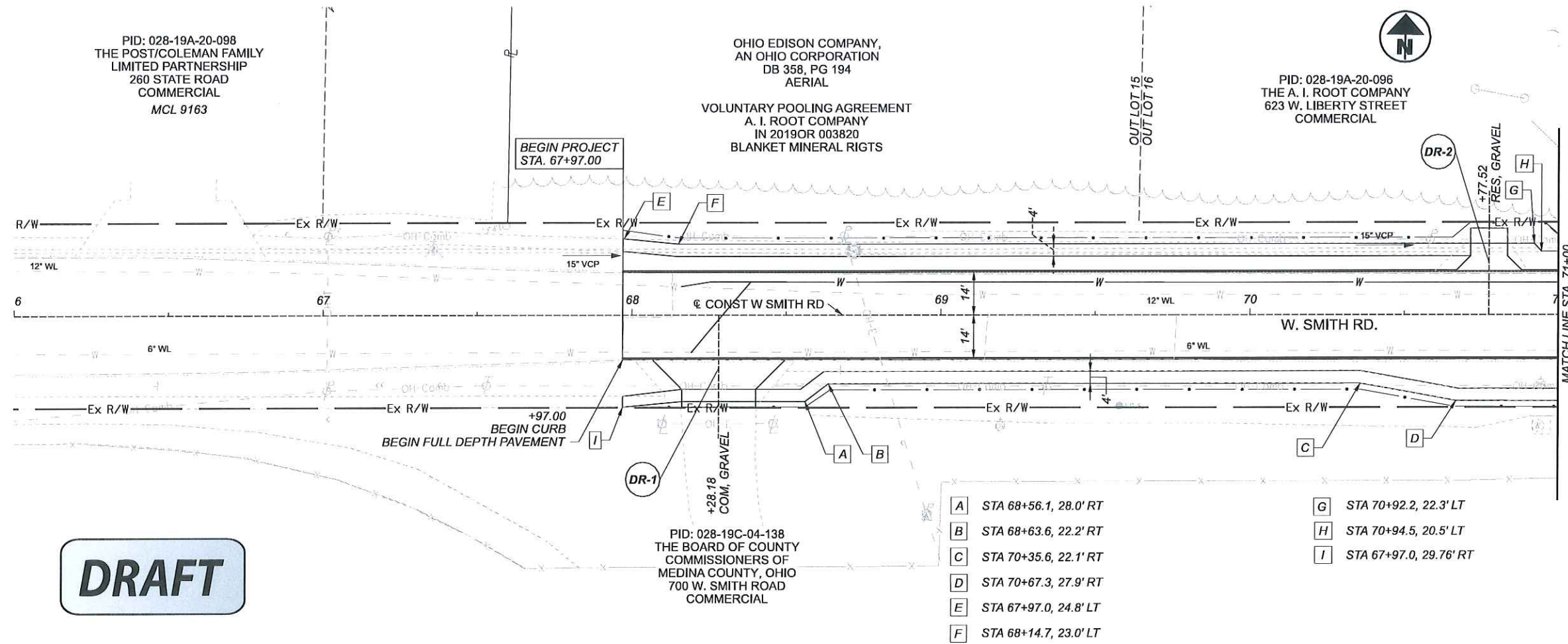
VERTICAL POSITIONING	
Orthometric Height Datum	NAVD '88
Geoid	GEOID 12B

HORIZONTAL POSITIONING	
Reference Frame	NAD 83 (2011)
Ellipsoid	GRS80
Map Projection	LAMBERT CONFORMAL CONIC
Coordinate System	OHIO (NORTH)
Combined Scale Factor (Grid to Gound)	1.000105934
Origin of Coord. System (Origin for Scaling)	CP 100 (536359.043, 2141821.745)

FOR BENCHMARK INFORMATION, SEE GENERAL NOTES SHEET P.11.

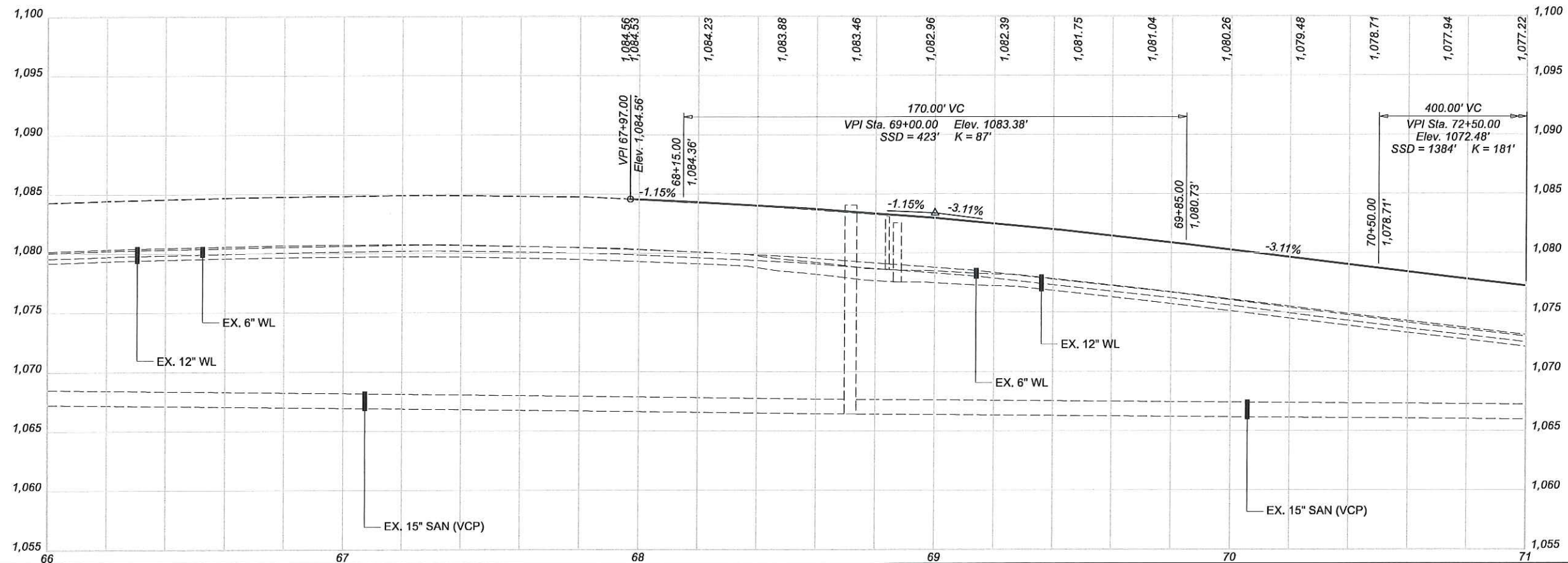
DRAFT

DESIGN AGENCY	AMERICAN STRUCTUREPOINT INC.
DESIGNER	XXX
REVIEWER	XXX
PROJECT ID	112540
SHEET	P.02
TOTAL	104



DRAFT

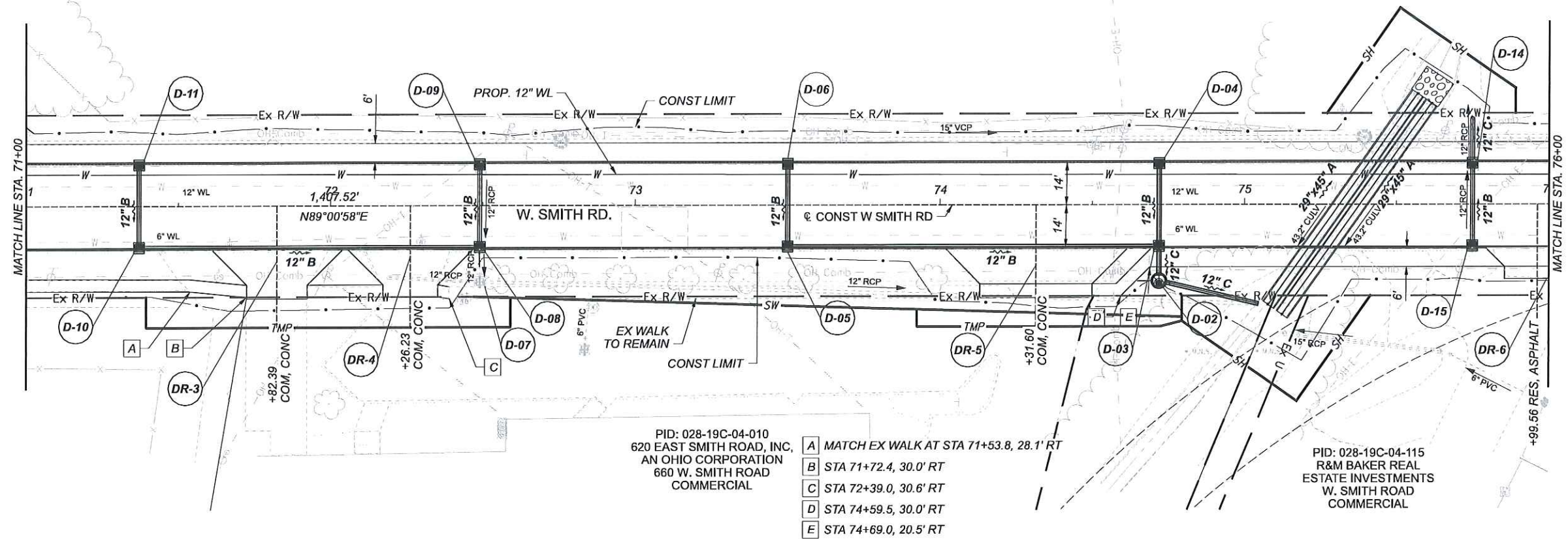
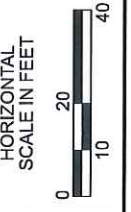
- | | | | |
|----------|-----------------------|----------|------------------------|
| A | STA 68+56.1, 28.0' RT | G | STA 70+92.2, 22.3' LT |
| B | STA 68+63.6, 22.2' RT | H | STA 70+94.5, 20.5' LT |
| C | STA 70+35.6, 22.1' RT | I | STA 67+97.0, 29.76' RT |
| D | STA 70+67.3, 27.9' RT | | |
| E | STA 67+97.0, 24.8' LT | | |
| F | STA 68+14.7, 23.0' LT | | |



**PLAN AND PROFILE - W SMITH RD
 STA 66+00 TO STA 71+00**

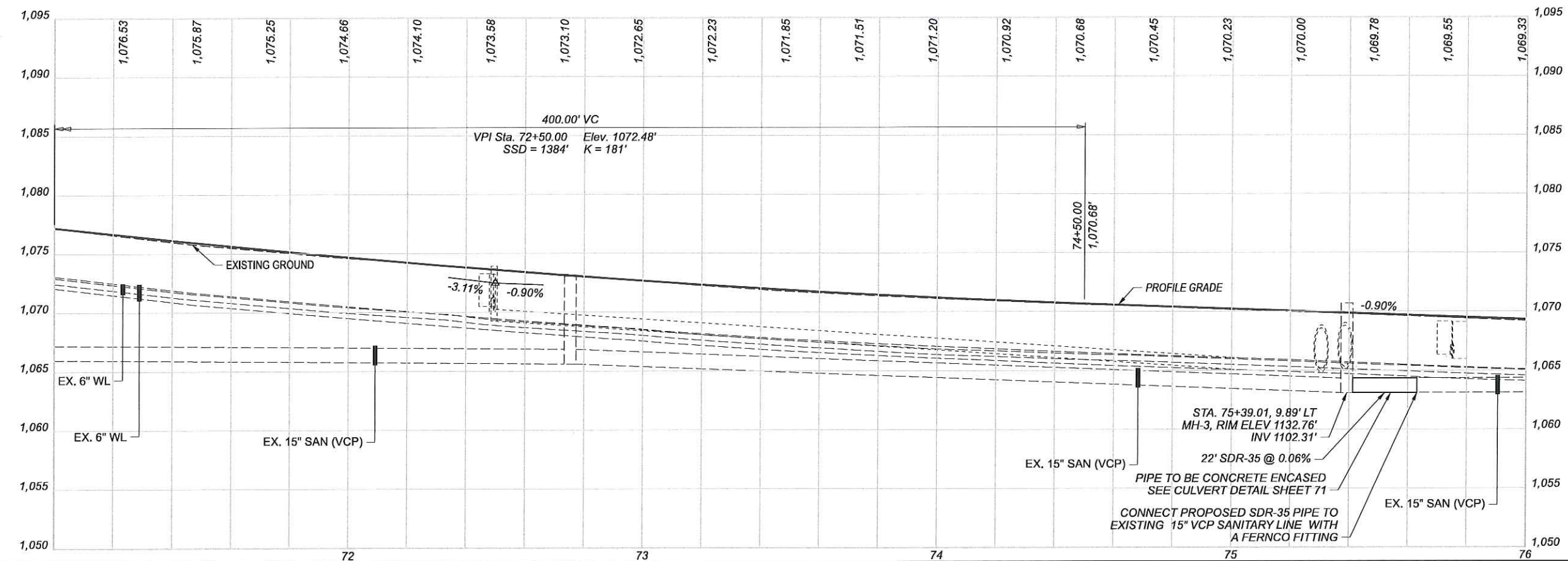
DESIGN AGENCY	
STRUCTUREPOINT INC.	
DESIGNER	XXX
REVIEWER	XXX
PROJECT ID	112540
SHEET	TOTAL
P.13	104

DRAFT



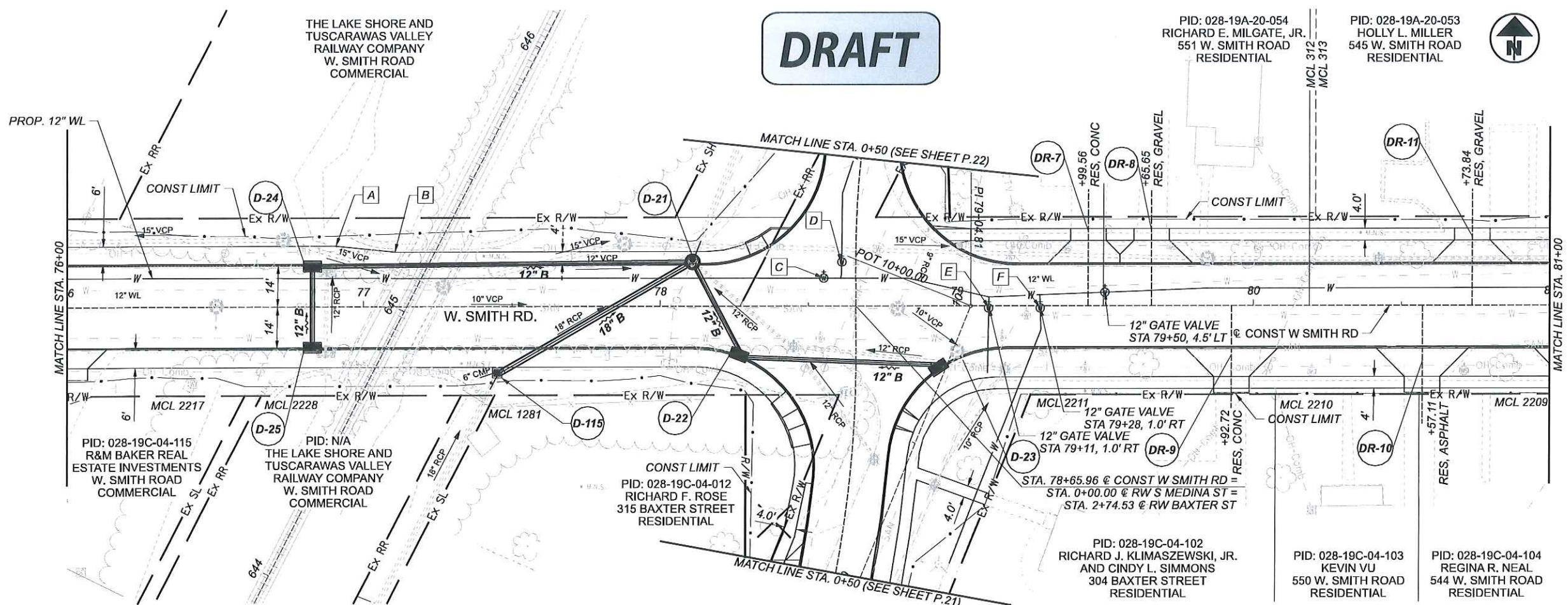
- PID: 028-19C-04-010
 620 EAST SMITH ROAD, INC.
 AN OHIO CORPORATION
 660 W. SMITH ROAD
 COMMERCIAL
- A MATCH EX WALK AT STA 71+53.8, 28.1' RT
 - B STA 71+72.4, 30.0' RT
 - C STA 72+39.0, 30.6' RT
 - D STA 74+59.5, 30.0' RT
 - E STA 74+69.0, 20.5' RT

PID: 028-19C-04-115
 R&M BAKER REAL
 ESTATE INVESTMENTS
 W. SMITH ROAD
 COMMERCIAL

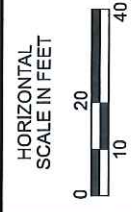


**PLAN AND PROFILE - W SMITH RD
 STA 71+00 TO STA 76+00**

DESIGN AGENCY	
STRUCTUREPOINT AMERICA INC.	
DESIGNER	XXX
REVIEWER	XXX
PROJECT ID	112540
SHEET	TOTAL
P.14	104

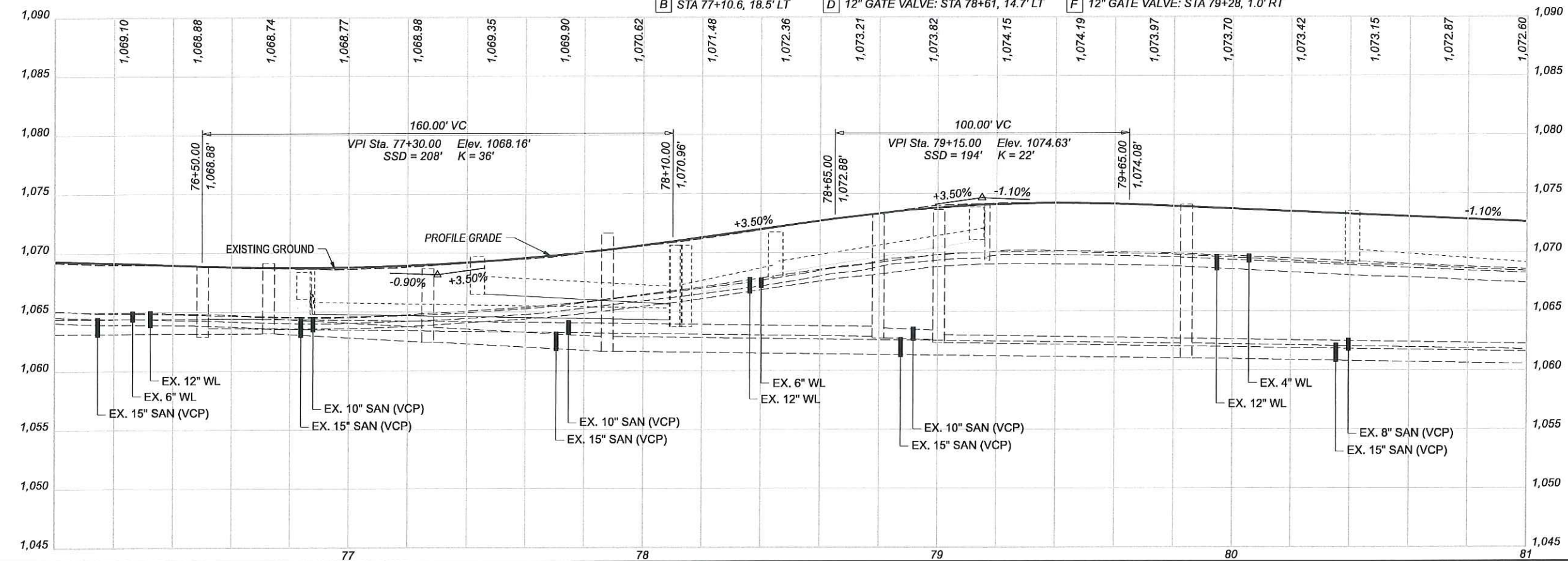


DRAFT



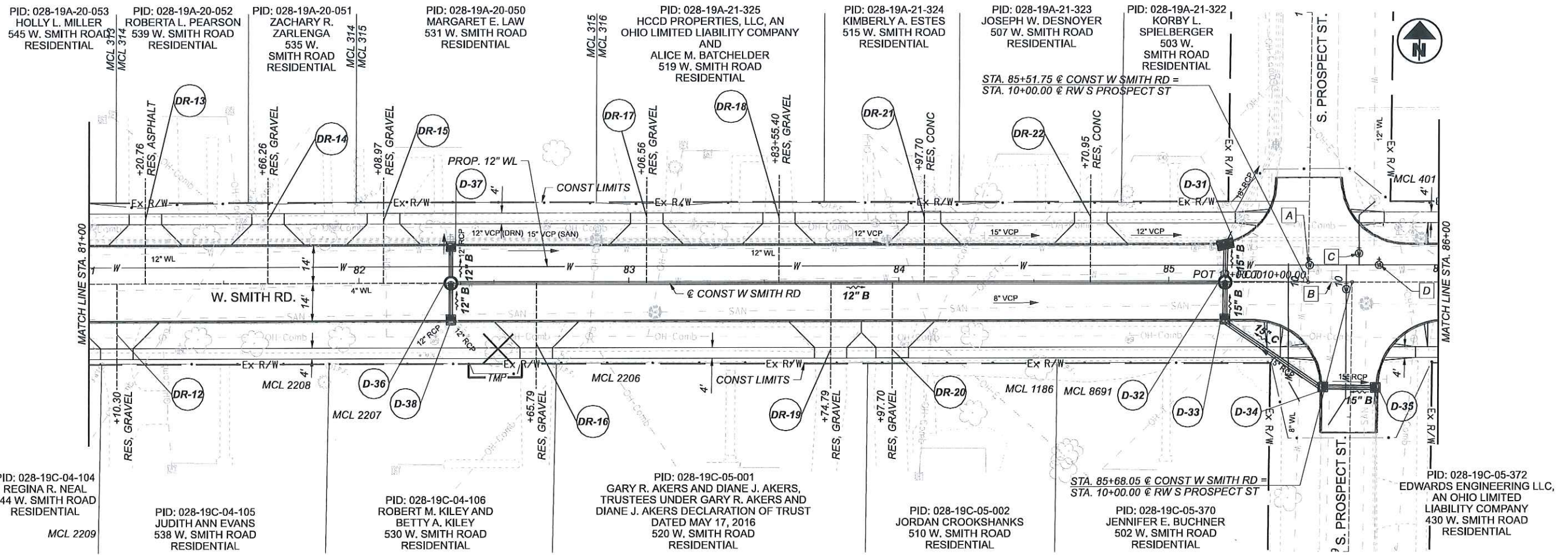
FOR INTERSECTION DETAILS, SEE SHEET P.65

- A STA 76+90.6, 20.5' LT
- C 12" GATE VALVE: STA 77+55, 9.4' LT
- E 12" GATE VALVE: STA 79+11, 1.0' RT
- G 12" GATE VALVE: STA 79+50, 4.5' LT
- B STA 77+10.6, 18.5' LT
- D 12" GATE VALVE: STA 78+61, 14.7' LT
- F 12" GATE VALVE: STA 79+28, 1.0' RT



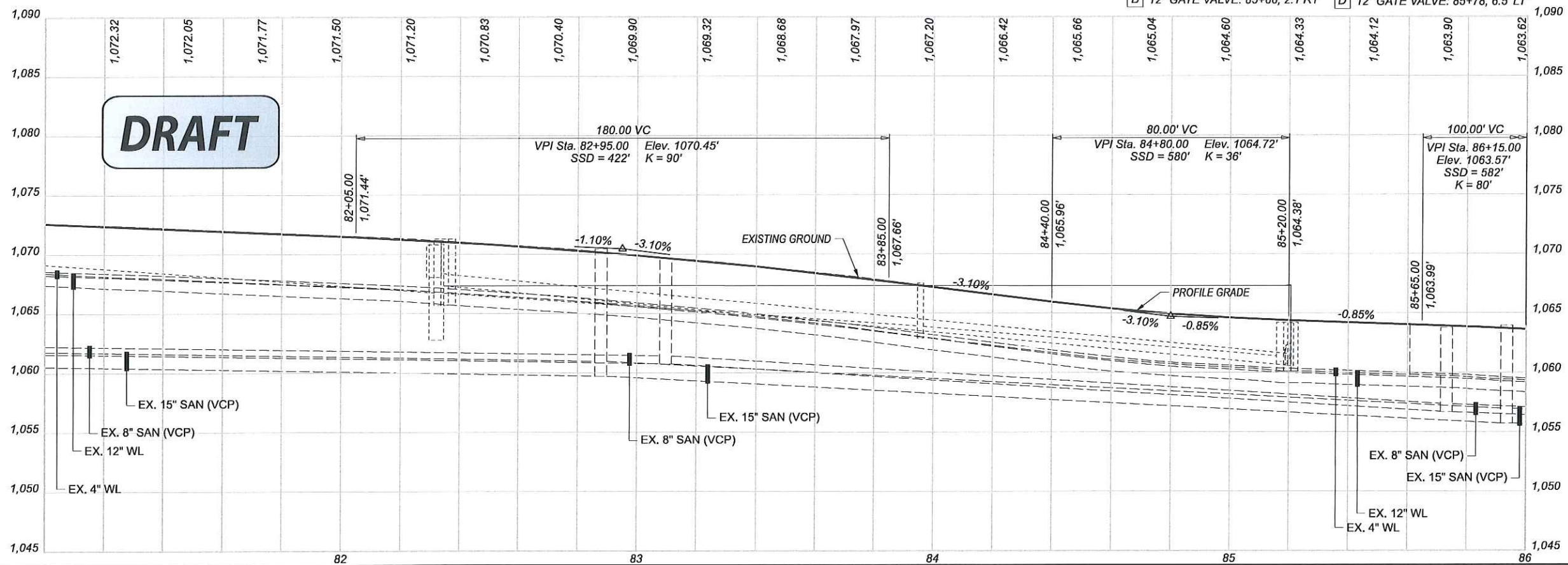
PLAN AND PROFILE - W SMITH RD
STA 76+00 TO STA 81+00

DESIGN AGENCY	
STRUCTUREPOINT <small>AMERICAN</small>	
DESIGNER	XXX
REVIEWER	XXX
PROJECT ID	112540
SHEET	TOTAL
P.15	104

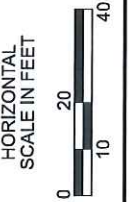


FOR INTERSECTION DETAILS, SEE SHEET P.66

A	12" GATE VALVE: 85+52, 6.5' RT	C	12" GATE VALVE: 85+70, 10.8' LT
B	12" GATE VALVE: 85+66, 2.1 RT	D	12" GATE VALVE: 85+78, 6.5' LT



DRAFT

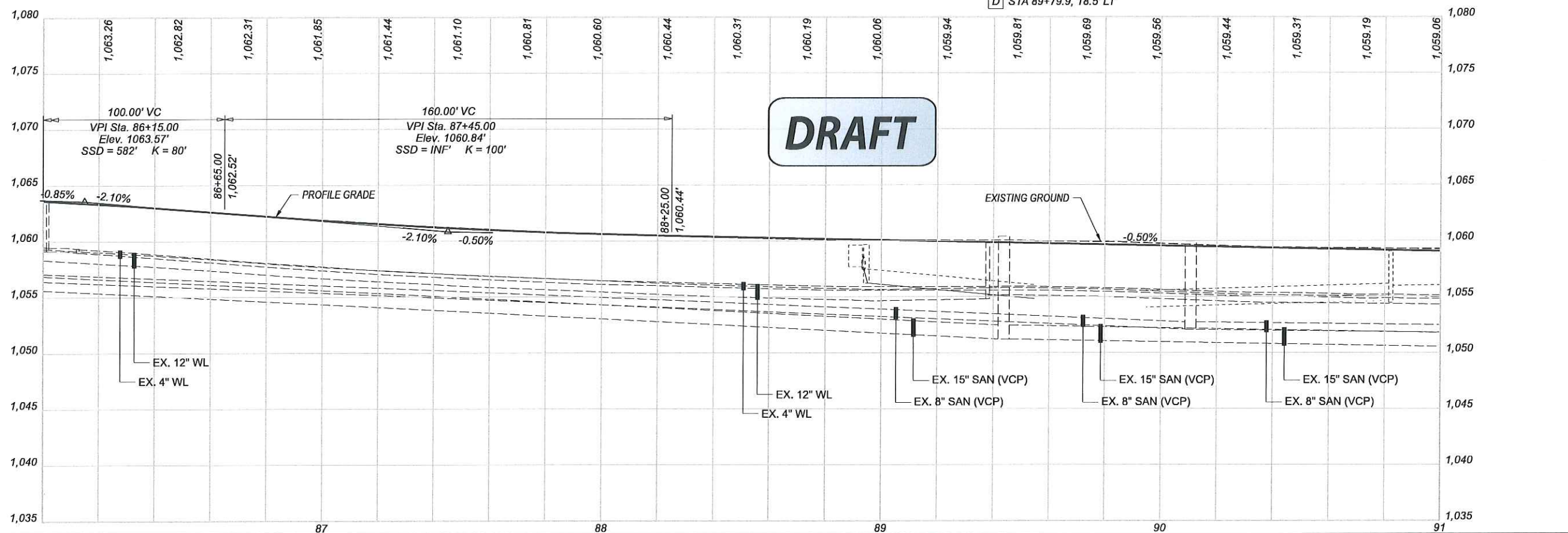
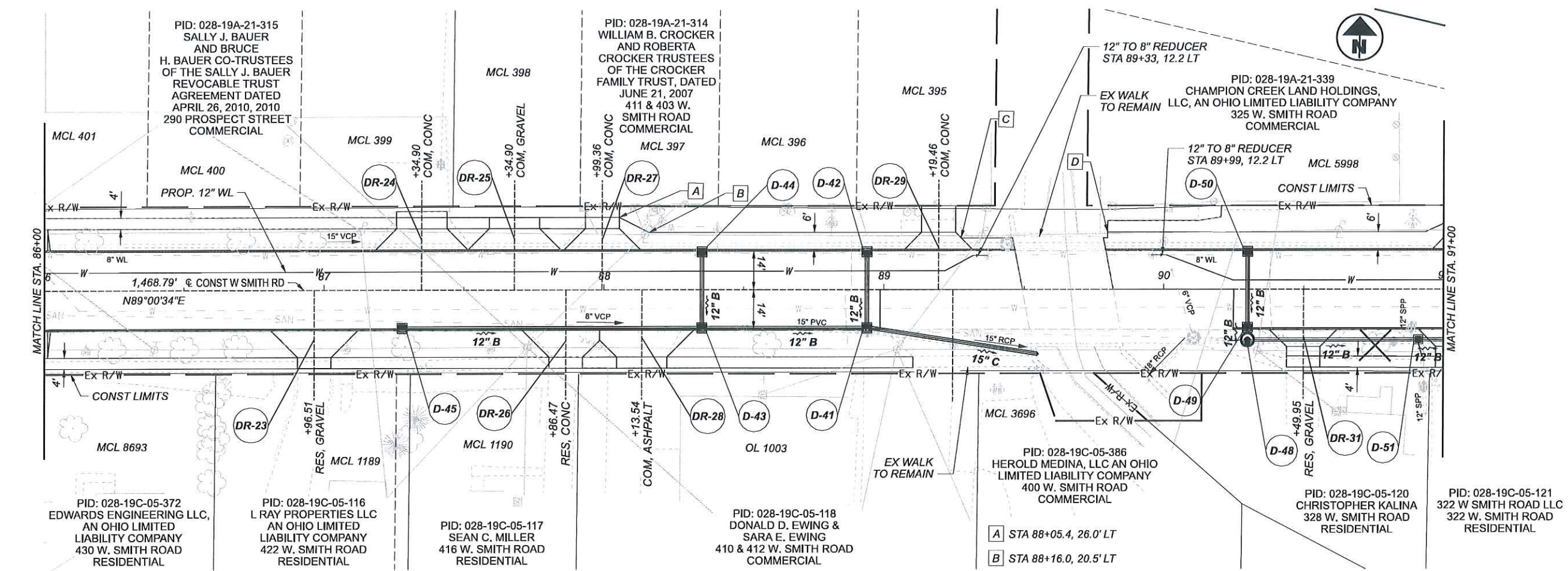


PLAN AND PROFILE - W SMITH RD
 STA 81+00 TO STA 86+00

DESIGN AGENCY	
AMERICAN STRUCTUREPOINT INC.	
DESIGNER	XXX
REVIEWER	XXX
PROJECT ID	112540
SHEET	TOTAL
P.16	104

MED CR 0004 15.47 (W SMITH ROAD)

MODEL: I2540_GPO05_Plan-Profile PAPER SIZE: 34x22 (in.) DATE: 1/5/2021 TIME: 3:32:48 PM USER: coldaker
 C:\2019\01547\15.47\1540_SmithRoad-Engineering\Roadway\Sheet\1540_GPO05.dgn



DRAFT

- A STA 88+05.4, 26.0' LT
- B STA 88+16.0, 20.5' LT
- C STA 89+27.5, 18.5' LT
- D STA 89+79.9, 18.5' LT

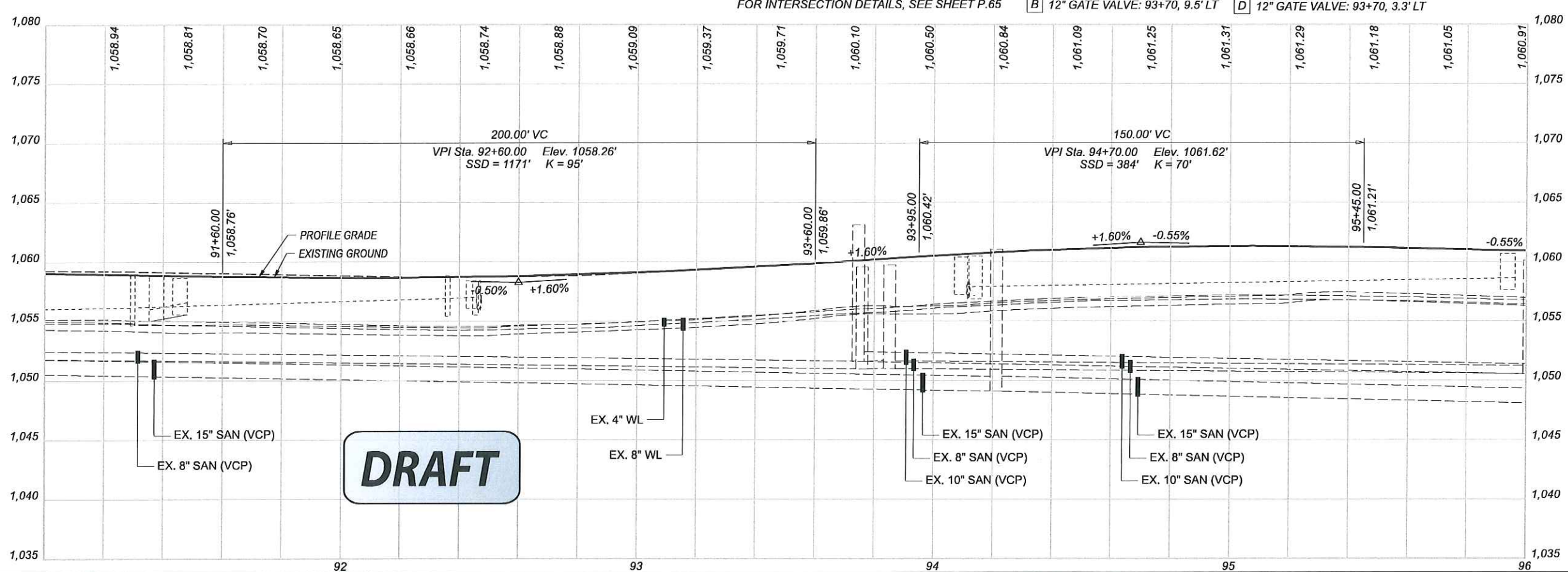


PLAN AND PROFILE - W SMITH RD
 STA 86+00 TO STA 91+00

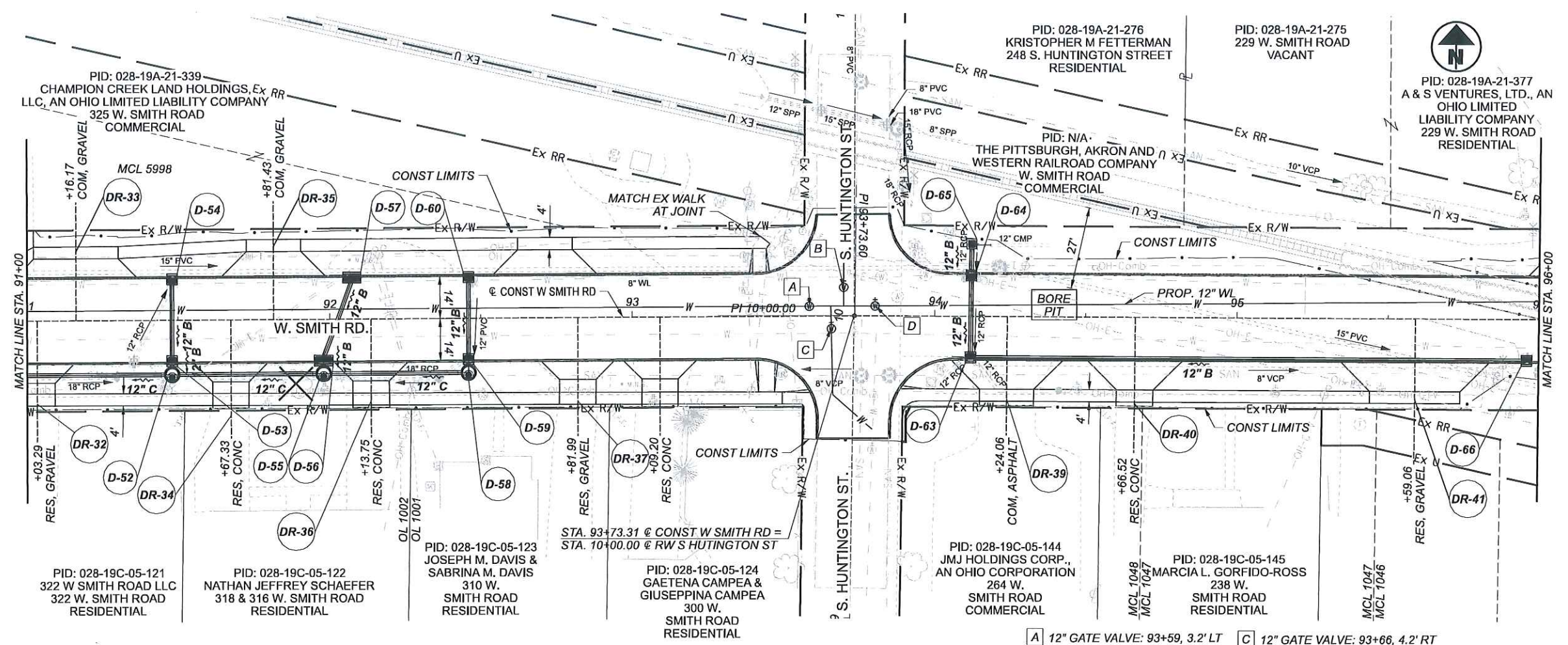
DESIGN AGENCY	
STRUCTUREPOINT INC.	
DESIGNER	XXX
REVIEWER	XXX
PROJECT ID	112540
SHEET	TOTAL
P.17	104

MED CR 0004 15.47 (W SMITH ROAD)

MODEL: 112540.OP006.Sheet PAPER SIZE: 34x22 (in.) DATE: 1/5/2021 TIME: 3:32:57 PM USER: colcaker
D:\2019\112540.C.Design\112540_Smith\400-Engineering\Roadway\Sheets\112540.OP006.dgn

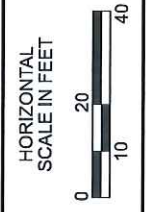


DRAFT



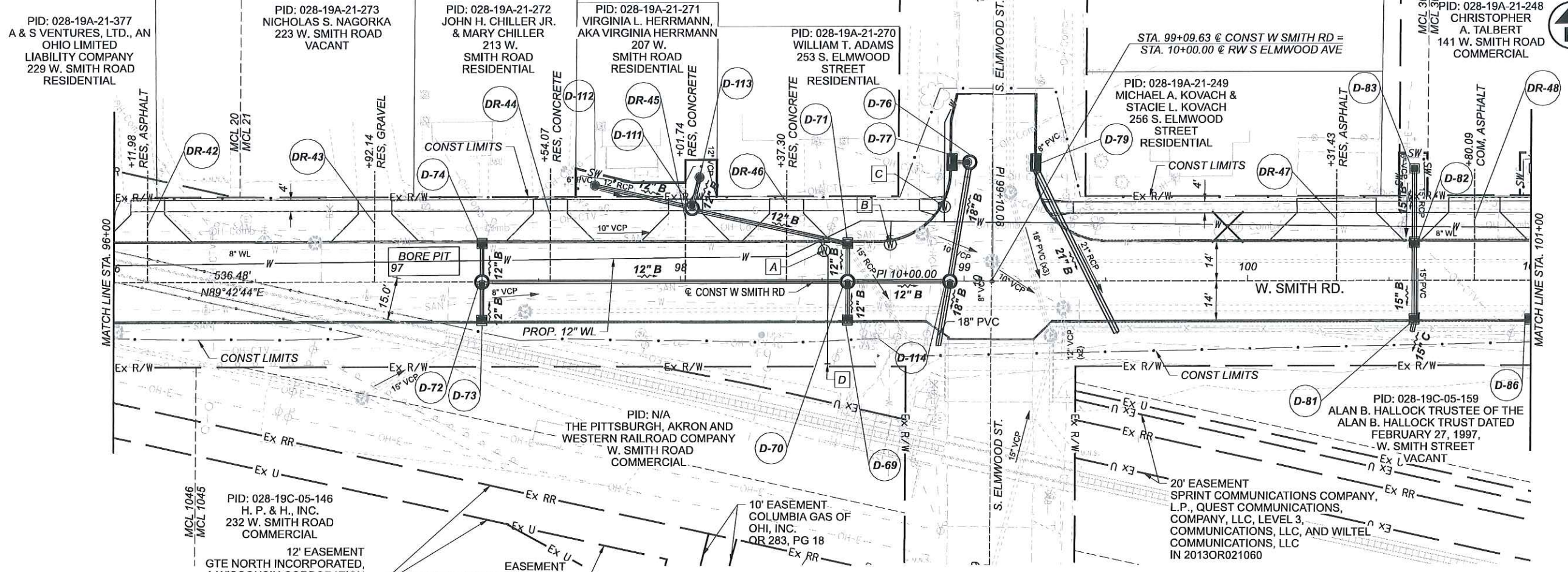
- A 12" GATE VALVE: 93+59, 3.2' LT
- B 12" GATE VALVE: 93+70, 9.5' LT
- C 12" GATE VALVE: 93+66, 4.2' RT
- D 12" GATE VALVE: 93+70, 3.3' LT

FOR INTERSECTION DETAILS, SEE SHEET P.65

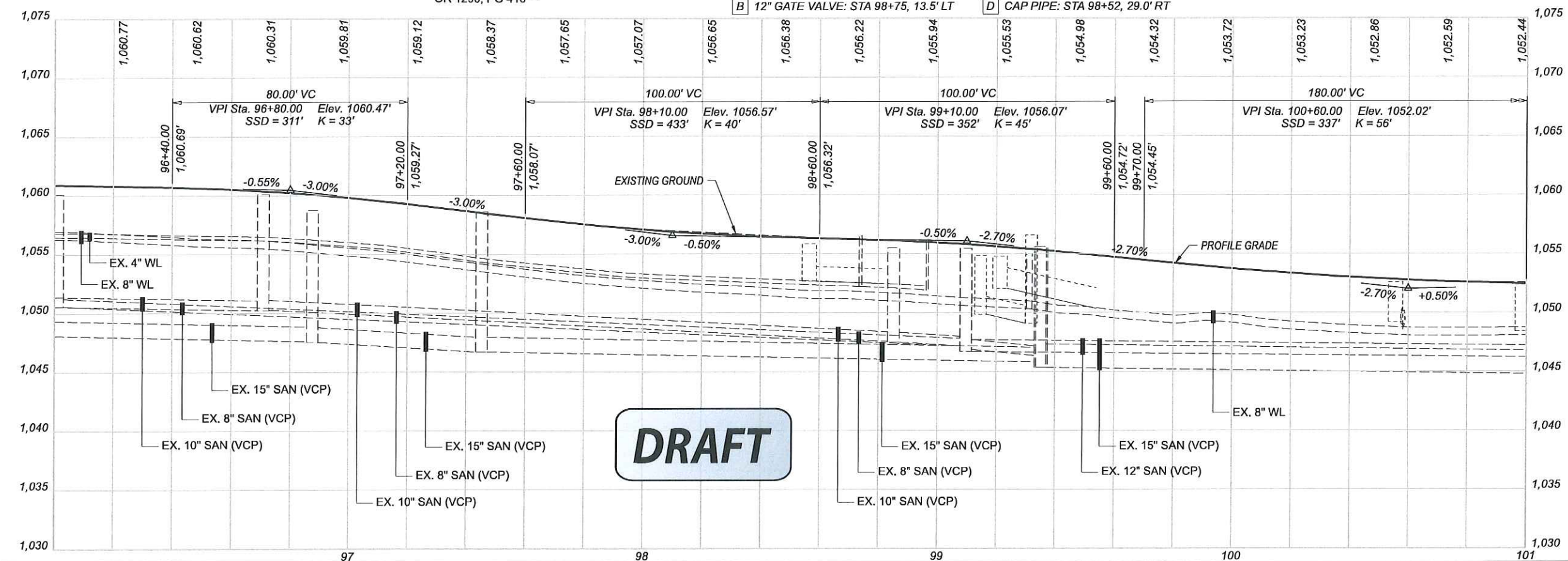


PLAN AND PROFILE - W SMITH RD
STA 91+00 TO STA 96+00

DESIGN AGENCY	AMERICAN STRUCTUREPOINT INC.
DESIGNER	XXX
REVIEWER	XXX
PROJECT ID	112540
SHEET	P.18
TOTAL	104



- A 12" GATE VALVE: STA 98+50, 10.5' LT
- B 12" GATE VALVE: STA 98+75, 13.5' LT
- C 12" GATE VALVE: STA 98+93, 26.2' LT FOR INTERSECTION DETAILS, SEE SHEET P.68
- D CAP PIPE: STA 98+52, 29.0' RT



DRAFT

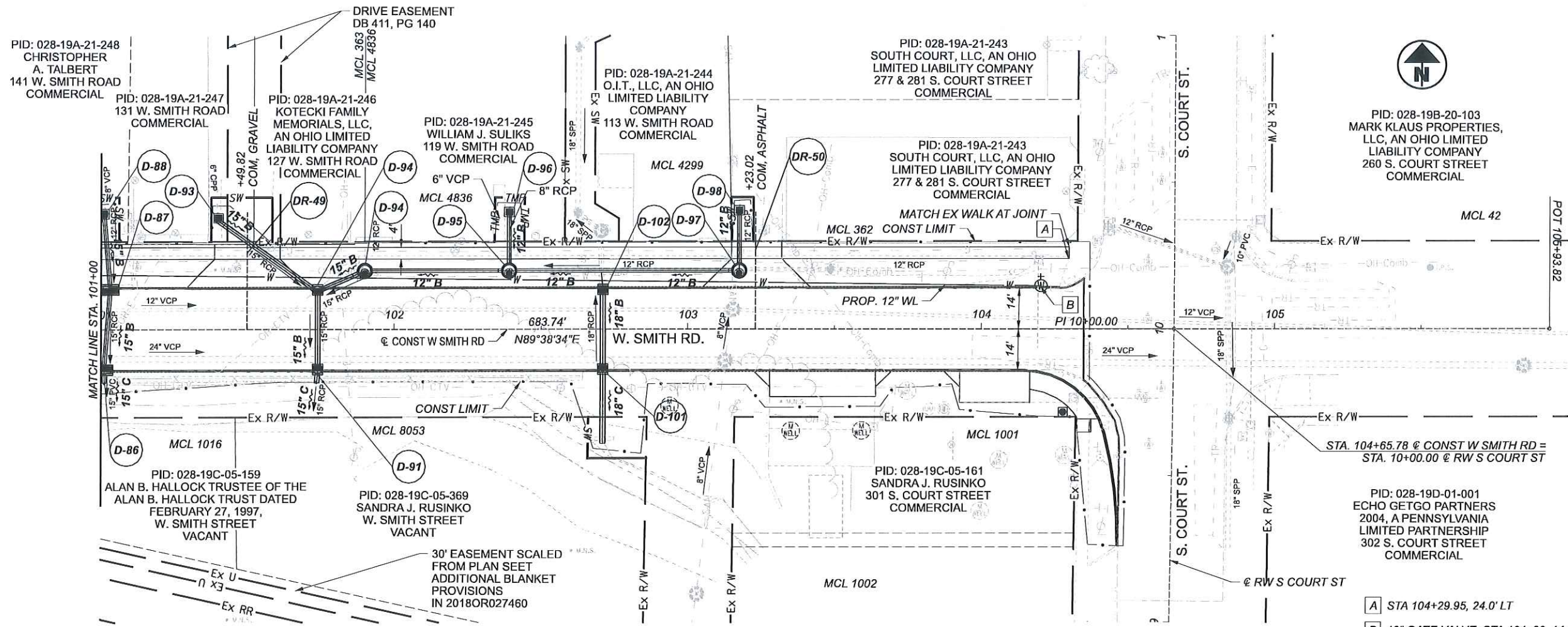


PLAN AND PROFILE - W SMITH RD
 STA 96+00 TO STA 101+00

DESIGN AGENCY	
STRUCTUREPOINT INC.	
DESIGNER	XXX
REVIEWER	XXX 12/07/20
PROJECT ID	112540
SHEET	TOTAL
P.19	104

MED CR 0004 15.47 (W SMITH ROAD)

MODEL: I12540.GP008.Sheet PAPERSET: 3x422 (in.) DATE: 1/6/2021 TIME: 2:31:31 PM USER: oalodcker
 G:\2019\12540\12540_Cr_Smith_400-Eng\Near\Roadway\Sheets\12540_GP008.dgn

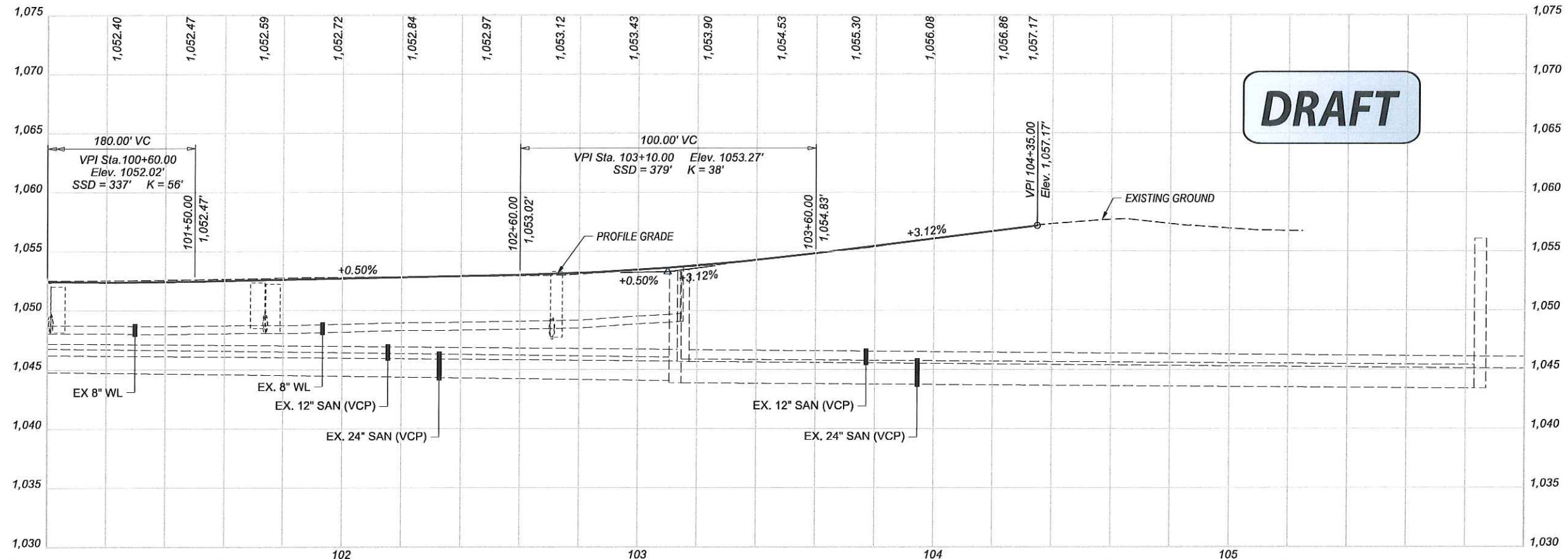


PID: 028-19B-20-103
 MARK KLAUS PROPERTIES,
 LLC, AN OHIO LIMITED
 LIABILITY COMPANY
 260 S. COURT STREET
 COMMERCIAL

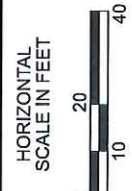
PID: 028-19D-01-001
 ECHO GETGO PARTNERS
 2004, A PENNSYLVANIA
 LIMITED PARTNERSHIP
 302 S. COURT STREET
 COMMERCIAL

- A STA 104+29.95, 24.0' LT
- B 12" GATE VALVE: STA 104+20, 14.7' LT

FOR INTERSECTION DETAILS, SEE SHEET P.69

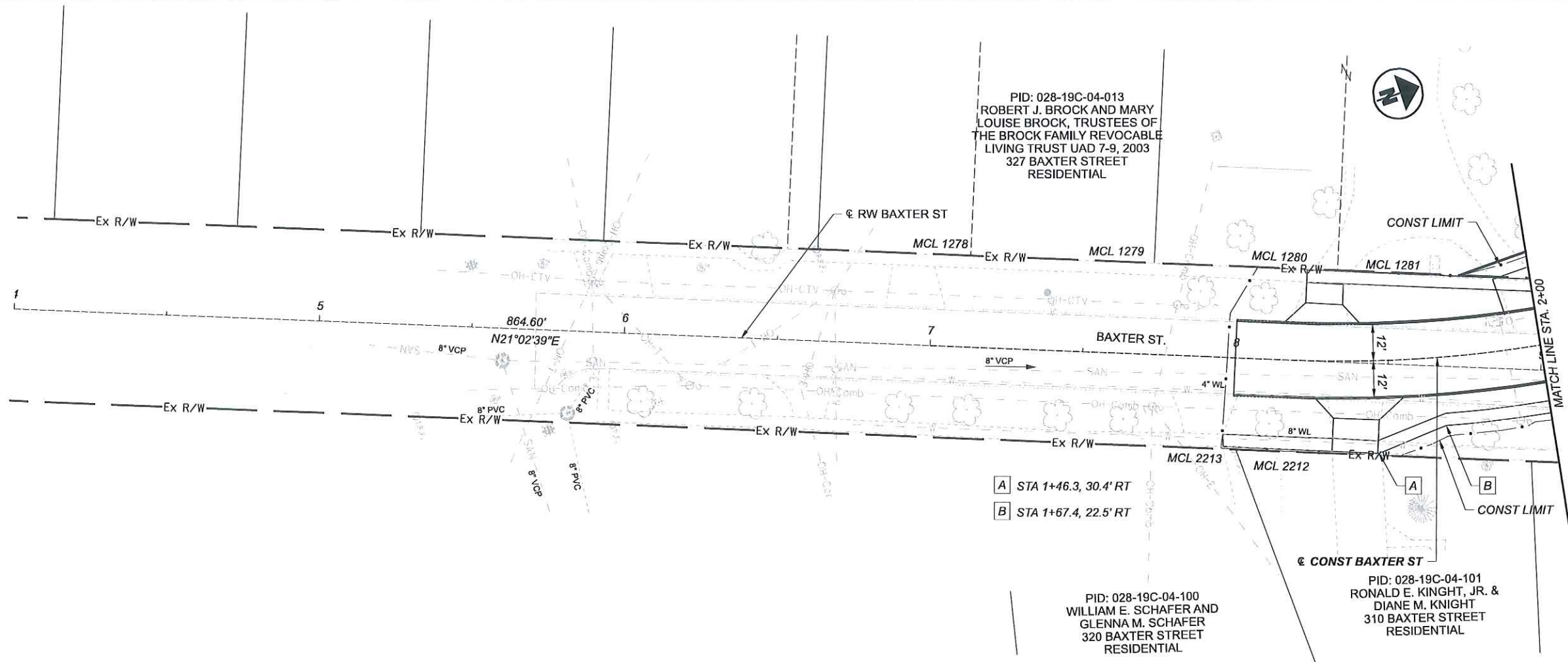


DRAFT

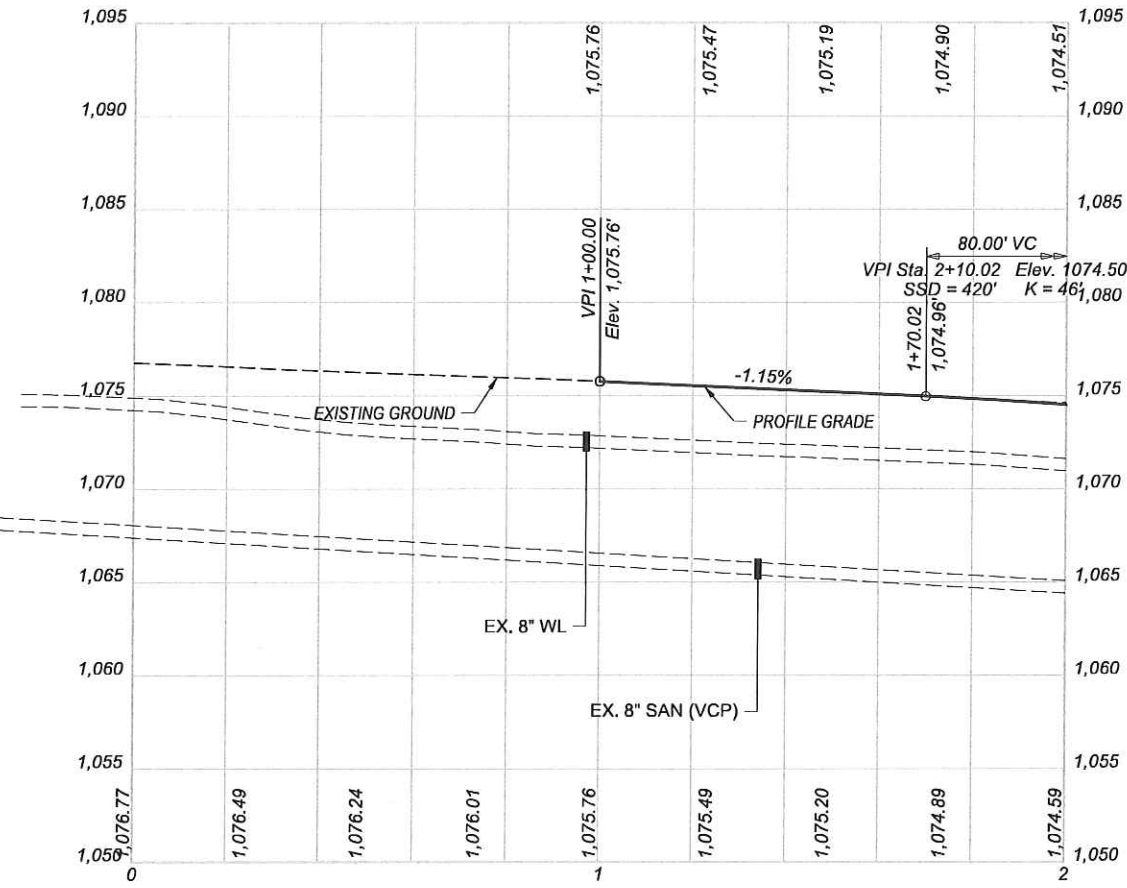


**PLAN AND PROFILE - W SMITH RD
 STA 101+00 TO STA 105+94**

DESIGN AGENCY	
STRUCTUREPOINT INC.	
DESIGNER	XXX
REVIEWER	XXX 12/07/20
PROJECT ID	112540
SHEET	TOTAL
P.20	104



DRAFT

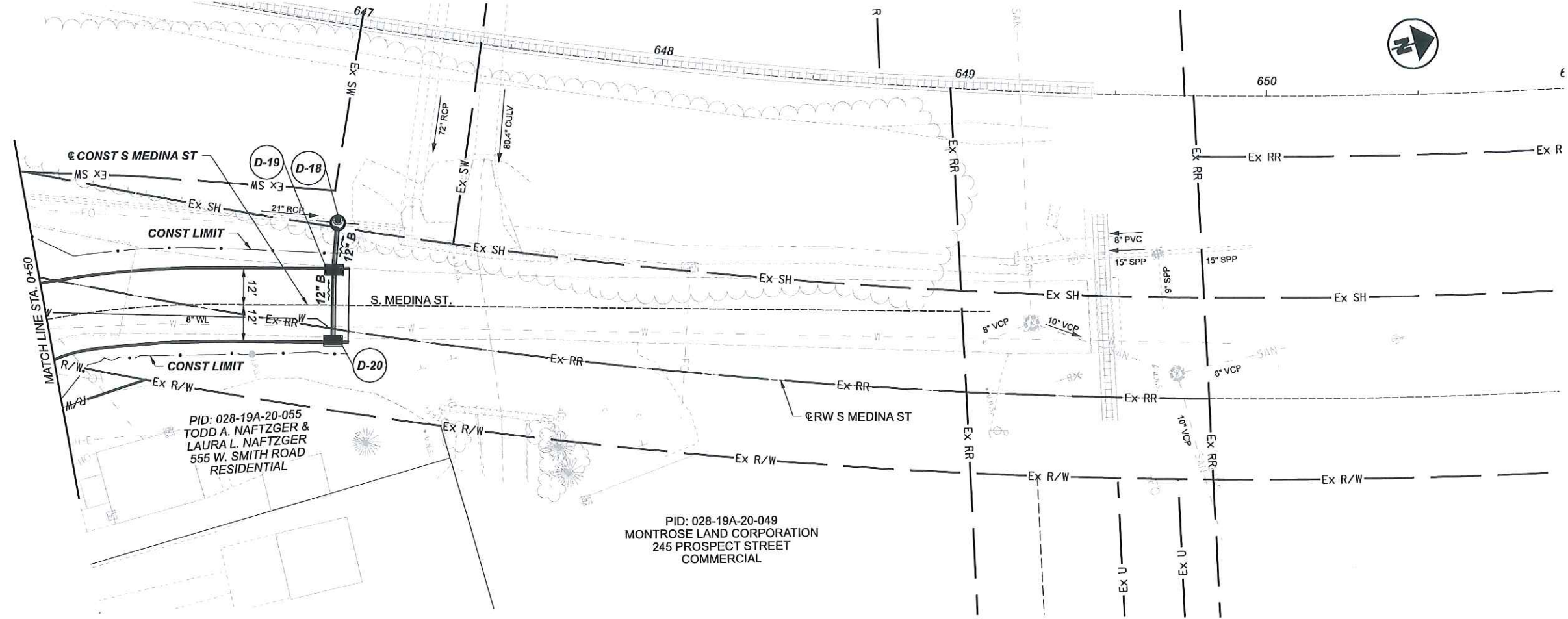
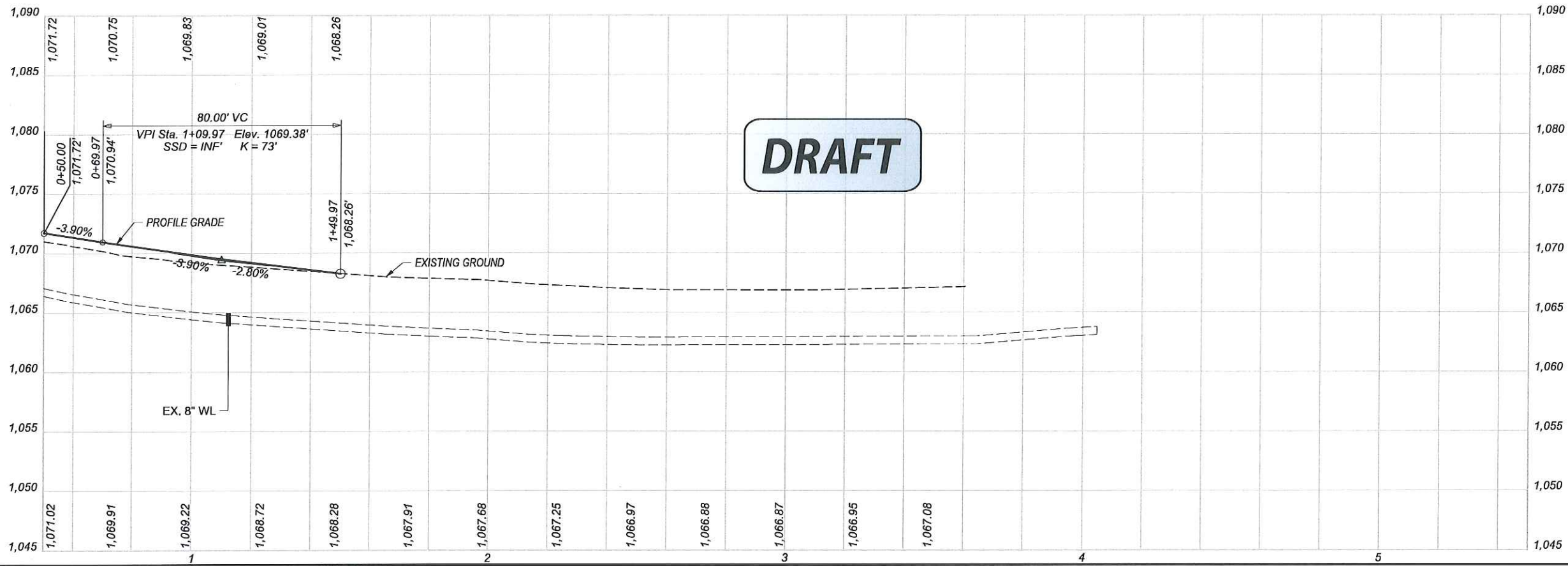


PLAN AND PROFILE - BAXTER ST
STA 0+00 TO STA 2+00

DESIGN AGENCY	
STRUCTUREPOINT INC.	
DESIGNER	XXX
REVIEWER	XXX
PROJECT ID	112540
SHEET	TOTAL
P.21	104

MED CR 0004 15.47 (W SMITH ROAD)

MODEL: I2540_CPOD_Sheet PAPER SIZE: 34x22 (in.) DATE: 1/5/2021 TIME: 3:33:33 PM USER: aaldaker
 C:\2019\01548\C.Design\I2540_Smith\400-Engineering\Roadway\Sheets\I2540_CPOD.dgn



DESIGN AGENCY	
AMERICAN STRUCTUREPOINT INC.	
DESIGNER	XXX
REVIEWER	XXX
DATE	12/07/20
PROJECT ID	112540
SHEET	TOTAL
P.22	104

**PLAN AND PROFILE - S MEDINA ST
 STA 0+50 TO STA 3+50**

