

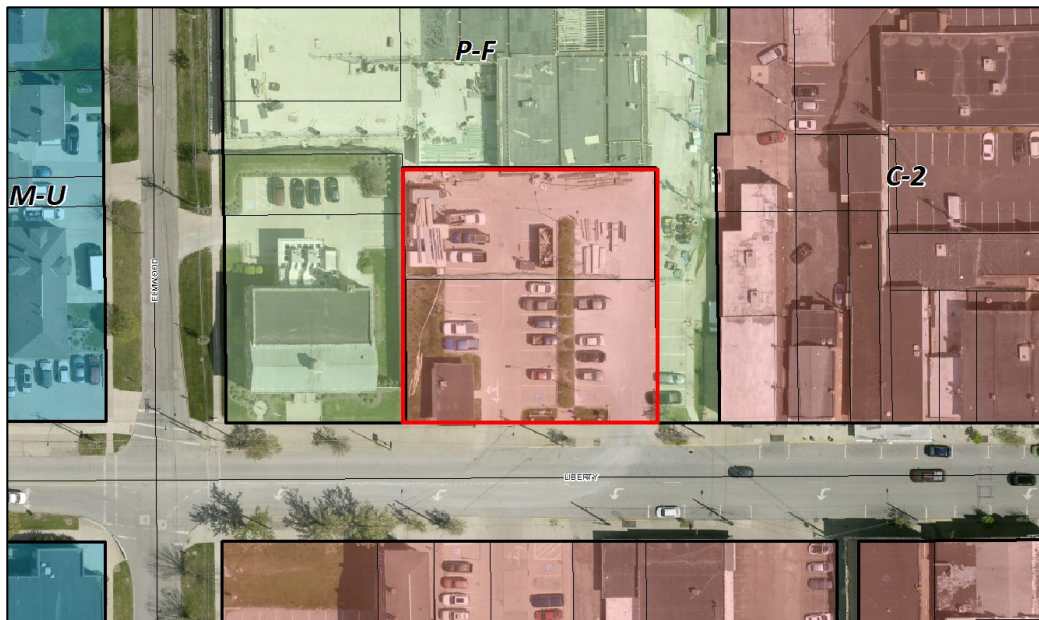
H21-05 Liberty View – Architectural Revisions

Property Owners: City of Medina and Medina City Development Corporation
Applicant: Anthony Cerny
Location: 135 West Liberty Street
Request: Certificate of Appropriateness revision for the construction of a four-story mixed use building

LOCATION AND SURROUNDING USES

The subject site is composed of 0.44 acres located on the north side of West Liberty Street. Adjacent properties contain the following uses:

- North – Parking Garage
- South – Retail & Multi-Family Residential
- East – Surface Parking/Restaurant
- West – Federal Building



BACKGROUND

In April of 2021, the Historic Preservation Board approved a Certificate of Appropriateness for the demolition of the Porters Shoe building and construction of a four-story mixed-use building. The approval has received two extensions, most recently in March of 2023. At the meeting, the Board again granted an extension of the approval requiring that permits must be obtained and construction must commence by April 8, 2024, or the Certificate of Appropriateness approval shall expire.

In March of 2023, the Porters Shoe building was demolished.

PROPOSED APPLICATION

The current application includes modifications to the previous approval regarding the south (front) and east (side) building elevations. The site layout and the north and west elevations are without notable changes. In addition, the entire building maintains the same materials and finishes.

Building “C” – The south building elevation was originally approved with bay windows on the second, third, and fourth floors. Revised plans replace bay windows on the second and third floors with windows matching adjacent windows on Building “D”. Revised plans also replace two bay windows on the fourth floor with a single large bay window.

Building “D” – The building was originally uniform for floors two, three, and four. Revised plans incorporate a patio on the fourth floor of the south side of the building. The modification is evident on both the south and east building elevations. In addition, a minor change to the east building elevation is proposed. Originally, plans showed two first floor windows and revised plans illustrate three first floor windows.

DESIGN GUIDELINES – MEDINA CODIFIED ORDINANCES SECTION 145.07(b)

(b) Additions/new construction. With respect to additions/new construction to existing buildings and all new buildings or structures within Historic Districts, it is generally the interest of the Board that such additions/new construction shall be designed to enhance the character of the Historic District. Consistent with the preface of this Chapter, new buildings and additions should be representative of architectural design and construction of contemporary times.

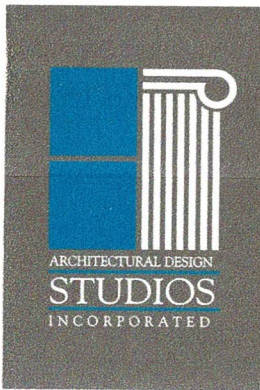
Additions to existing buildings in the Historic District should be designed so as not to detract from the original character of the building. Whenever possible, additions should be located away from the primary or street face of the building. The addition should be designed so as not to destroy existing architectural features, such that the addition can be removed and the building restored to its original condition.

New buildings in the Historic District shall be designed to be compatible with other structures in the Historic District while still reflecting work of contemporary times. Proximity of existing buildings to the new building will affect the latitude in design constraints. An infill design should be more consistent with adjoining buildings than a freestanding structure.

The “New Construction” Section of the City of Medina Design Guidelines for Historic Properties and Districts has also been attached to this report.

COMMUNITY DEVELOPMENT DEPARTMENT STAFF RECOMMENDATION

Staff recommends **approval** of application H21-05 for revisions to a four-story mixed use building. The proposed changes maintain the character of the building and provide additional visual interest.



Architecture
Preservation
Graphics
Planning
Interior Design

April 18, 2023

Historic Preservation Board
c/o, Andrew Dutton, Community Development Director
City of Medina
132 North Elmwood Street
Medina, Ohio 44256

Re: Liberty View
Certificate of Appropriateness
Amendment to Approval
Case No. H21-05

Dear Board Members,

The developers for the Liberty View project have made a modification to the 4th floor plan, creating a larger apartment in the southeast corner of the building. This change in plan results in a modification to the building facade on the southeast corner. We are requesting an amendment to the existing HPB approval for this project to address this modification.

This request does not include modifying or changing any of the exterior finish materials. These will all remain as originally approved. The primary reason for the change in the facade is the development of an exterior patio space in the southeast corner (Building "D" Facade) on the fourth floor. We have also modified the design of the bay window for Building "C" based upon the floor plan in this area.

To accomplish the modification on Building "D", the original cornice element is lowered down to the third floor. To account for the additional height required to form a guard around the patio space, a simple metal railing is added to the top of the parapet.

We believe this modification to the building facade does not alter the overall character of the building as originally approved and is consistent with the goals and requirements of the City of Medina's Design Guidelines for the Historic District. As with the original approval, the Liberty View project will enhance the overall character of the district, reinforcing the storefront fabric of the historic structures, building upon the stylistic character of the buildings, but utilizing contemporary materials and details.

We respectfully request HPB approval of this modification to the Liberty View development.

Respectfully Submitted,

Anthony J. Cerny
Architectural Design Studios, Inc.

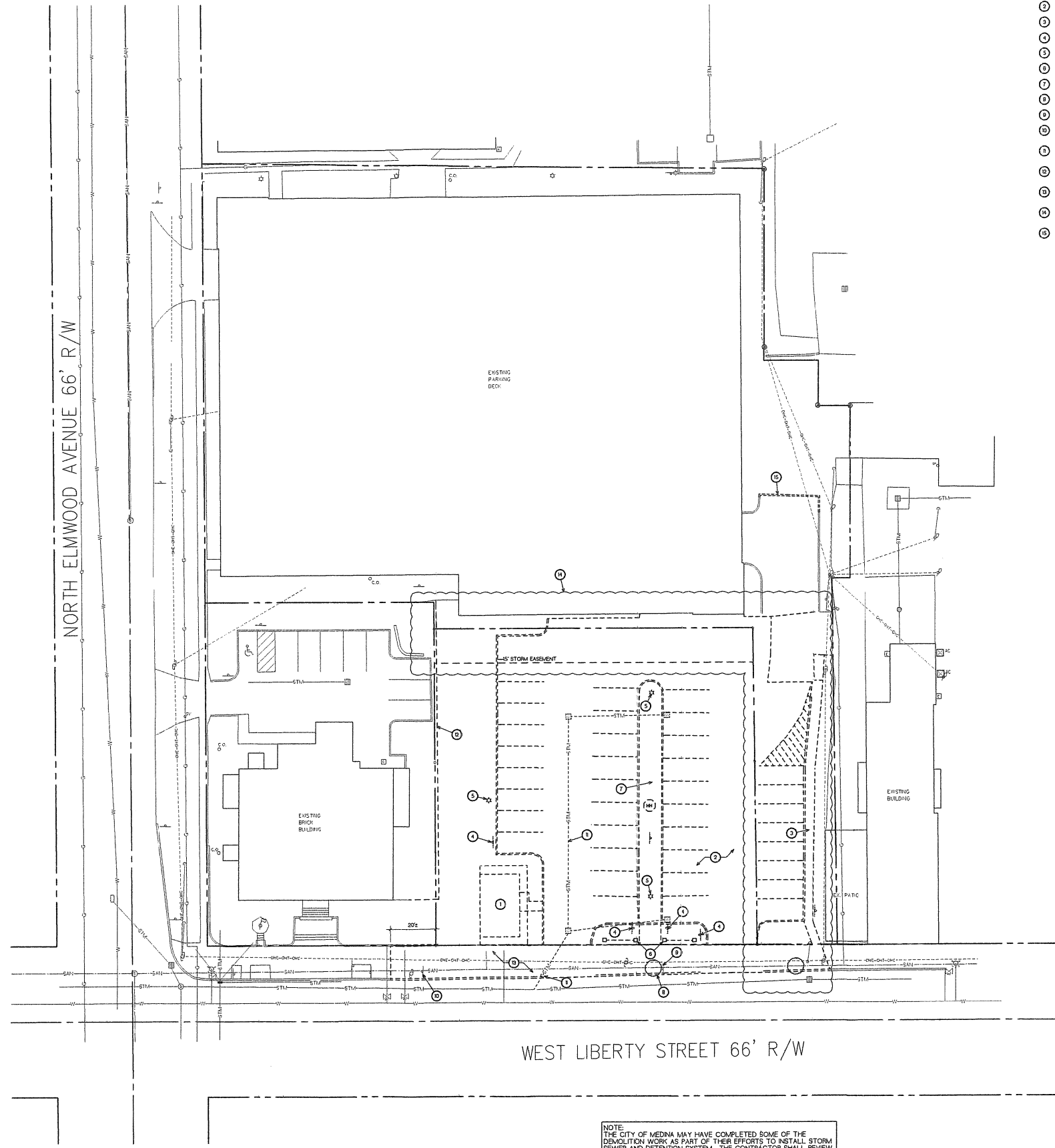
J:\0STUDIOS\0JOBS\18052_WP_Liberty View Apartments\Medina City\HPB\HPB_H21-05_Amendment to Approval_New Facade_230418a.wpd

620 East Smith Rd
Medina, Ohio
44256

330.723.6975
(phone)

330.723.7129
(fax)

Existing Site



- ### SITE DEMOLITION PLAN NOTES
- 1 REMOVE EXISTING CONCRETE BLOCK BUILDING
 - 2 REMOVE EXISTING CONCRETE PARKING LOT INCLUDING CONCRETE CURBS
 - 3 REMOVE EXISTING CONCRETE SIDEWALK
 - 4 EXISTING SIGNS TO BE REMOVED AND TURNED OVER TO THE CITY OF MEDINA
 - 5 EXISTING LIGHT POLES. COORDINATE WITH FIRST ENERGY TO HAVE POLES REMOVED
 - 6 REMOVE EXISTING BRICK FENCE AND METAL FENCE
 - 7 REMOVE EXISTING LANDSCAPE ISLAND AND PLANTINGS
 - 8 REMOVE EXISTING TREES
 - 9 REMOVE EXISTING TRAFFIC SIGN AND TURN OVER TO CITY OF MEDINA
 - 10 REMOVE EXISTING CITY MARKER/DIRECTIONAL SIGN AND STORE. TO BE REINSTALLED AT COMPLETION OF PROJECT
 - 11 REMOVE EXISTING STORM STRUCTURES AND SEWER LINES. REFER TO SWP'S PLAN TO COORDINATE WITH CONSTRUCTION. CAP STORM LINE AT EDGE OF ROAD.
 - 12 REMOVE EXISTING CEDAR PRIVACY FENCE. COORDINATE WITH CONSTRUCTION FENCE WITH PRIVACY SCREEN IN PLACE PRIOR TO REMOVAL OF CEDAR FENCE.
 - 13 REMOVE EXISTING SIDEWALK AT LIBERTY STREET. SIDEWALK TO REMAIN IN PLACE UNTIL FOUNDATIONS ARE IN PLACE.
 - 14 DEMOLITION WORK IN THIS AREA HAS BEEN COMPLETED AS PART OF THE CITY'S STORM WATER WORK.
 - 15 SAW CUT AND REMOVE EXISTING CONCRETE CURB FOR TRASH DUMPSTER. REFER TO SHEET SP-1.

NOTE:
THE CITY OF MEDINA MAY HAVE COMPLETED SOME OF THE DEMOLITION WORK AS PART OF THEIR EFFORTS TO INSTALL STORM SEWER AND DETENTION SYSTEM. THE CONTRACTOR SHALL REVIEW THE SITE TO DETERMINE FULL EXTENT OF DEMOLITION WORK.

1 SITE DEMOLITION PLAN
SCALE 1" = 20' - 0"

PLOTTED 10/18/2021

ARCHITECTURAL DESIGN STUDIOS INCORPORATED
Architecture
Preservation
Graphics
Planning
Interior Design
620 E. Smith Road
Medina, Ohio 44256
330.725.6787
COPYRIGHT 2021
All Rights Reserved

ROSE COMPANY
REAL ESTATE DEVELOPMENT & INVESTMENT
25 Public Square, Suite 200
3307256787 | www.RoseComp.com

ISSUED	
03/02/2021	ISSUED FOR PLANNING
04/09/2021	ISSUED FOR REVIEW & BUDGETING
10/07/2021	ISSUED TO MEDINA CITY FOR REVIEW

LIBERTY VIEW
135 WEST LIBERTY STREET
MEDINA, OHIO 44256

THESE DRAWINGS AND DESIGN ARE THE EXCLUSIVE PROPERTY OF ARCHITECTURAL DESIGN STUDIOS. THEY ARE INTENDED FOR CONSTRUCTION ONLY AT THE SITE INDICATED. UNAUTHORIZED REPRODUCTION OF THE DOCUMENTS/DESIGN IS PROHIBITED.

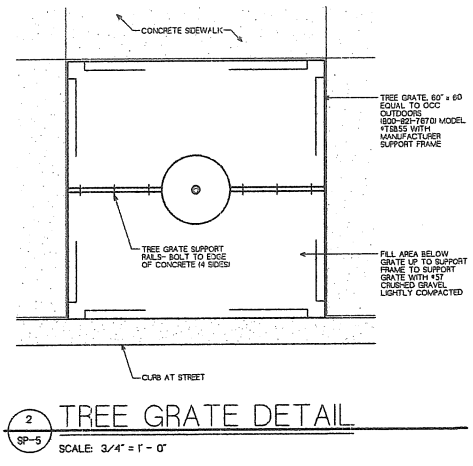
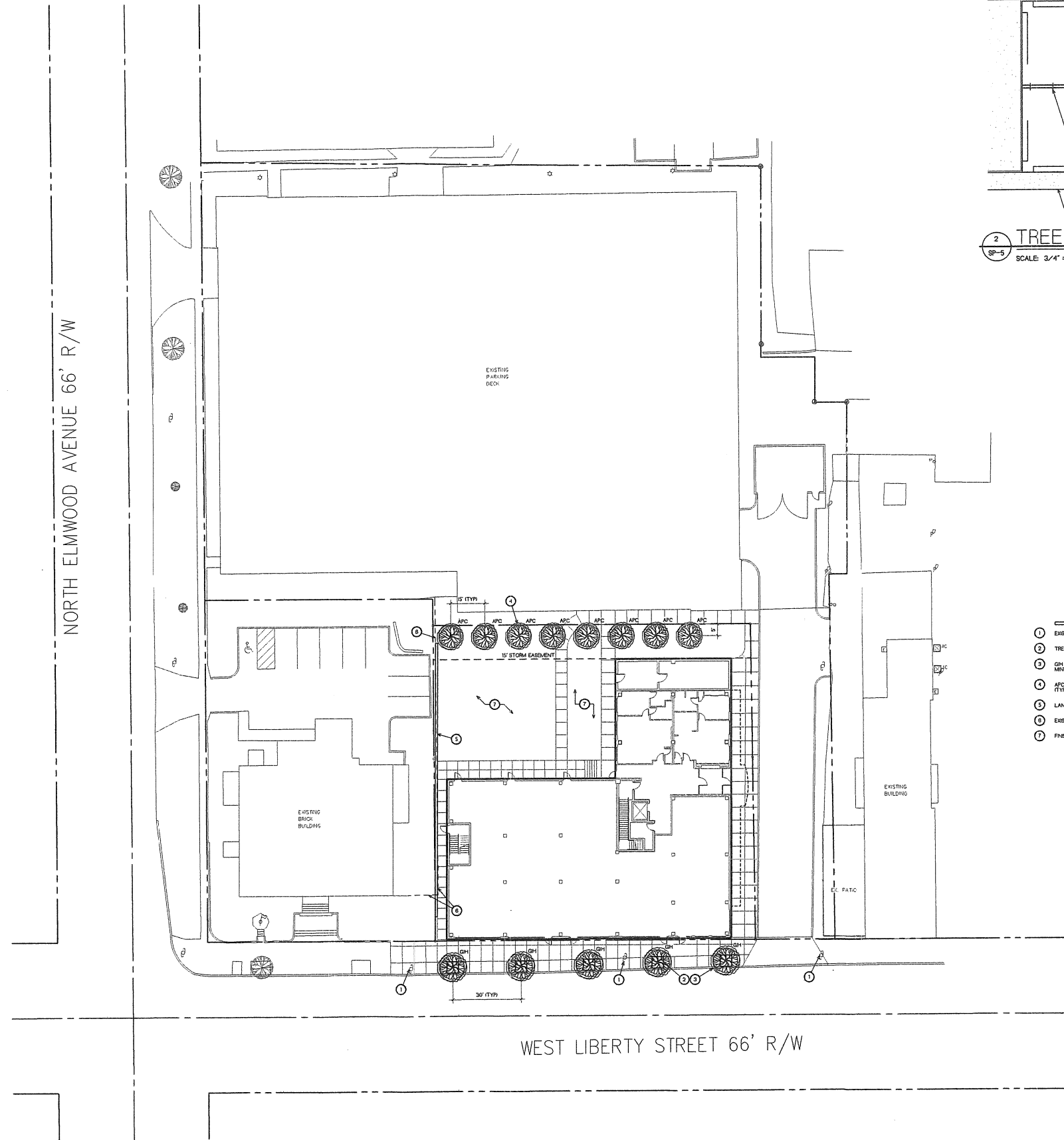
SEPTEMBER 2018
#18052

SP-2



A SCARLETT DRIVE WP MEDINA APARTMENTS SP2

Site Plan



- SITE LANDSCAPE PLAN NOTES**
- 1 EXISTING UTILITY POLES TO REMAIN.
 - 2 TREE GRATES ALONG SIDEWALK. REFER TO DETAIL THIS SHEET.
 - 3 GH - GLEDITSIA TRIANGULATOS VARIETY WEINER, IMPERIAL THORNLESS HONEYLOCUST, MINIMUM 2" CALIPER (TYPICAL AS NOTED).
 - 4 APC ACER PLATA MODES COLLANNADE, COLLANNA NORWAY MAPLE, MINIMUM 2" CALIPER (TYPICAL AS NOTED).
 - 5 LANDSCAPE RETAINING WALL. REFER TO GRADING PLAN.
 - 6 EXISTING PRIVACY FENCE TO BE REMOVED.
 - 7 FINISH GRADE AND SEED.

PLOTTED 10/18/2021

ARCHITECTURAL DESIGN STUDIOS INCORPORATED
 Architecture
 Preservation
 Graphics
 Planning
 Interior Design
 620 E. Smith Road
 Medina, Ohio 44256
 330-723-08975
 COPYRIGHT 2021
 All Rights Reserved

ROSE COMPANY
 REAL ESTATE DEVELOPMENT & INVESTMENT
 28 Public Square, Suite 200
 330723-6787 | www.rosecompany.com

ISSUED	
03/02/2021	ISSUED FOR PLANNING
04/05/2021	ISSUED FOR REVIEW & BUDGETING
10/07/2021	ISSUED TO MEDINA CITY FOR REVIEW
11/01/2021	
11/01/2021	
11/01/2021	
11/01/2021	
11/01/2021	
11/01/2021	

LIBERTY VIEW
 135 WEST LIBERTY STREET
 MEDINA, OHIO 44256

THESE DRAWINGS AND DESIGN ARE THE EXCLUSIVE PROPERTY OF ARCHITECTURAL DESIGN STUDIOS. THEY ARE INTENDED FOR CONSTRUCTION ONLY AT THE SITE INDICATED. UNAUTHORIZED REPRODUCTION OF THE DOCUMENTS/DESIGN IS PROHIBITED.

SEPTEMBER 2018 #18052

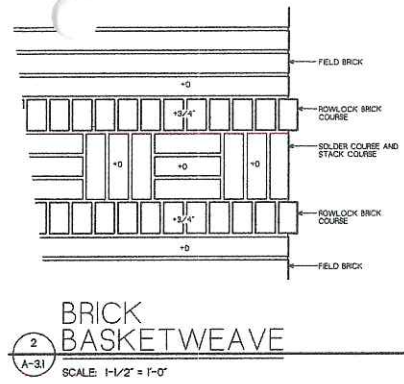
SP-5

SITE LANDSCAPE PLAN
 SCALE 1" = 20' - 0"
 NORTH

811
 Know what's below.
 Call before you dig.

P:\CADD\2021\18052\MEDINA\LIBERTYVIEW\SP5

South Elevation Initially Approved



Building "A"				
PRODUCT	MANUFACTURER	COLOR	MORTAR	NOTES
A	Split Face 8" x 16"	Rococast	Buffstone	
B	Buttrose 4"	Rococast	Buffstone	
C	Modular Brick	Belden	St. Anne Clear	
D	Modular Brick	Belden	St. Anne Blend 'A'	
E	EIFS	DRYVIT	#111 Prairie Clay	Limestone Finish
F	Window Frame & Trim	Andersen	Sandtone SW #9174 Moth Wing	
G	Cornice			Refer to Details Sheets FA-4.3 & A-4.4 for paint color
H	Sillstone 4"	Rococast	Buffstone	
J	Injection Molded Letters	Gemini	#0314 Old Copper	Stud Mounted
K	Fascia	Metal Era		
L	Aluminum Storefront Framing	Tubelite	Light Champagne	

NOTES:

Building "B"				
PRODUCT	MANUFACTURER	COLOR	MORTAR	NOTES
A	Modular Brick	Belden	Midland Blend 'A'	
B	Chamfered 5 5/8" #HD-2258	Rococast	Buffstone	
C	Modular Brick	Belden	Rosewood Clear 'A'	
D	Windows	Andersen	Canvas	
E	Window Trim & Head		SW # Birdseye Maple	
F	Cornice			Refer to Details Sheet A-4.5 for paint color
G	Awning	Sunbrella	Eastland Redwood	
H	Sillstone 4"	Rococast	Buffstone	
J	Injection Molded Letters	Gemini		Stud mounted
K	Fascia	Metal Era		
L	Aluminum Storefront Framing	Tubelite	Medium Bronze	

NOTES:

Building "C"				
PRODUCT	MANUFACTURER	COLOR	MORTAR	NOTES
A	Modular Brick	Belden	Meadow Blend 'A'	
B	Modular Brick	Belden	Brandywine Velour 'A'	
C	Roof - Copper Standing Seam			
D	Window		Sandtone	
E	Window Trim & Panel		SW #2819 Downing Slate SW #2637 Aurora Brown SW #2618 Ranwick Heather	
F	Cornice			Refer to Sheet A-4.6 for paint color
G	Awning	Sunbrella	Mediterranean Tweed	
H	Not Used			
J	Injection Molded Letters	Gemini		Stud mounted
K	Fascia	Metal Era		
L	Aluminum Storefront Framing	Tubelite	Dark Bronze	

NOTES:

Building "D"				
PRODUCT	MANUFACTURER	COLOR	MORTAR	NOTES
A	Modular Brick	Belden	Kingsport Dart	
B	Modular Brick	Belden	Brandywine Velour 'A'	
C	EIFS	DRYVIT	#111 Prairie Clay	Sandstone Finish
D	Window	Andersen	Sandtone	
E	Window Trim	Andersen	SW #7829 Grassy	
F	EIFS Cornice			Refer to details on Sheet A-4.7
G	Awning	Sunbrella	Eastridge Cocoa	
H	Medallions 12"x 12"	Pineapple Grove	Oak Leaf - Brownstone	
J	Injection Molded Letters	Gemini		Stud mounted
K	Fascia	Metal Era		
L	Aluminum Storefront Framing	Tubelite	Light Champagne	

NOTES:

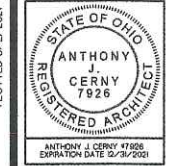


ELEVATION NOTES

1 XXXXX

2 XXXXX

1 SOUTH ELEVATION
A-31
SCALE: 3/16" = 1'-0"



Architecture
Preservation
Graphics
Planning
Interior Design

920 E. Smith Road
Medina, Ohio 44256
330.0723.0975

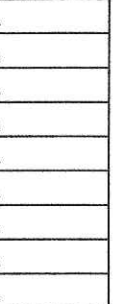
copyright 2021
All Rights Reserved

ROSE COMPANY
REAL ESTATE DEVELOPMENT INVESTMENT

79 Public Square, Suite 200
Medina, Ohio 44256
330.725.6787 | www.roseflorissant.com

ISSUED

09/02/2021
ISSUED FOR
PLANNING



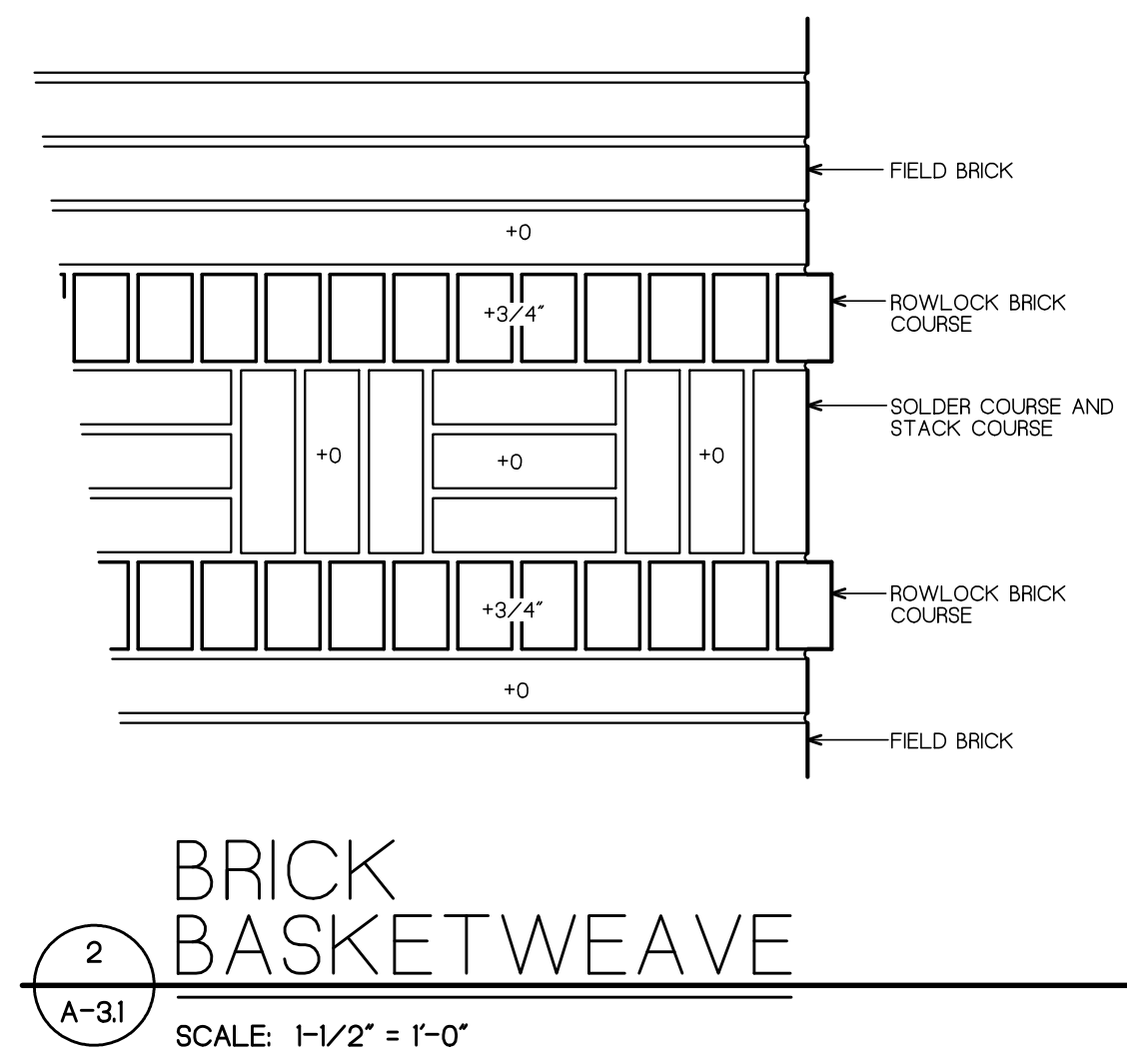
LIBERTY VIEW
135 WEST LIBERTY STREET
MEDINA, OHIO 44256

THESE DRAWINGS AND DESIGN ARE THE EXCLUSIVE PROPERTY OF ARCHITECTURAL DESIGN STUDIOS. THEY ARE INTENDED FOR CONSTRUCTION ONLY AT THE SITE INDICATED. UNAUTHORIZED REPRODUCTION OF THE DOCUMENTS/DESIGN IS PROHIBITED.

SEPTEMBER 2018
18052

A-3.1

South Elevation Proposed



Building "A"				
	PRODUCT	MANUFACTURER	COLOR	NOTES
A	Split Face 8" x 16"	Rockcast	Buffstone	Mortar - Limestone #58H
B	Bullnose 4"	Rockcast	Buffstone	Mortar - Limestone #58H
C	Modular Brick	Belden	St. Anne Blend 'A'	Mortar - Limestone #58H
D	Modular Brick	Belden	St. Anne Blend 'A'	Mortar - Limestone #58H
E	EIFS	DRYVIT	#105 Suede	Limestone Finish
F	Window Frame & Trim	Andersen	Sandtone SW #9174 Moth Wing	
G	Cornice			Refer to Details Sheets FA-4.3 & A-4.4 for paint color
H	Sillstone 4"	Rockcast	Buffstone	
J	Injection Molded Letters	Gemini	#0314 Old Copper	Stud Mounted
K	Fascia	Metal Era	Medium Bronze	
L	Aluminum Storefront Framing	Tubelite	Light Champagne	

NOTES:

Building "C"				
	PRODUCT	MANUFACTURER	COLOR	NOTES
A	Modular Brick	Belden	Meadow Blend 'A'	
B	Modular Brick	Belden	Brandywine Velour 'A'	
C	Roof - Copper Standing Seam			
D	Window	Andersen	Sandtone	
E	Window Trim & Panel		SW #9149 Inky Blue SW #2837 Aurora Brown SW #7045 Intellectual Gray	
F	Cornice			Refer to Sheet A-4.6 for paint color
G	Awning	Sunbrella	Mediterranean Tweed	
H	EIFS	Dryvit	#105 Suede	Limestone Finish
J	Injection Molded Letters	Gemini	Old Copper	Stud mounted
K	Fascia	Metal Era	Slate Blue	
L	Aluminum Storefront Framing	Tubelite	Dark Bronze	

NOTES:

Building "B"				
	PRODUCT	MANUFACTURER	COLOR	NOTES
A	Modular Brick	Belden	Midland Blend 'A'	Mortar - Hearstone #51H
B	Chamfered 5 5/8" #HD-2258	Rockcast	Buffstone	Mortar - Limestone #58H
C	Modular Brick	Belden	Rosewood Clear 'A'	Mortar - Hearstone #51H
D	Windows	Andersen	Canvas	
E	Window Trim & Head		SW #2834 Birdseye Maple	
F	Cornice			Refer to Details Sheet A-4.5 for paint color
G	Awning	Sunbrella	Eastland Redwood	
H	Sillstone 4"	Rockcast	Buffstone	
J	Injection Molded Letters	Gemini	Metallic Gold	Stud mounted
K	Fascia	Metal Era	Sierra Tan	
L	Aluminum Storefront Framing	Tubelite	Medium Bronze	

NOTES:

Building "D"				
	PRODUCT	MANUFACTURER	COLOR	NOTES
A	Modular Brick	Belden	Kingsport-Dart Buckingham	Discontinued
B	Modular Brick	Belden	Brandywine Velour 'A'	
C	EIFS	DRYVIT	#111 Prairie Clay	Sandblast Finish
D	Window	Andersen	Sandtone	
E	Window Trim		SW #2818 Renwick Heather	
F	Window Trim		Light Champagne	.060 aluminum brake metal to match storefront framing
G	Awning	Sunbrella	Eastridge Cocoa	
H	Medallions 12"x 12"	Pineapple Grove	Oak Leaf - Brownstone	
J	Injection Molded Letters	Gemini	Metallic Gold	Stud mounted
K	Fascia	Metal Era	Sierra Tan	
L	Aluminum Storefront Framing	Tubelite	Light Champagne	

NOTES:



1 SOUTH ELEVATION
SCALE: 3/16" = 1'-0"

PLOTTED 4/18/2023

ARCHITECTURAL DESIGN STUDIOS INCORPORATED

Architecture
Preservation
Graphics
Planning
Interior Design

620 E. Smith Road
Medina, Ohio 44256
330 723 6975

© COPYRIGHT 2021
All Rights Reserved

ROSE COMPANY
REAL ESTATE DEVELOPMENT INVESTMENT

4015 Medina Road, Suite 200
Medina, Ohio 44256
330.723.6971 | www.RosePlanes.com

ISSUED

03/02/2021	ISSUED FOR PLANNING
04/09/2021	ISSUED FOR REVIEW & BUDGETING

LIBERTY VIEW

135 WEST LIBERTY STREET
MEDINA, OHIO 44256

THESE DRAWINGS AND DESIGN ARE THE EXCLUSIVE PROPERTY OF ARCHITECTURAL DESIGN STUDIOS. THEY ARE INTENDED FOR CONSTRUCTION ONLY AT THE SITE INDICATED. UNAUTHORIZED REPRODUCTION OF THE DOCUMENTS/DESIGN IS PROHIBITED.

SEPTEMBER 2018 #18052

A-3.1

I:\DCB\DWG\W\18052\MEDINA APARTMENTS.VBI

East Elevation Initially Approved

Building "E"				
PRODUCT	MANUFACTURER	COLOR	MORTAR	NOTES
A	Spl. Face 8" x 16"	Schory	Chalk	
B	Modular Brick	Belden	Rosewood Clear A	
C	Modular Brick	Belden	Rosewood Clear A	
D		Andersen		
E	Window Trim & Head		S/W #2850 Sage	
F	Cornice		Refer to Details this Sheet for Cornice Paint Colors	
G	EIPS	DRYVIT		
H	Not Used			
J	Injection Molded Letters	Gemini	#0314 Old Copper	
K	Fascia	Meal Era		Stud Mounted
L	Aluminum Storefront Framing	Tubeite	Medium Bronze	

NOTES:

PLOTTED 9/2/2021

ANTHONY J. CERNY
REGISTERED ARCHITECT
NO. 7826
EXPIRATION DATE 12/31/2021

ARCHITECTURAL DESIGN STUDIOS

Architecture
Preservation
Graphics
Planning
Interior Design

620 E. Smith Road
Medina, Ohio 44256
330.723.0875

COPYRIGHT 2021
All Rights Reserved

ROSE COMPANY
REAL ESTATE DEVELOPMENT / INVESTMENT

724 Maple Street, Suite 200
Medina, Ohio 44256
330.725.0767 | www.RosePhases.com

ISSUED

1	09/02/2021 ISSUED FOR PLANNING
2	
3	
4	
5	
6	
7	
8	
9	
10	

LIBERTY VIEW

135 WEST LIBERTY STREET
MEDINA, OHIO 44256

THESE DRAWINGS AND DESIGN ARE THE EXCLUSIVE PROPERTY OF ARCHITECTURAL DESIGN STUDIOS. THEY ARE INTENDED FOR CONSTRUCTION ONLY AT THE SITE INDICATED. UNAUTHORIZED REPRODUCTION OF THE DOCUMENTS/DESIGN IS PROHIBITED.

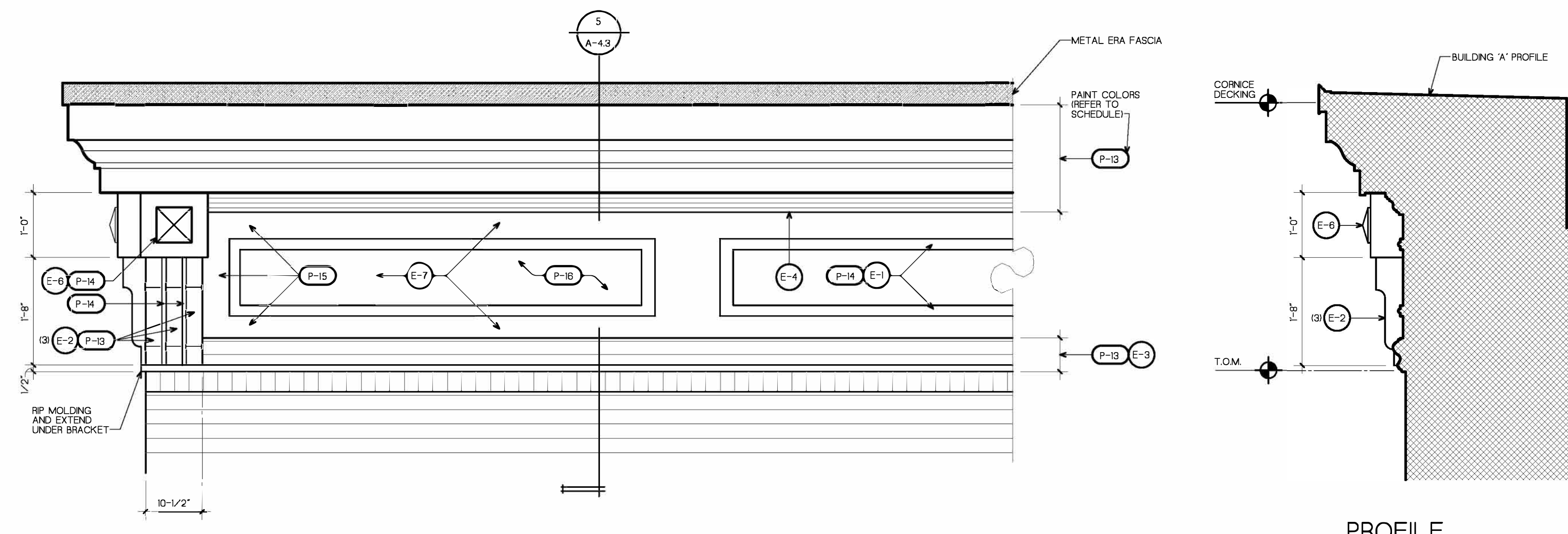
SEPTEMBER 2018
#18052

A-3.2



EAST ELEVATION
SCALE: 3/16" = 1' - 0"

L:\30485\DWG\30485\30485_001.dwg



**GENERAL NOTES
BUILDING 'E'**

- E-1 FYPON MOULDING MLD68
- E-2 FYPON BRACKET BKT5X20 GABLE (3" WITH 1/2" 3/4" PVC SPACERS BETWEEN
- E-3 FYPON MOULDING MLD639 SURROUND
- E-4 FYPON MOULDING MLD240 CORNICE
- E-5 FYPON MOULDING MLD371 CROWN FASCIA
- E-6 FYPON MOULDING PST7X7P
- E-7 1" FYPON PANEL

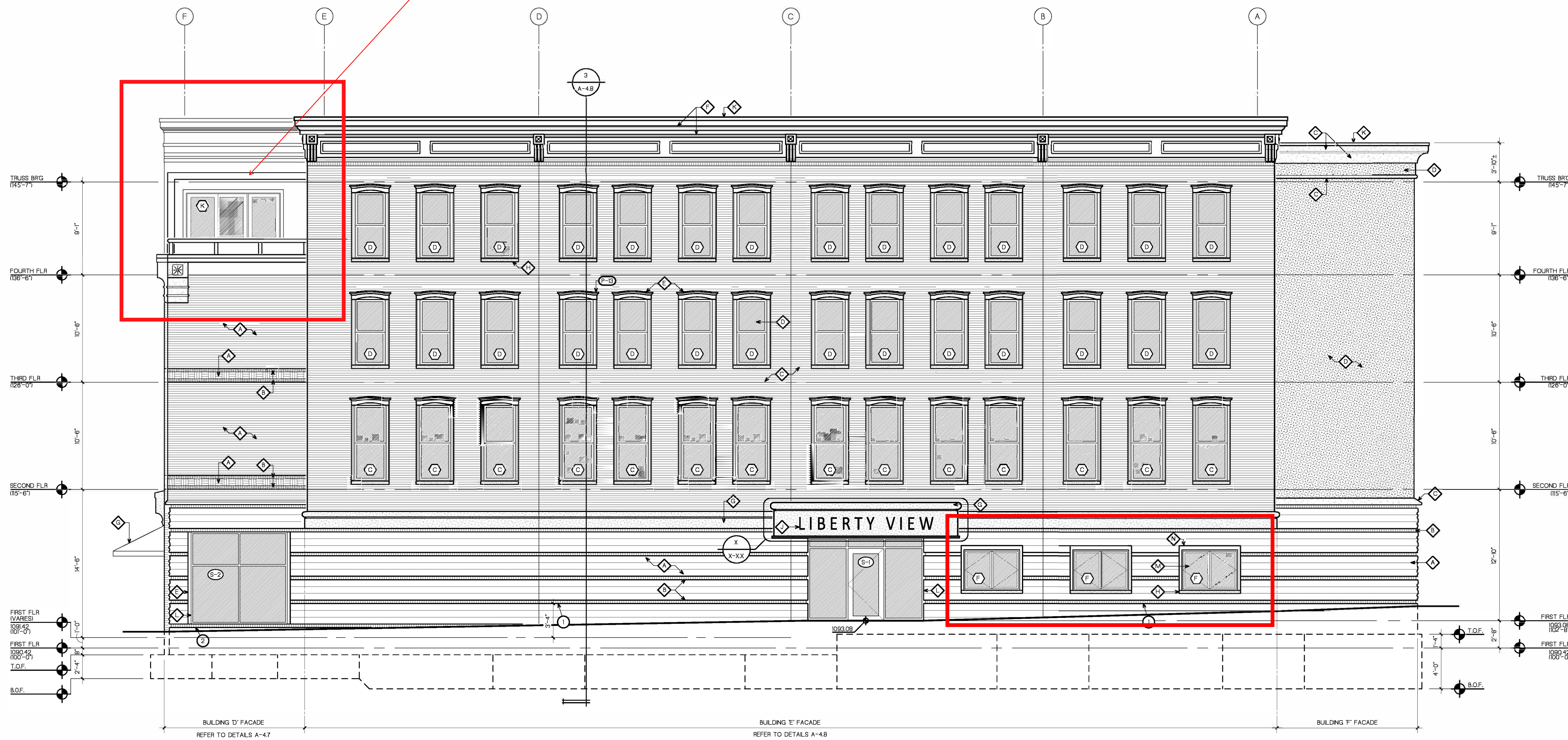
Building "E"			
PRODUCT	MANUFACTURER	COLOR	NOTES
A Split Face 8" x 16"	Schory	Chalk	
B Modular Brick	Belden	Rosewood Clear A	
C Modular Brick	Belden	Rosewood Clear A	
D Windows	Andersen	Canvas	
E Window Trim & Head		SW #2860 Sage	
F Cornice		Refer to Details this Sheet for Cornice Paint Colors	
G EIFS	DRYVIT	#105 Suede	Limestone
H Silstone (4")	Rockcast	Buffstone	
J Injection Molded Letters	Gemini	#0314 Old Copper	
K Fascia	Metal Era	Medium Bronze	Stud Mounted
L Aluminum Storefront Framing	Tubelite	Medium Bronze	
M Window	Andersen	Terratone	
N Window Trim	Andersen	Terratone	

NOTES:

2 CORNICE ELEVATION BUILDING 'E'
SCALE: 3/4" = 1' - 0"

East Elevation Proposed

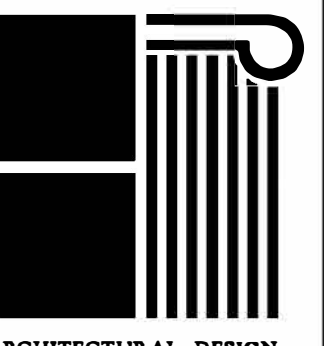
Revised to create patio space for apartment on 4th floor



- ELEVATION NOTES**
- TOP OF CMJ AT 3'-4" ABOVE FINISH FLOOR 101'-01". STEEL STUDS AND MASONRY VENEER ABOVE. REFER TO SECTION 3/A-48.
 - STEP DOWN TOP OF CMJ AT 1'-0" ABOVE FINISH FLOOR 101'-01" AT WINDOW. REFER TO WINDOW SILL DETAILS.

1 EAST ELEVATION
SCALE: 3/16" = 1' - 0"

PLOTTED 4/18/2023



**ARCHITECTURAL DESIGN
STUDIOS
INCORPORATED**

Architecture
Preservation
Graphics
Planning
Interior Design

620 E. Smith Road
Medina, Ohio 44256
330 □ 723 □ 6975
COPYRIGHT 2021
All Rights Reserved

ISSUED

03/02/2021	ISSUED FOR PLANNING
04/08/2021	ISSUED FOR REVIEW & BUDGETING
A	
A	
A	
A	
A	
A	
A	
A	

LIBERTY VIEW
135 WEST LIBERTY STREET
MEDINA, OHIO 44256

THESE DRAWINGS AND DESIGN ARE THE EXCLUSIVE PROPERTY OF ARCHITECTURAL DESIGN STUDIOS. THEY ARE INTENDED FOR CONSTRUCTION ONLY AT THE SITE INDICATED. UNAUTHORIZED REPRODUCTION OF THE DOCUMENTS/DESIGN IS PROHIBITED.

SEPTEMBER 2018
#18052

A-3.2

North Elevation Initially Approved No Significant Changes

Building "F"				
PRODUCT	MANUFACTURER	COLOR	MORTAR	NOTES
A	Solid Face 8" x 16"	Schory	Chalk	
B	Modular Brick	Bergen	Rosewood Clear A'	
C	EIFS	DRYVIT	#1C4 Dover Sky	Sandblast Finish
D	EIFS	DRYVIT	#305 Plum	Quartzite Finish
E	EIFS	DRYVIT	#525 Fern Ridge	Quartzite Finish
F	Not Used			
G	Paint	Shawin Williams	Paint N.M. Doors SW 27946 Prairie Grass	
H	Window	Andersen	Sanitone	
J	Window	Andersen	Dark Bronze	
K	Fascia	Metal Era		
L	Aluminum Storefront Framing	Tubelite	Medium Bronze	

NOTES:



1 NORTH ELEVATION
A-3.3
SCALE 3/16" = 1'-0"

PLOTTED 02/27/2021

ANTHONY J. CERNY 77029
EXPIRATION DATE 07/31/2021

ARCHITECTURAL DESIGN
STUDIOS
INCORPORATED

Architecture
Preservation
Graphics
Planning
Interior Design

830 E. Smith Road
Medina, Ohio 44256
330.6723.08975

© 2018 A.D.S. All Rights Reserved

ROSE COMPANY
REAL ESTATE DEVELOPMENT & INVESTMENT

23 South Square, Suite 2100
Medina, Ohio 44256
330.725.8167 | www.rosecompany.com

ISSUED

03/02/2021
ISSUED FOR
PLANNING

LIBERTY VIEW

135 WEST LIBERTY STREET
MEDINA, OHIO 44256

THESE DRAWINGS AND DESIGN ARE
THE EXCLUSIVE PROPERTY OF
ARCHITECTURAL DESIGN STUDIOS.
THEY ARE INTENDED FOR
CONSTRUCTION ONLY AT THE
SITE INDICATED.
UNAUTHORIZED REPRODUCTION OF
THESE DRAWINGS/DESIGN IS
PROHIBITED.

SEPTEMBER 2018
48052

A-3.3

West Elevation Initially Approved No Significant Changes



WEST ELEVATION
SCALE 3/16" = 1'-0"

STATE OF OHIO
ANTHONY J. CERNY
7926
REGISTERED ARCHITECT
ANTHONY J. CERNY #1805
EXPIRATION DATE 12/31/2021

ARCHITECTURAL DESIGN
STUDIOS
INCORPORATED
Architecture
Preservation
Graphics
Planning
Interior Design
820 E. Smith Road
Medina, Ohio 44256
330.725.0787

ROSE COMPANY
REAL ESTATE DEVELOPMENT & INVESTMENT
23 Public Square, Suite 200
Medina, Ohio 44256
330.725.0787 | www.roseoffices.com

ISSUED
03/02/2028 ISSUED FOR PLANNING
1
2
3
4
5
6
7
8
9

LIBERTY VIEW
135 WEST LIBERTY STREET
MEDINA, OHIO 44256

THESE DRAWINGS AND DESIGN ARE
THE EXCLUSIVE PROPERTY OF
ARCHITECTURAL DESIGN STUDIOS
THEY ARE INTENDED FOR
CONSTRUCTION ONLY AT THE
SITE INDICATED
UNAUTHORIZED REPRODUCTION OF
THE DOCUMENTS/DESIGN IS
PROHIBITED

SEPTEMBER 2018
18052
A-3.4

Early Concept



Liberty View



Architecture
Preservation
Graphics
Planning
Interior Design

ROSE COMPANY

REAL ESTATE DEVELOPMENT | INVESTMENT