

MEETING DATE: 04/8/21

**HISTORIC PRESERVATION
BOARD**

**Case No. H21-04
281 S. Court St.**



CITY of MEDINA
Historic Preservation Board
April 8, 2021


Case No: H21-04, continued from March 11, 2021

Address: 281 S. Court St.

Applicant: Craig Sturgill, Owner

Subject: Certificate of Appropriateness – Façade rehabilitation

Zoning: C-2, Central Business District

Submitted by: Jonathan Mendel, Community Development Director 

Background:

At the March 11, 2021 Historic Preservation Board meeting, the applicant requested a series of changes to the subject building's exterior facades in an effort to rehabilitate and repair many deferred maintenance and failing material issues.

The Historic Preservation Board and the applicant discussed the proposed changes and the Historic Preservation Board approved almost all the applicant's requested and/or negotiated changes, except for the replacement front door on east façade. The applicant was directed to return to the April 8, 2021 meeting with a revised replacement door system design that is more consistent with the design of the existing front door system being replaced.

Project Description:

The applicant has provided additional door system designs for review in order to be consistent with the discussion from the March 11, 2021 meeting.

Attached to this report:

1. March 16, 2021 email from Craig Sturgill (applicant) with various additional front door system options for review.

Jonathan Mendel

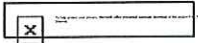
From: Craig Sturgill <craig@truridge.com>
Sent: Tuesday, March 16, 2021 3:18 PM
To: Jonathan Mendel
Cc: Sandy Davis
Subject: Re: Case #H21-04, 281 S. Court St.
Attachments: Front Door Options.pdf

Hi Jonathan,

Thank you for confirming the doors are the only "open" item needing final approval on for the restoration project. Attached to this email are the door options I would like to present to the board. The first page shows the original proposed door, and pages 2-4 show alternate versions I was able to come up with to meet the board's request of an oval-shaped window design. I like the door version "140 Style" shown on page 4 of the attachment with top window arch only, but want to remain somewhat flexible to appease the board, which is why I have all options attached with oval-style windows designs.

Do you need anything else from me (application, fees, etc.) for the follow-up meeting, or since it is simply coming back with a proposed solution to their concern, is the attachment all you need for now?

Craig Sturgill
(330) 408-3366
TruRidge.com



On Tue, Mar 16, 2021 at 3:05 PM Jonathan Mendel <jmendel@medinaoh.org> wrote:

Craig,

You are correct.

You only need to return with the modified front door assembly design, not the front bay 2 color painting scheme.

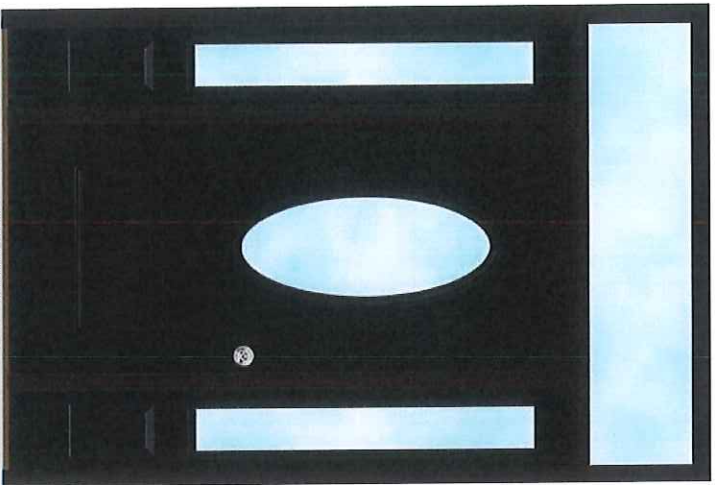
Thanks,

Jonathan Mendel, AICP

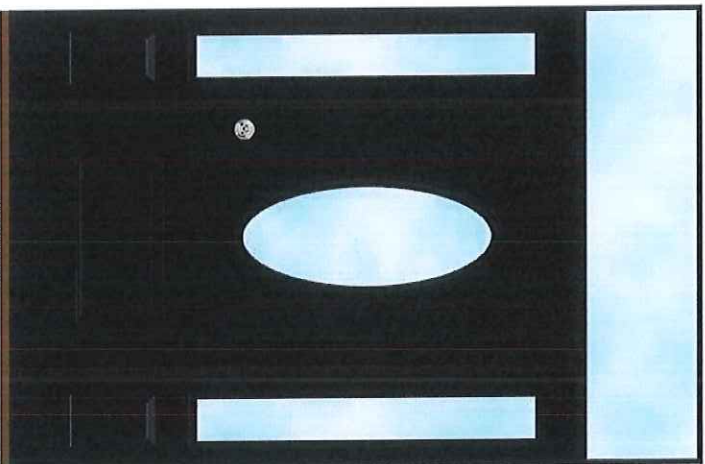
Community Development Director

YOUR PROFESSIONAL-CLASS PRODUCT

Legacy 20-Gauge Smooth Steel Entry Door with Clear Glass

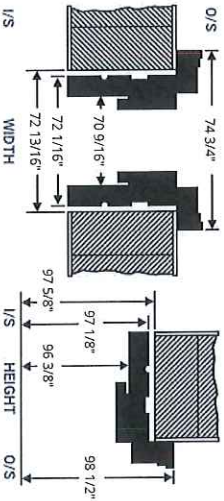


OUTSIDE VIEW



INSIDE VIEW

SIZING



HANDING



ENERGY

ENERGY PERFORMANCE RATINGS	
U-Factor (U5/Hp)	Solar Heat Gain Coefficient
0.28	0.16
ADDITIONAL PERFORMANCE RATINGS	
Visible Transmittance	-
0.17	-



877.389.0835
2150 State Route 39
SugarCreek, OH 44681

QUOTE INFORMATION

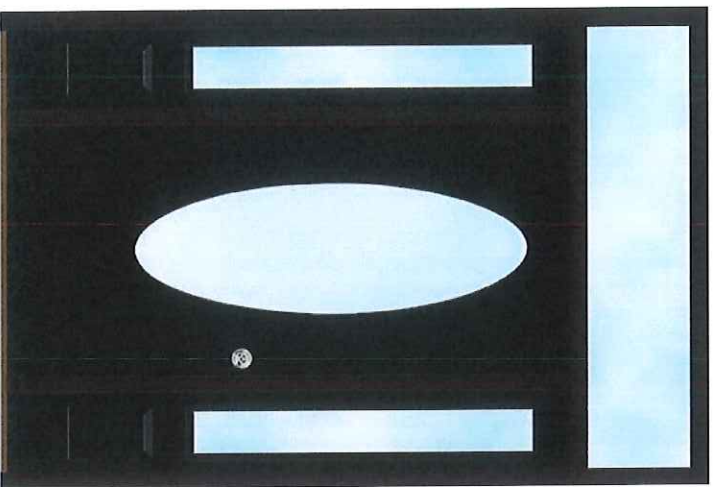
Job: Truridge South Court
Order #5863546-12

DETAILS

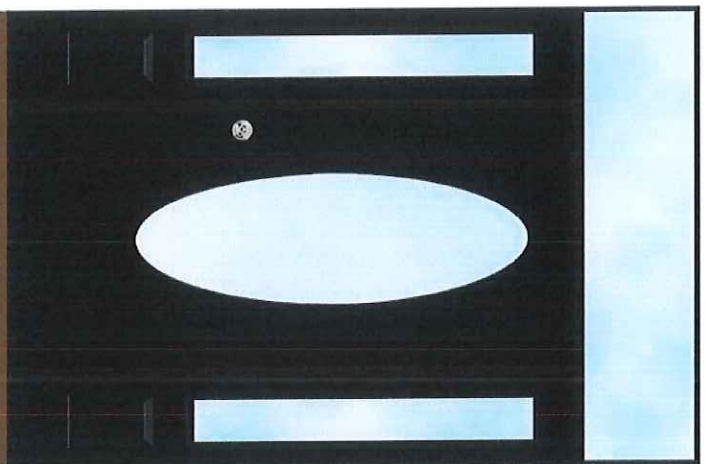
- Legacy Single Entry Door in Framesaver Frame
 - 36" x 80" Nominal Size
 - 16" Sidelite Width
 - Unit Size: 72 1/16" x 97 1/8"
 - Frame Depth: 6 9/16"
 - Inside Mullions: Match Outer Frame Depth
 - 2" Standard Brickmold
 - Left Hand Inswing - Inside Looking Out
 - Entry Door
 - 1 Panel 150 Style 20-Gauge Smooth Steel Door
 - With High-Definition Embossing
 - Comfortech DC
 - Coal Black Inside and Outside
 - Sidelites on Both Sides
 - 1 Panel 140 Style 24-Gauge Smooth Steel Sidelite
 - Comfortech DC
 - Coal Black Inside and Outside
 - Rectangular Transom
 - Custom Transom Size: 72 1/16" x 15 7/16"
 - Comfortech DC
 - Hardware
 - Satin Nickel Georgian Lockset
 - Frame
 - Textured Coal Black Aluminum Frame Cladding
 - Coal Black Inside Frame
 - Framesaver Inside Mull Cover - Coal Black
 - Mull Finish ZAC Auto-Adjusting Threshold (7 5/8" Depth)
 - Satin Nickel Ball Bearing Hinges
- INFORMATION AND WARNINGS**
A special order slab has been automatically selected. Additional lead time and charges will apply.
Custom size rectangular transoms require 2 weeks additional lead time (4 weeks total).

YOUR PROFESSIONAL-CLASS PRODUCT

Legacy 20-Gauge Smooth Steel Entry Door with Clear Glass

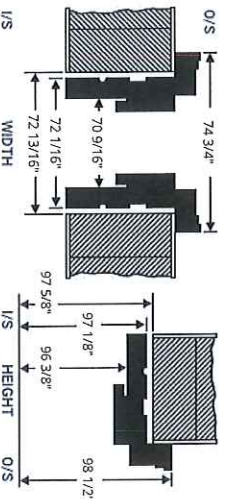


OUTSIDE VIEW



INSIDE VIEW

SIZING



HANDING



ENERGY

ENERGY PERFORMANCE RATINGS	
U-Factor (U5/HP)	Solar Heat Gain Coefficient
0.28	0.16
ADDITIONAL PERFORMANCE RATINGS	
Visible Transmittance	-
0.17	-



877-389-0835
2150 State Route 39
Sugar Creek, OH 44681

QUOTE INFORMATION

Job: Truridge South Court
Order #5863546-16

DETAILS

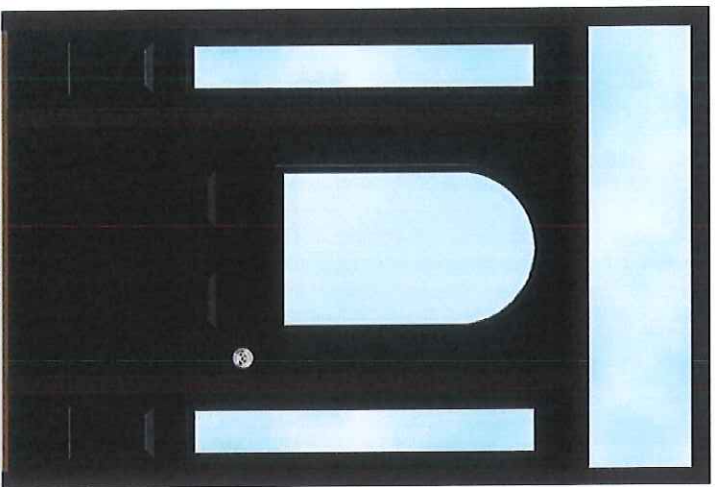
- Legacy Single Entry Door in Framesaver Frame
- 36" x 80" Nominal Size
- 16" Sidelite Width
- Unit Size: 72 1/16" x 97 1/8"
- Frame Depth: 5 9/16"
- Inside Mullions: Match Outer Frame Depth
- 2" Standard Brickmold
- Left Hand Inswing - Inside Looking Out
- Entry Door
- 350 Style 20-Gauge Smooth Steel Door
- Comfortech DC
- Coal Black Inside and Outside
- Sidelites on Both Sides
- 1 Panel 140 Style 24-gauge Smooth Steel Sidelite
- Comfortech DC
- Coal Black Inside and Outside
- Rectangular Transom
- Custom Transom Size: 72 1/16" x 15 7/16"
- Comfortech DC
- Hardware
- Satin Nickel Georgian Lockset
- Frame
- Textured Coal Black Aluminum Frame Cladding
- Coal Black Inside Frame
- Framesaver Inside Mull Cover - Coal Black
- Mill Finish ZAC Auto-adjusting Threshold (7 5/8" Depth)
- Satin Nickel Ball Bearing Hinges

INFORMATION AND WARNINGS

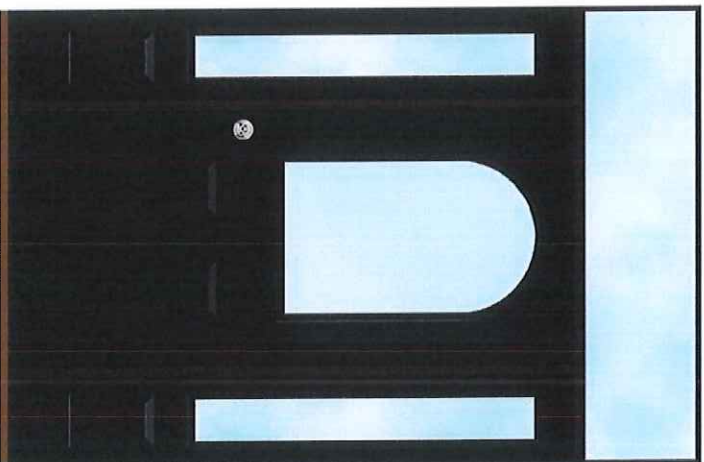
A special order slab has been automatically selected. Additional lead time and charges will apply.
Custom size rectangular transoms require 2 weeks additional lead time (4 weeks total).

YOUR PROFESSIONAL-CLASS PRODUCT

Legacy 20-Gauge Smooth Steel Entry Door with Clear Glass

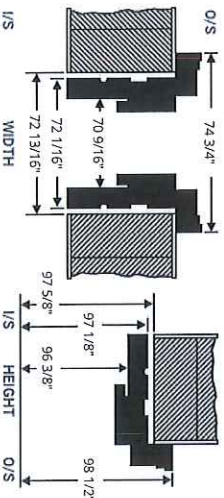


OUTSIDE VIEW



INSIDE VIEW

SIZING



HANDING



ENERGY

ENERGY PERFORMANCE RATINGS	
U-Factor (U5/1-P)	Solar Heat Gain Coefficient
0.28	0.16
ADDITIONAL PERFORMANCE RATINGS	
Visible Transmittance	-
0.17	-



877 389 0835
2150 State Route 39
Sugar Creek, OH 44581

QUOTE INFORMATION

Job: Truridge South Court
Order #5863546-20

DETAILS

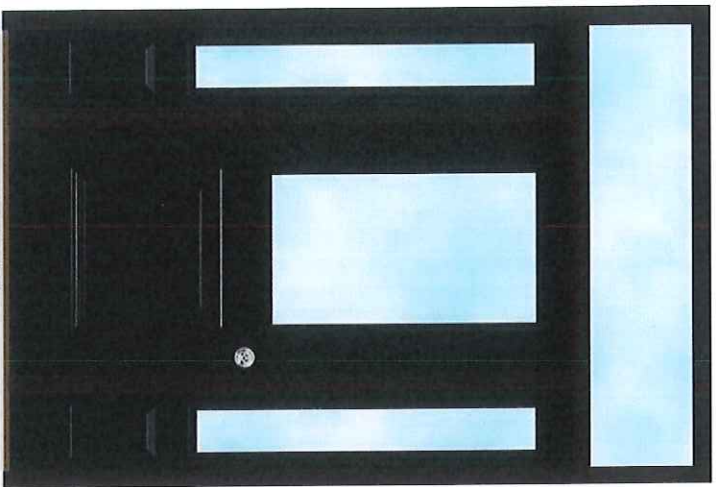
- Legacy Single Entry Door in Framesaver Frame
- 36" x 80" Nominal Size
- 16" Sidelite Width
- Unit Size: 72 1/16" x 97 1/8"
- Frame Depth: 6 9/16"
- Inside Mullions: Match Outer Frame Depth
- 2" Standard Brickmold
- Left Hand Inswing - Inside Looking Out
- Entry Door
- 2 Panel 439 Style 20-Gauge Smooth Steel Door
- Comfortech DC
- Coal Black Inside and Outside
- Sidelites on Both Sides
- 1 Panel 140 Style 24-Gauge Smooth Steel Sidelite
- Comfortech DC
- Coal Black Inside and Outside
- Rectangular Transom
- Custom Transom Size: 72 1/16" x 15 7/16"
- Comfortech DC
- Hardware
- Satin Nickel Georgian Lockset
- Frame
- Textured Coal Black Aluminum Frame Cladding
- Coal Black Inside Frame
- Framesaver Inside Mull Cover - Coal Black
- Mill Finish ZAC Auto-Adjusting Threshold (7 5/8" Depth)
- Satin Nickel Ball Bearing Hinges

INFORMATION AND WARNINGS

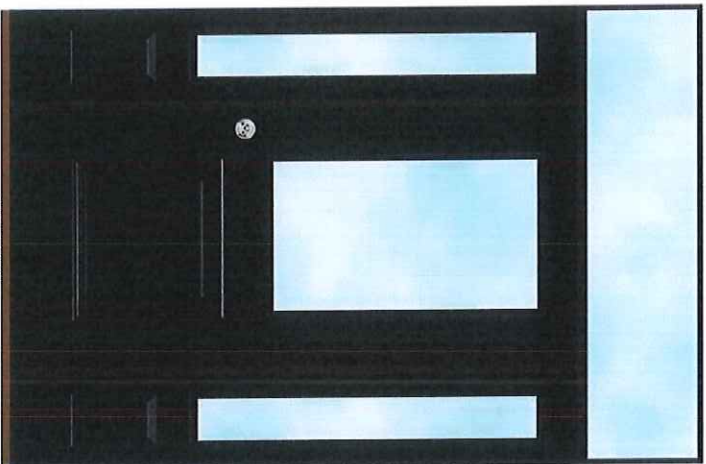
A special order slab has been automatically selected. Additional lead time and charges will apply.
Custom size rectangular transoms require 2 weeks additional lead time (4 weeks total).

YOUR PROFESSIONAL-CLASS PRODUCT

Legacy 20-Gauge Smooth Steel Entry Door with Clear Glass

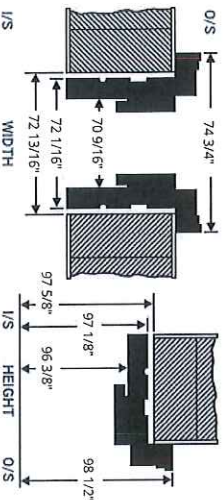


OUTSIDE VIEW



INSIDE VIEW

SIZING



HANDING



ENERGY

ENERGY PERFORMANCE RATINGS	
U-Factor (U5/RP)	Solar Heat Gain Coefficient
0.28	0.16
ADDITIONAL PERFORMANCE RATINGS	
Visible Transmittance	-
0.17	-



877.389.0835
2150 State Route 39
Sugar Creek, OH 44681

QUOTE INFORMATION

Job: Truridge South Court
Order #5863546-8

DETAILS

- Legacy Single Entry Door in Framesaver Frame
- 36" x 80" Nominal Size
- 16" Sidelite Width
- Unit Size: 72 1/16" x 97 1/8"
- Frame Depth: 6 9/16"
- Inside Mullions: Match Outer Frame Depth
- 2" Standard Brickmold
- Left Hand Inswing - Inside Looking Out
- Entry Door
- 1 Panel 430 Style 20-Gauge Smooth Steel Door With High-Definition Embossing
- Comfortech DC
- Coal Black Inside and Outside
- Sidelites on Both Sides
- 1 Panel 140 Style 24-Gauge Smooth Steel Sidelite
- Comfortech DC
- Coal Black Inside and Outside
- Rectangular Transom
- Custom Transom Size: 72 1/16" x 15 7/16"
- Comfortech DC
- Hardware
- Satin Nickel Georgian Lockset
- Frame
- Textured Coal Black Aluminum Frame Cladding
- Coal Black Inside Frame
- Framesaver Inside Mull Cover - Coal Black Mill Finish ZAC Auto-Adjusting Threshold (7 5/8" Depth)
- Satin Nickel Ball Bearing Hinges

INFORMATION AND WARNINGS

A special order slab has been automatically selected. Additional lead time and charges will apply.
Custom size rectangular transoms require 2 weeks additional lead time (4 weeks total).