



BOARDS & COMMISSIONS APPLICATION

132 North Elmwood Avenue
330-722-9038
www.medinaoh.org

Application Number P24-32

GENERAL	Date of Application <u>11-26-24</u> Property Location <u>890 W. SMITH RD MEDINA OH</u> Description of Project <u>NEW PARKING LOT LIGHTING.</u>
CONTACT INFORMATION	Applicant Name <u>JOHN KIRSCHNER</u> Address <u>890 W. SMITH RD</u> City <u>MEDINA</u> State <u>OH</u> Zip <u>44256</u> Phone <u>830-764-7861</u> Email <u>john.kirschner@owenscorning.com</u> Property Owner Name <u>OWENS CORNING</u> Address <u>890 W. SMITH RD</u> City <u>MEDINA</u> State <u>OH</u> Zip <u>44256</u> Phone <u>SAME ABOVE</u> Email <u>SAME ABOVE</u>
APPLICATION TYPE	Planning Commission Site Plan <input type="checkbox"/> Conditional Zoning Certificate <input type="checkbox"/> Code or Map Amendment <input type="checkbox"/> Preliminary Plan <input type="checkbox"/> Final Plat <input type="checkbox"/> Conditional Sign (EMC/Shopping Ctr) <input type="checkbox"/> Cert. of Appr. (TCOV) <input type="checkbox"/> Other <input checked="" type="checkbox"/> Historic Preservation Board Certificate of Appropriateness <input type="checkbox"/> Conditional Sign <input type="checkbox"/> Board of Zoning Appeals Variance <input type="checkbox"/> Appeal <input type="checkbox"/>
APPLICANT SIGNATURE	By signing this application, I hereby certify that: 1) The information contained in this application is true and accurate to the best of my knowledge; 2) I am authorized to make this application as the property owner of record or I have been authorized to make this application by the property owner of record; 3) I assume sole responsibility for correspondence regarding this application; and 4) I am aware that all application requirements must be submitted prior to the formal acceptance of my application. Signature <u></u> Date <u>11-26-24</u>
OFFICIAL USE	Zoning District <u>I-1</u> Fee (See Fee Sheet) \$ <u>-</u> Meeting Date <u>12/12/24</u> Check Box when Fee Paid <input type="checkbox"/>

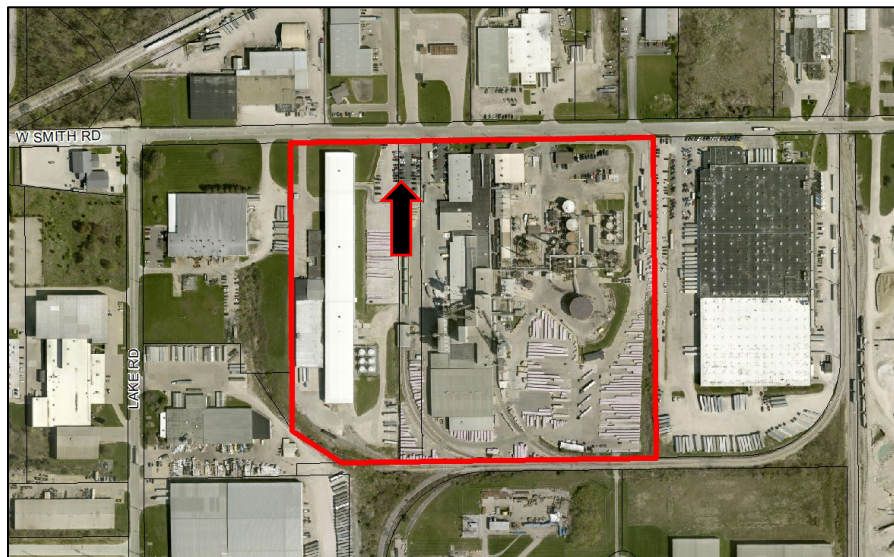
P24-32

Owens Corning Parking Lot Lighting

Property Owner: Owens Corning Roofing and Asphalt LLC and 900 W Smith LLC
Applicant: John Kirschner
Location: 890 and 900 West Smith Road
Zoning: I-1 (Industrial)
Request: Approval for an increased lighting height

LOCATION AND SURROUNDING USES

The subject site incorporates three properties encompassing 31.8 acres located on the south side of West Smith Road. Adjacent properties are zoned I-1 and contain industrial uses.



BACKGROUND & PROPOSED APPLICATION

Owens Corning is currently in the process of installing new parking lot lights in a lot on the west side of the facility. The proposed lights are 27.5 ft. in height including a 25 ft. light pole and 2.5 ft. concrete base. Lighting incorporates a compliant full cut-off light fixture, which directs light downward.

PARKING LOT LIGHTING REGULATIONS

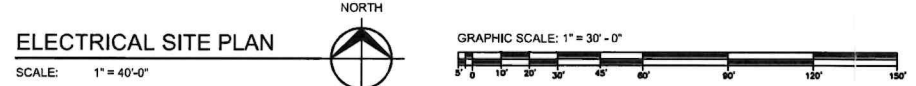
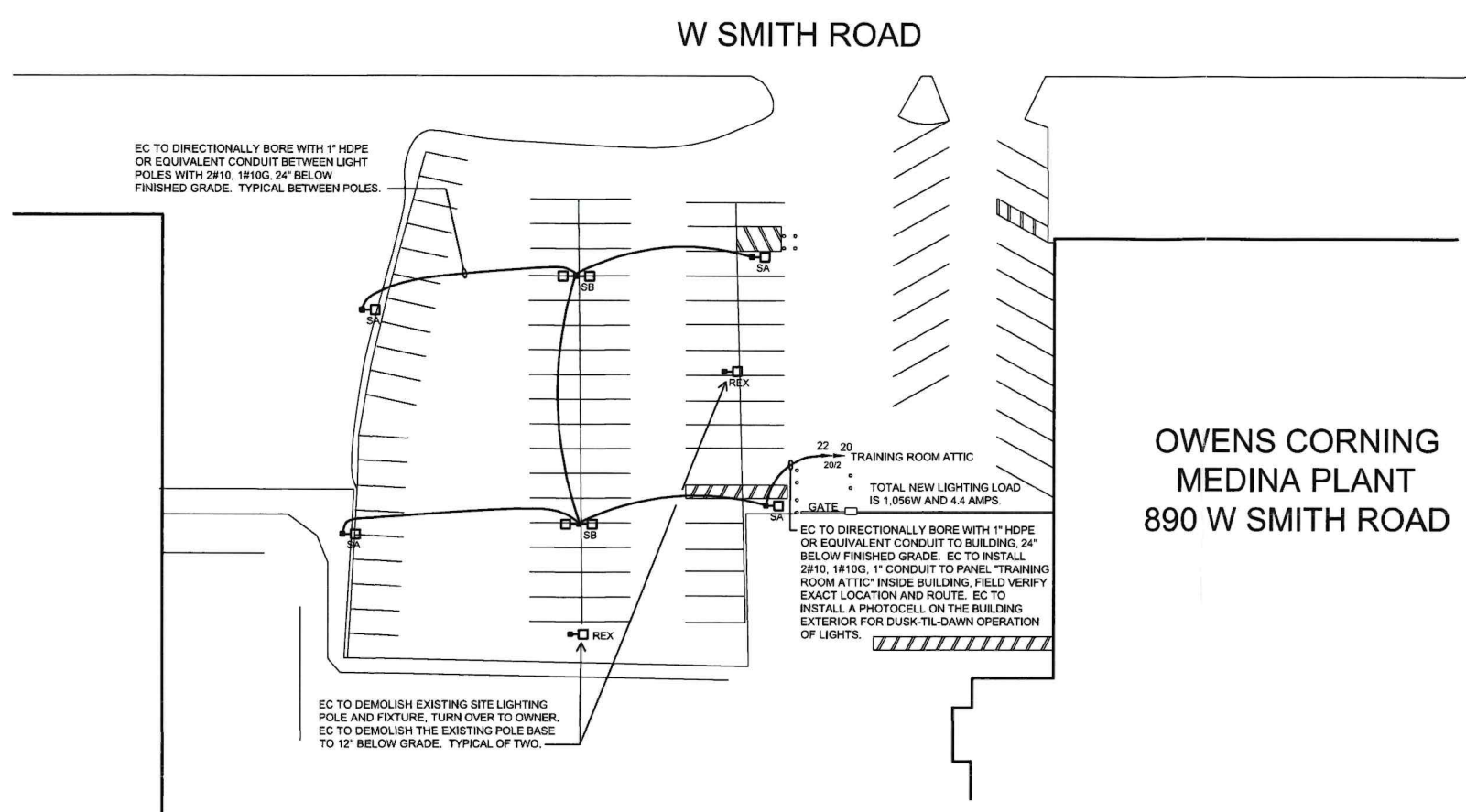
Section 1145.09(c) of the Zoning Code limits the height of parking lot lights in the I-1 district to 25 ft. However, Section 1145.09(c)(5)(C.) allows the Planning Commission to allow an increased lighting height, as follows:

- C. The Planning Commission may approve greater heights upon a showing by the applicant that the additional height complies with both of the following standards:
 - 1. The additional height is necessary to efficiently illuminate outdoor areas; and
 - 2. The additional height will have no adverse effect on adjacent properties.

COMMUNITY DEVELOPMENT DEPARTMENT STAFF RECOMMENDATION

Staff recommends approval of the request as the proposed lighting incorporates a height necessary to illuminate a large parking lot in an industrial area.

The Poles are actually 25' but to protect the poles and employees since they are placed directly in parking area we have added a 30" concrete base to protect the poles. This is what raises them to 27.5' which gives us a larger footprint of lighting for the benefit of our employees to see while coming and going to work.



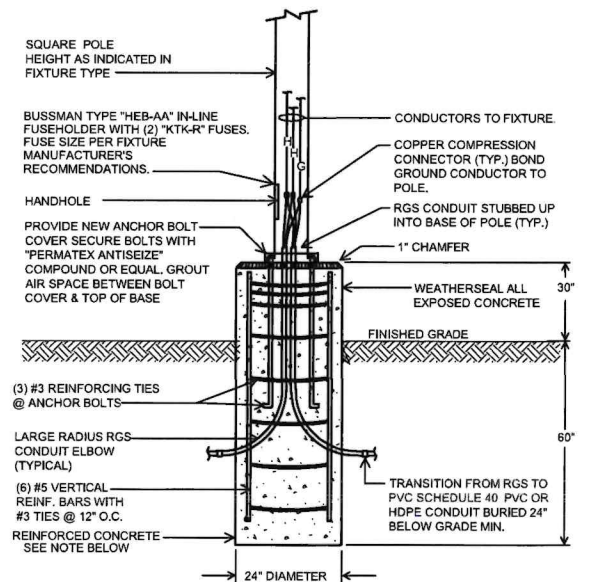
EXTERIOR LIGHTING FIXTURE SCHEDULE				
TYPE AND SYMBOL	FIXTURE WATTS	VOLTS	MANUFACTURER CATALOG NO.	DESCRIPTION
SA □	132W	240V	LUMARK PREVAIL PRV-PA2B-740-U-5WQ- SA-BZ	SHALL BE MOUNTED ON 25\"/>
SB □	204W	240V	LUMARK PREVAIL DUAL PRV-PA2B-740-U-4TW- SA-BZ	SHALL BE MOUNTED ON 25\"/>

NOTE:
DO ALL EXCAVATION AND BACKFILLING NECESSARY FOR INSTALLATION OF WORK, PRIOR TO OPENING AN EXCAVATION. EFFORT SHALL BE MADE TO DETERMINE WHETHER UNDERGROUND INSTALLATIONS WILL BE ENCOUNTERED. (I.E. TELECOMMUNICATIONS, SEWER, WATER, FUEL, ELECTRIC LINES, ETC) AND WHERE SUCH UNDERGROUND INSTALLATIONS ARE LOCATED. WHEN THE EXCAVATION APPROACHES THE ESTIMATED LOCATION OF SUCH INSTALLATIONS, THE EXACT LOCATION SHALL BE DETERMINED. WHEN IT IS UNCOVERED, PROPER SUPPORTS SHALL BE PROVIDED FOR THE EXISTING INSTALLATION. UTILITY COMPANIES SHALL BE CONTACTED AND ADVISED OF THE PROPOSED WORK PRIOR TO THE START OF ACTUAL EXCAVATION, CONTACT THE MICHIGAN UTILITIES PROTECTION SERVICE (MISS DIG) 48 HOURS PRIOR TO STARTING WORK. TELEPHONE AT 811 OR 800-482-7171.

ELECTRICAL SYMBOL LEGEND	
SYMBOL	DESCRIPTION
	HOMERUN TO PANEL INDICATING CIRCUIT NUMBERS - ALL WIRING SHALL BE #12 WITH GROUND WIRE UON (INCREASE TO #10 FOR CIRCUITS BETWEEN 100 AND 200 LF) CONSULT ENGINEER FOR RUNS OVER 200 LIN FEET IF WIRE SIZE IS NOT INDICATED - ALL HOMERUNS SHALL BE TO A 20 AMPERE, 1 POLE CIRCUIT BREAKER UON. WIRE FILL AS REQUIRED FOR APPLICATION INDICATED.
	JUNCTION BOX - MOUNTING HEIGHT AND SIZE AS REQUIRED BY CODE OR AS NOTED ON DRAWINGS
	CIRCUIT BREAKER, SIZE AS INDICATED ON THE DRAWINGS
	FUSED DISCONNECT SWITCH, SIZE AS INDICATED ON THE DRAWINGS. EC TO INCLUDE RK1 FUSES.
	SAFETY SWITCH - HEAVY DUTY, UNFUSED
	FUSED DISCONNECT SWITCH, SEE ONE-LINE FOR SIZES

ABBREVIATIONS LEGEND	
SYMBOL	DESCRIPTION
ETR	EXISTING TO REMAIN
REX	REMOVE EXISTING
AF	AMP FUSE
GFCI	GROUND FAULT CIRCUIT INTERRUPTER
EC	ELECTRICAL CONTRACTOR
NEC	NATIONAL ELECTRICAL CODE
UON	UNLESS OTHERWISE NOTED

- ELECTRICAL SPECIFICATIONS:**
- SECURE AND PAY FOR ALL PERMITS, FEES, AND INSPECTIONS REQUIRED FOR THE ELECTRICAL WORK.
 - WORK SHALL BE INSTALLED IN ACCORDANCE WITH ALL APPLICABLE PROVISIONS OF LOCAL AND STATE CODES (OBC), AS WELL AS THE NATIONAL ELECTRICAL CODE (NEC), AS INTERPRETED BY THE LOCAL AUTHORITY HAVING JURISDICTION.
 - ALL WIRE SHALL BE COPPER UNLESS OTHERWISE NOTED, SEE CONVERSION CHART FOR ALUMINUM SIZING. ALL WIRING SHALL BE INSTALLED IN CONDUIT AS PER THE NEC.
 - ALL EQUIPMENT SHALL BE NEW AND UL LISTED AND LABELED FOR ITS INTENDED PURPOSE AND FUNCTION.



SITE LIGHTING FIXTURE POLE BASE DETAIL
SCALE: NONE

RECEIVED
NOV 19 2024
24-1412
BY: _____

REVISIONS	DATE

STADELMAN ASSOCIATES INC.
CONSULTING ENGINEERS
8604 HARTMAN ROAD
WADSWORTH, OH 44281
www.stadelman.net
PHONE: (330)-926-2600 FAX: (330)-926-4531

OWENS CORNING MEDINA PLANT
890 W SMITH ROAD
MEDINA, OH 44256
PARKING LOT LIGHTING REPLACEMENT

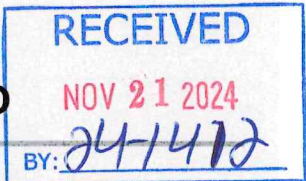
DRAWN	TAR
CHECKED	CSP
DATE	10/30/24
SCALE	AS NOTED
JOB NO.	24N036
SHEET	E-1

Project	OWENS CORNING PARKING LOT C	Catalog #	(2)PRV-PA2B-740-U-5WQ-SA-BZ	Type	SA
Prepared by		Notes		Date	



Lumark

Prevail Discrete LED



Area / Site Luminaire

Product Features



Product Certifications



Interactive Menu

- Ordering Information page 2
- Mounting Details page 3, 4
- Optical Configurations page 5
- Product Specifications page 5
- Energy and Performance Data page 6, 7
- Control Options page 8

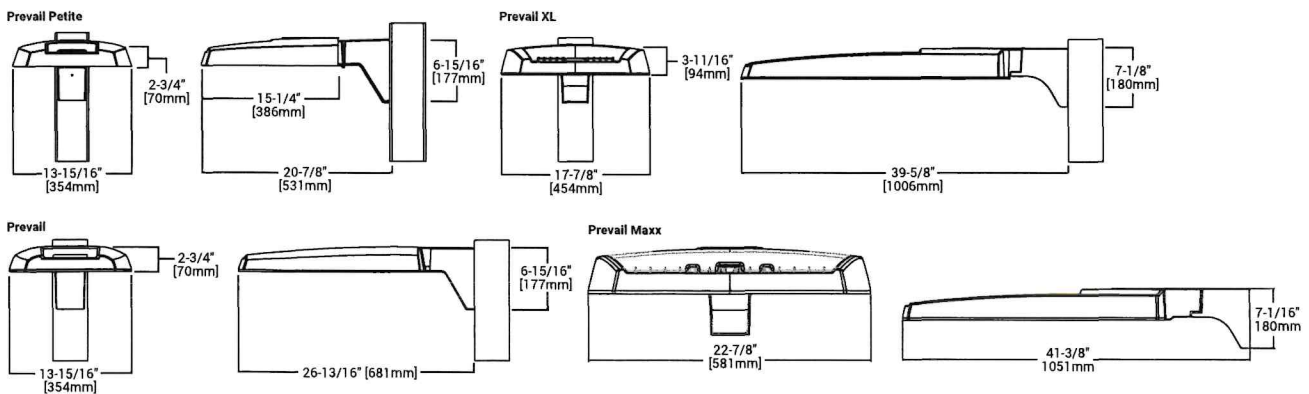
Quick Facts

- Direct-mounted discrete light engine for improved optical uniformity and visual comfort
- Lumen packages range from 4,300 - 68,000 nominal lumens (30W - 550W)
- Replaces 70W up to 1,000W HID equivalents
- Efficacies up to 157 lumens per watt
- Standard universal quick mount arm with universal drill pattern

Connected Systems

- WaveLinx

Dimensional Details



NOTES:
 1. Visit <https://www.designlights.org/search/> to confirm qualification. Not all product variations are DLC qualified.
 2. IDA Certified for 3000K CCT and warmer only.

Ordering Information

SAMPLE NUMBER: PRV-XL-PA4B-740-U-T4W-BZ

(2)

Product Family ^{1,2}	Light Engine		Color Temperature	Voltage	Distribution	Mounting (Included)	Finish
	Configuration	Drive Current ⁴					
PRV-P=Prevail Petite BAA-PRV-P=Prevail Petite BAA Buy American Act Compliant ³ TAA-PRV-P=Prevail Petite TAA Trade Agreements Act Compliant ³	PA1=1 Panel, 24 LED Rectangle	A=400mA Nominal B=700mA Nominal C=950mA Nominal D=1200mA Nominal	740=70CRI, 4000K 700=70CRI, 3000K 750=70CRI, 5000K 8540=85CRI, 4000K	U=Universal, 120-277V H=High Voltage, 347-480V 1=120V 2=208V 3=240V 4=277V 8=480V ⁵ 9=347V DV=DuraVolt, 277-480V ^{5,6}	T2R=Type II Roadway T2U=Type II Urban T3=Type III T4W=Type IV Wide 5WQ=Type V Square Wide	SA=QM Standard Versatile Arm MA=QM Mast Arm FMA=Fixed Mast Arm ²⁷ WM=QM Wall Mount Arm ADJA-WM= Adjustable Arm - Wall Mount ²⁸ ADJA=Adjustable Arm - Pole Mount ²⁸ ADJS=Adjustable Arm - Slipfitter, 3" vertical tenon ²⁸ SP2=Adjustable Arm - Slipfitter, 2 3/8" vertical tenon ^{28, 29}	AR=Grey BZ=Bronze BK=Black DP=Dark Platinum GM=Graphite Metallic WH=White
PRV=Prevail BAA-PRV=Prevail BAA Buy American Act Compliant ³ TAA-PRV=Prevail TAA Trade Agreements Act Compliant ³	PA1=1 Panel, 24 LED Rectangle PA2=2 Panels, 48 LED Rectangles	A=700mA Nominal B=950mA Nominal					
PRV-XL=PRV XL BAA-PRV-XL=Prevail XL BAA Buy American Act Compliant ³ TAA-PRV-XL=Prevail XL TAA Trade Agreements Act Compliant ³	PA3=3 Panels, 72 LED Rectangles PA4=4 Panels, 96 LED Rectangles	A=750mA Nominal B=950mA Nominal					
PRV-M=Prevail Maxx BAA-PRV-M=Prevail Maxx BAA Buy American Act Compliant ³ TAA-PRV-M=Prevail Maxx TAA Trade Agreements Act Compliant ³	PA6= 6 Panels, 144 LED Rectangles	A=600mA Nominal B=800mA Nominal C=1000mA Nominal D=1200mA Nominal					

Options (Add as Suffix)


Accessories (Order Separately) ^{20,21}

10K=10kV UL 1449 Fused Surge Protective Device 20MSP=20kV MOV Surge Protective Device 20K=20kV UL 1449 Fused Surge Protective Device F=Single Fuse (Used with Voltages 120, 277 or 347V) FD=Double Fuse (Used with Voltages 208, 240 or 480V) FAD=C=Field Adjustable Dimming Controller ²⁹ L90=Optics Rotated 90° Left R90=Optics Rotated 90° Right CC=Coastal Construction finish ⁹ HSS=House Side Shield (Factory Installed) ⁷ HA=50°C High Ambient Temperature ⁸ PR=NEMA 3-PIN Twistlock Photocontrol Receptacle ¹⁰ PR7=NEMA 7-PIN Twistlock Photocontrol Receptacle ¹⁰ MS/DIM-L08=Motion Sensor for Dimming Operation, Up to 8' Mounting Height ^{11,12,13} MS/DIM-L20=Motion Sensor for Dimming Operation, 9' - 20' Mounting Height ^{11,12,13} MS/DIM-L40=Motion Sensor for Dimming Operation, 21' - 40' Mounting Height ^{11,12,13} SPB1=Motion Sensor for Dimming Operation, BLE Interface, Up to 8' Mounting Height ^{11,14} SPB2=Motion Sensor for Dimming Operation, BLE Interface, 8' - 20' Mounting Height ^{11,14,27,28} SPB4=Motion Sensor for Dimming Operation, BLE Interface, 21' - 40' Mounting Height ^{11,14,28}	WPS2XX=Wavelinx Pro, Dimming Motion, SR Driver and Daylight, WAC Programmable, 7' - 15' Mounting Height ^{11,12,13,14,17} WPS4XX=Wavelinx Pro, Dimming Motion, SR Driver and Daylight, WAC Programmable, 15' - 40' Mounting Height ^{11,12,13,14,17} WLS2XX=WaveLinx Lite, SR Driver, Dimming Motion and Daylight, Bluetooth Programmable, 7' - 15' Mounting ^{11,12,13,14,17} WLS4XX=WaveLinx Lite, SR Driver, Dimming Motion and Daylight, Bluetooth Programmable, 15' - 40' Mounting ^{11,12,13,14,17} (See Table Below)=LumenSafe Integrated Network Security Camera ^{14,19}	PRVSA-XX=Standard Arm Mounting Kit ²² PRVMA-XX=Mast Arm Mounting Kit ²² PRVWM-XX=Wall Mount Kit ²² PRV-ADJA-XX=Adjustable Arm - Pole Mount Kit ²² PRV-ADJS-XX=Adjustable Arm - Slipfitter Kit ²² PRV-ADJA-WM-XX=Adjustable Arm - Wall Mount Kit ²² PRVXLSA-XX=Standard Arm Mounting Kit ²⁸ PRVXLMA-XX=Mast Arm Mounting Kit ²⁸ PRVXLWM-XX=Wall Mount Kit ²⁸ PRV-XL-ADJA-XX=Adjustable Arm - Pole Mount Kit ²⁸ PRV-XL-ADJA-WM-XX= Adjustable Arm - Wall Mount Kit ²⁸ PRV-XL-ADJS-XX= Adjustable Arm - Slipfitter Kit ²⁸ PRV-M-ADJA-XX=Adjustable Arm - Pole Mount Kit ²⁷ PRV-M-ADJS-XX=Adjustable Arm - Slipfitter Kit ²⁷ PRV-M-ADJA-WM-XX=Adjustable Arm - Wall Mount Kit ²⁷ MA1010-XX=Single Tenon Adapter for 3-1/2" O.D. Tenon MA1011-XX=2@180° Tenon Adapter for 3-1/2" O.D. Tenon	MA1017-XX=Single Tenon Adapter for 2-3/8" O.D. Tenon MA1018-XX=2@180° Tenon Adapter for 2-3/8" O.D. Tenon SRA238=Tenon Adapter from 3" to 2-3/8" PRV/DIS-FDV=Full Drop Visor ²³ PRVXL/DIS-FDV=Full Drop Visor ¹⁸ HSS-VP=House Side Shield Kit, Vertical Panel ^{7,24} HSS-HP=House Side Shield Kit, Horizontal Panel ^{7,24} VGS-ARCH= Panel Drop Shield, Short VGL-ARCH= Panel Drop Shield, Long OA/RA1013=Photocontrol Shorting Cap OA/RA1014=NEMA Photocontrol - 120V OA/RA1016=NEMA Photocontrol - Multi-Tap 105-285V OA/RA1201=NEMA Photocontrol - 347V OA/RA1027=NEMA Photocontrol - 480V FSIR-100=Wireless Configuration Tool for Occupancy Sensor ²⁵ WOLC-7P-10A=Wavelinx Outdoor Control Module (7-PIN) ²⁴
---	---	---	--

NOTES:

- DesignLights Consortium® Qualified. Refer to www.designlights.org Qualified Products List under Family Models for details.
- Customer is responsible for engineering analysis to confirm pole and fixture compatibility for applications. Refer to installation instructions and pole white paper WPS13001EN for additional support information.
- Only product configurations with these designated prefixes are built to be compliant with the Buy American Act of 1933 (BAA) or Trade Agreements Act of 1979 (TAA), respectively. Please refer to DOMESTIC.PREFERENCES website for more information. Components shipped separately may be separately analyzed under domestic preference requirements.
- Nominal drive currents shown here. For actual drive current by configuration, refer to Power and Lumens tables.
- 480V not to be used with ungrounded or impedance grounded systems.
- DuraVolt drivers feature added protection from power quality issues such as loss of neutral, transients and voltage fluctuations. Visit www.signify.com/duravolt for more information.
- House Side Shield not for use with 5WQ distribution.
- Not available with PA1D light engine in Petite housing (PRV-P).
- Coastal construction finish salt spray tested to over 5,000-hours per ASTM B117, with a scribe rating of 9 per ASTM D1654.
- If High Voltage (H) or DuraVolt (DV) is specified, use a photocontrol that matches the input voltage used.
- Controls system is not available in combination with a photocontrol receptacle (PR or PR7) or another controls system (MS SPB).
- Option not available with High Voltage (H) or DuraVolt (DV). Must specify Universal (U), 347V (9), or 480V (8) voltage.
- Utilizes the Wattstopper sensor FSP-211. Sensor color white unless specified otherwise via PDR. To field-configure, order FSIR-100 accessory separately.
- Utilizes the Wattstopper sensor FSP-3XX series. Sensor color determined by product finish. See Sensor Color Reference Table. Field-configures via mobile application. See Controls section for details.
- Sensor passive infrared (PIR) may be overly sensitive when operating below -20°C (-4°F).
- In order for the device to be field-configurable, requires WAC Gateway components WAC-PoE and WPOE-120 in appropriate quantities. Only compatible with Wavelinx system and software and requires system components to be installed for operation. See website for more Wavelinx application information.
- Replace XX with sensor color (WH, BZ or BK).
- Only available in PRV-XL configurations.
- Not available with High Voltage (H, DV, 8 or 9) or HA options. Consult LumenSafe system product pages for additional details and compatibility information.
- Replace XX with paint color.
- For BAA or TAA requirements, Accessories sold separately will be separately analyzed under domestic preference requirements. Consult factory for further information.
- Not for use with PRV-XL or PRV-M configurations.
- Only for use with PRV. Not applicable to PRV-M, PRV-XL, or PRV-P.
- Must order one per optic/LED when ordering as a field-installable accessory (1, 2, 3, 4, or 6). Refer to House Side Shield reference table for details.
- This tool enables adjustment to Motion Sensor (MS) parameters including high and low modes, sensitivity, time delay, cutoff and more. Consult your lighting representative for more information.
- Requires 7-PIN NEMA twistlock photocontrol receptacle (PR7) option. The WOLC-7 cannot be used in conjunction with other controls systems (MS or LWR). Only for use at 120-347V
- Only available for PRV-M configurations.
- Only for use with PRV-XL.
- Fixed for PRV-M
- Cannot be used with PR7 or other motion response control options.

LumenSafe Integrated Network Security Camera Technology Options (Add as Suffix)

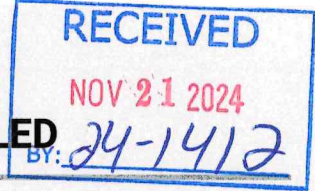
Product Family	Camera Type	Data Backhaul
L=LumenSafe Technology 	H=Dome Camera, High Res Z=Dome Camera, Remote PTZ	C=Cellular, Customer Installed SIM Card A=Cellular, Factory Installed AT&T SIM Card V=Cellular, Factory Installed Verizon SIM Card S=Cellular, Factory Installed Sprint SIM Card E=Ethernet Networking

Project	OWENS CORNING PARKING LOT C	Catalog #	PRV-PA2B-740-U-5WQ-SA-BZ	Type	SB
Prepared by		Notes		Date	



Lumark

Prevail Discrete LED



Area / Site Luminaire

Product Features



Product Certifications



Interactive Menu

- Ordering Information page 2
- Mounting Details page 3, 4
- Optical Configurations page 5
- Product Specifications page 5
- Energy and Performance Data page 6, 7
- Control Options page 8

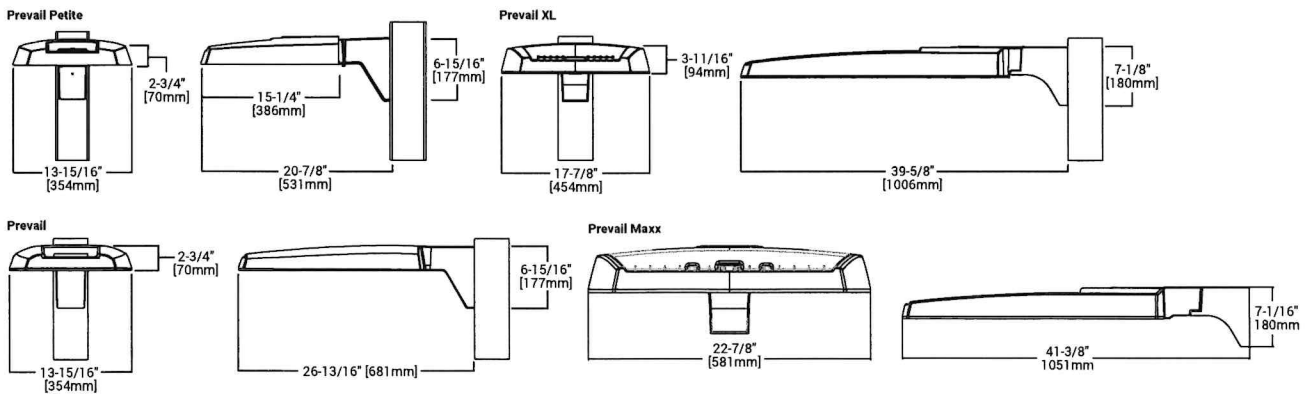
Quick Facts

- Direct-mounted discrete light engine for improved optical uniformity and visual comfort
- Lumen packages range from 4,300 - 68,000 nominal lumens (30W - 550W)
- Replaces 70W up to 1,000W HID equivalents
- Efficacies up to 157 lumens per watt
- Standard universal quick mount arm with universal drill pattern

Connected Systems

- WaveLinx

Dimensional Details



NOTES:

1. Visit <https://www.designlights.org/search/> to confirm qualification. Not all product variations are DLC qualified.
2. IDA Certified for 3000K CCT and warmer only.

Ordering Information

SAMPLE NUMBER: PRV-XL-PA4B-740-U-T4W-BZ

Product Family ^{1,2}	Light Engine		Color Temperature	Voltage	Distribution	Mounting (Included)	Finish
	Configuration	Drive Current ⁴					
PRV-P=Prevail Petite BAA-PRV-P=Prevail Petite BAA Buy American Act Compliant ³ TAA-PRV-P=Prevail Petite TAA Trade Agreements Act Compliant ³	PA1=1 Panel, 24 LED Rectangle	A=400mA Nominal B=700mA Nominal C=950mA Nominal D=1200mA Nominal	740=70CRI, 4000K 700=70CRI, 3000K 750=70CRI, 5000K 8540=85CRI, 4000K	U=Universal, 120-277V H=High Voltage, 347-480V 1=120V 2=208V 3=240V 4=277V 8=480V ⁵ 9=347V DV=DuraVolt, 277-480V ^{5,6}	T2R=Type II Roadway T2U=Type II Urban T2=Type III T4W=Type IV Wide SWQ=Type V Square Wide	SA=QM Standard Versatile Arm MA=QM Mast Arm FMA=Fixed Mast Arm ²⁷ WM=QM Wall Mount Arm ADJA-WM= Adjustable Arm - Wall Mount ²⁸ ADJA=Adjustable Arm - Pole Mount ²⁹ ADJS=Adjustable Arm - Slipfitter, 3" vertical tenon ²⁹ SP2=Adjustable Arm - Slipfitter, 2 3/8" vertical tenon ^{27, 29}	AP=Grey BZ=Bronze BK=Black DP=Dark Platinum GM=Graphite Metallic WH=White
PRV=Prevail BAA-PRV=Prevail BAA Buy American Act Compliant ³ TAA-PRV=Prevail TAA Trade Agreements Act Compliant ³	PA1=1 Panel, 24 LED Rectangle PA2=2 Panels, 48 LED Rectangles	A=700mA Nominal B=950mA Nominal					
PRV-XL=PRV XL BAA-PRV-XL=Prevail XL BAA Buy American Act Compliant ³ TAA-PRV-XL=Prevail XL TAA Trade Agreements Act Compliant ³	PA3=3 Panels, 72 LED Rectangles PA4=4 Panels, 96 LED Rectangles	A=750mA Nominal B=950mA Nominal					
PRV-M=Prevail Maxx BAA-PRV-M=Prevail Maxx BAA Buy American Act Compliant ³ TAA-PRV-M=Prevail Maxx TAA Trade Agreements Act Compliant ³	PA6= 6 Panels, 144 LED Rectangles	A=600mA Nominal B=800mA Nominal C=1000mA Nominal D=1200mA Nominal					

Options (Add as Suffix)


Accessories (Order Separately) ^{20,21}

10K=10kV UL 1449 Fused Surge Protective Device 20MSP=20kV MOV Surge Protective Device 20K=20kV UL 1449 Fused Surge Protective Device F=Single Fuse (Used with Voltages 120, 277 or 347V) FD=Double Fuse (Used with Voltages 208, 240 or 480V) FAD=Field Adjustable Dimming Controller ³⁰ L90=Optics Rotated 90° Left R90=Optics Rotated 90° Right CC=Coastal Construction finish ⁹ HSS=House Side Shield (Factory Installed) ⁷ HA=50°C High Ambient Temperature ⁸ PR=NEMA 3-PIN Twistlock Photocontrol Receptacle ¹⁰ PR7=NEMA 7-PIN Twistlock Photocontrol Receptacle ¹⁰ MS/DIM-L08=Motion Sensor for Dimming Operation, Up to 8' Mounting Height ^{11, 12, 13} MS/DIM-L20=Motion Sensor for Dimming Operation, 9' - 20' Mounting Height ^{11, 12, 13} MS/DIM-L40=Motion Sensor for Dimming Operation, 21' - 40' Mounting Height ^{11, 12, 13} SPB1=Motion Sensor for Dimming Operation, BLE Interface, Up to 8' Mounting Height ^{11, 14} SPB2=Motion Sensor for Dimming Operation, BLE Interface, 8' - 20' Mounting Height ^{11, 14, 28} SPB4=Motion Sensor for Dimming Operation, BLE Interface, 21' - 40' Mounting Height ^{11, 14, 28}	WPS2XX=Wavelinx Pro, Dimming Motion, SR Driver and Daylight, WAC Programmable, 7' - 15' Mounting Height ^{11, 12, 13, 14, 17} WPS4XX=Wavelinx Pro, Dimming Motion, SR Driver and Daylight, WAC Programmable, 15' - 40' Mounting Height ^{11, 12, 13, 14, 17} WLS2XX=WaveLinx Lite, SR Driver, Dimming Motion and Daylight, Bluetooth Programmable, 7' - 15' Mounting Height ^{11, 12, 13, 14, 17} WLS4XX=WaveLinx Lite, SR Driver, Dimming Motion and Daylight, Bluetooth Programmable, 15' - 40' Mounting Height ^{11, 12, 13, 14, 17} (See Table Below)=LumenSafe Integrated Network Security Camera ^{16, 19}	PRVSA-XX=Standard Arm Mounting Kit ²² PRVMA-XX=Mast Arm Mounting Kit ²² PRVWM-XX=Wall Mount Kit ²² PRV-ADJA-XX=Adjustable Arm - Pole Mount Kit ²² PRV-ADJS-XX=Adjustable Arm - Slipfitter Kit ²² PRV-ADJA-WM-XX=Adjustable Arm - Wall Mount Kit ²² PRVXLSA-XX=Standard Arm Mounting Kit ²⁸ PRVXLSMA-XX=Mast Arm Mounting Kit ²⁸ PRVXLWM-XX=Wall Mount Kit ²⁸ PRV-XL-ADJA-XX=Adjustable Arm - Pole Mount Kit ²⁸ PRV-XL-ADJS-XX= Adjustable Arm - Slipfitter Kit ²⁸ PRV-XL-ADJA-WM-XX= Adjustable Arm - Wall Mount Kit ²⁷ PRV-M-ADJS-XX=Adjustable Arm - Slipfitter Kit ²⁷ PRV-M-ADJA-WM-XX=Adjustable Arm - Wall Mount Kit ²⁷ MA1010-XX=Single Tenon Adapter for 3-1/2" O.D. Tenon MA1011-XX=2@180° Tenon Adapter for 3-1/2" O.D. Tenon	MA1017-XX=Single Tenon Adapter for 2-3/8" O.D. Tenon MA1018-XX=2@180° Tenon Adapter for 2-3/8" O.D. Tenon SRA238=Tenon Adapter from 3" to 2-3/8" PRV/DIS-FDV=Full Drop Visor ²³ PRVXL/DIS-FDV=Full Drop Visor ¹⁸ HSS-VP=House Side Shield Kit, Vertical Panel ^{17, 24} HSS-HP=House Side Shield Kit, Horizontal Panel ^{7, 24} VGS-ARCH= Panel Drop Shield, Short VGL-ARCH= Panel Drop Shield, Long OA/RA1013=Photocontrol Shorting Cap OA/RA1014=NEMA Photocontrol - 120V OA/RA1016=NEMA Photocontrol - Multi-Tap 105-285V OA/RA1201=NEMA Photocontrol - 347V OA/RA1027=NEMA Photocontrol - 480V FSIR-100=Wireless Configuration Tool for Occupancy Sensor ²⁵ WOLC-7P-10A=Wavelinx Outdoor Control Module (7-PIN) ²⁶
---	--	---	---

NOTES:

- DesignLights Consortium® Qualified. Refer to www.designlights.org Qualified Products List under Family Models for details.
- Customer is responsible for engineering analysis to confirm pole and fixture compatibility for applications. Refer to installation instructions and pole white paper WPS13001EN for additional support information.
- Only product configurations with these designated prefixes are built to be compliant with the Buy American Act of 1933 (BAA) or Trade Agreements Act of 1979 (TAA), respectively. Please refer to DOMESTIC.PREFERENCES website for more information. Components shipped separately may be separately analyzed under domestic preference requirements.
- Nominal drive currents shown here. For actual drive current by configuration, refer to Power and Lumen tables.
- 480V not to be used with ungrounded or impedance grounded systems.
- DuraVolt drivers feature added protection from power quality issues such as loss of neutral, transients and voltage fluctuations. Visit www.signify.com/duravolt for more information.
- House Side Shield not for use with 5WQ distribution.
- Not available with PAID light engine in Petite housing (PRV-P).
- Coastal construction finish salt spray tested to over 5,000-hours per ASTM B117, with a scribe rating of 9 per ASTM D1654.
- If High Voltage (H) or DuraVolt (DV) is specified, use a photocontrol that matches the input voltage used.
- Controls system is not available in combination with a photocontrol receptacle (PR or PR7) or another controls system (MS SPB).
- Option not available with High Voltage (H) or DuraVolt (DV). Must specify Universal (U), 347V (9), or 480V (8) voltage.
- Utilizes the Wattstopper sensor FSP-211. Sensor color white unless specified otherwise via PDR. To field-configure, order FSIR-100 accessory separately.
- Utilizes the Wattstopper sensor FSP-3XX series. Sensor color determined by product finish. See Sensor Color Reference Table. Field-configures via mobile application. See Controls section for details.
- Sensor passive infrared (PIR) may be overly sensitive when operating below -20°C (-4°F).
- In order for the device to be field-configurable, requires WAC Gateway components WAC-PoE and WPOE-120 in appropriate quantities. Only compatible with Wavelinx system and software and requires system components to be installed for operation. See website for more Wavelinx application information.
- Replace XX with sensor color (WH, BZ or BK).
- Only available in PRV-XL configurations.
- Not available with High Voltage (H, DV, 9 or 8) or HA options. Consult LumenSafe system product pages for additional details and compatibility information.
- Replace XX with paint color.
- For BAA or TAA requirements, Accessories sold separately will be separately analyzed under domestic preference requirements. Consult factory for further information.
- Not for use with PRV-XL or PRV-M configurations.
- Only for use with PRV. Not applicable to PRV-M, PRV-XL, or PRV-P.
- Must order one per optic/LED when ordering as a field-installable accessory (1, 2, 3, 4, or 6). Refer to House Side Shield reference table for details.
- This tool enables adjustment to Motion Sensor (MS) parameters including high and low modes, sensitivity, time delay, cutoff and more. Consult your lighting representative for more information.
- Requires 7-PIN NEMA twistlock photocontrol receptacle (PR7) option. The WOLC-7 cannot be used in conjunction with other controls systems (MS or LWR). Only for use at 120-347V.
- Only available for PRV-M configurations.
- Only for use with PRV-XL.
- Fixed for PRV-M.
- Cannot be used with PR7 or other motion response control options.

LumenSafe Integrated Network Security Camera Technology Options (Add as Suffix)

Product Family	Camera Type	Data Backhaul
L=LumenSafe Technology 	H=Dome Camera, High Res Z=Dome Camera, Remote PTZ	C=Cellular, Customer Installed SIM Card A=Cellular, Factory Installed AT&T SIM Card V=Cellular, Factory Installed Verizon SIM Card S=Cellular, Factory Installed Sprint SIM Card E=Ethernet Networking