

**ORDINANCE NO. 10-17**

**AN ORDINANCE APPROVING AND ACCEPTING THE PLAT VACATING AND RE-DEDICATING FAIR ROAD AND DEDICATING A PORTION OF LAFAYETTE ROAD AND CREATING NEW CITY LOTS 9178 AND 9179.**

**WHEREAS:** The Planning Commission of the City of Medina, Ohio, did, at a regular meeting held December 8, 2016, approve the record plat of approving and accepting the plat vacating and re-dedicating Fair Road and dedicating a portion of Lafayette Road and creating new city lots 9178 and 9179 as submitted by the Medina County Commissioners, owner, and recommended the approval by Council.

**NOW, THEREFORE, BE IT ORDAINED BY THE COUNCIL OF THE CITY OF MEDINA, OHIO:**

**SEC. 1:** That the Record Plat vacating and re-dedicating Fair Road and dedicating a portion of Lafayette Road and creating new City Lots 9178 and 9179, as submitted by the Medina County Commissioners, owner of said land know as being part of Medina City Lots 1736, 1743, 1744 and 1745 and the whole of lots 1765, 1767, 2200, 2218 and 2219, is hereby accepted subject to all ordinances in effect in the City of Medina as of this date

**SEC. 2:** The President of Council, the Clerk of Council and the City Engineer are hereby authorized and directed to affix their certification to the record plat for filing.

**SEC. 3:** That the City Engineer is hereby authorized and directed to cause the Record Plat to be properly recorded in the Medina County Record of Plats.

**SEC. 4:** That Fair Road and Lafayette Road, as delineated on the Record Plat, is hereby accepted for public use as a dedicated street forever.

**SEC. 5:** That this Ordinance shall be in full force and effect at the earliest period allowed by law.

**PASSED:** January 23, 2017

**SIGNED:** John M. Coyne, III  
President of Council

**ATTEST:** Kathy Patton  
Clerk of Council

**APPROVED:** January 24, 2017

**SIGNED:** Dennis Hanwell  
Mayor

Effective date— February 23, 2017



MATCH LINE A-A - SEE SHEET No. 3

PART OF  
MCL 1745

PART OF  
MCL 1745

MCL 5266

PART OF MCL 1745  
NANCY L. & WENDY R. WILLIAMS  
C.R. VOL. 28, PG. 417/70  
DOC. NO. 20140304170  
03/04/2014

**EXISTING FAIR ROAD 60'**  
PLAT VOL. 9, PG. 42  
(TO BE WHOLLY VACATED - 3.7500 Ac.)

PROPOSED WATER LINE ELASBMENT  
(WIDTH VARIES)

MCL 8571  
MARK A. & ALYSSA L. WILLIAMS  
DOC. NO. 200003014197  
05/25/2000

MCL 1745  
KENNETH W. & LINDA L. WYANT  
C.R. VOL. 719, PG. 565  
07/20/1992

MCL 1745  
MEDINA COUNTY BOARD OF  
COMMISSIONERS  
DOC. NO. 10962032337  
06/15/1998

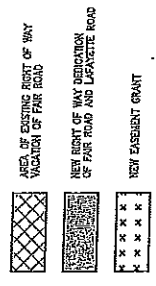
MCL 1765  
JAMES E. FUNK  
DOC. NO. 20060303475  
12/20/2006

2.0877 Ac. DEREGATED FROM MCL 1745  
(FAIR ROAD)

**PROPOSED FAIR ROAD 60'**  
(TO BE DEDICATED - 3.8354 Ac.)

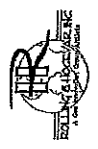
0.0688 Ac. DEREGATED FROM MCL 1785  
(FAIR ROAD)

PART OF MCL 1745 1767, 2200  
THE BOARD OF COUNTY  
COMMISSIONERS OF MEDINA COUNTY  
DEED VOL. 268, PG. 358  
03/17/1989

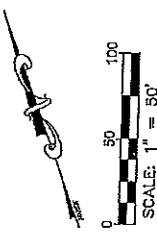


- LEGEND**
- - 3/8" IRON PIN FOUND W/CAP
  - ⊗ - 3/8" IRON PIN SET W/CAP ROLLING-HOGEVAR
  - ⊙ - 3/8" IRON PIN SET W/CAP ROLLING-HOGEVAR
  - ⊖ - 3/8" IRON PIN FOUND (NO CAP)
  - - STONE FOUND
  - ⊗ - RAILROAD SPIKE FOUND
  - △ - 9/16" ANGLE POINT (NO MARKER)
- Fnd. - FOUND  
 Req. - REQUIRED  
 Obs. - OBSERVED  
 Rec. - RECORD  
 Ust. - USED

CIVIL ENGINEERING & SURVEYING  
2475 SOUTH COURT STREET  
SUITE 6  
MEDINA, OHIO 44029  
PHONING (330) 733-8229  
FAX (330) 722-6857



PROJECT No. 31.485  
SHEET 2 OF 5



NOTE: BEARINGS ARE BASED ON  
ASSUMED TRUE NORTH AND ARE  
USED TO DETERMINE ANGLES ONLY.

**LAFAYETTE ROAD 60'**

0.0688 Ac. DEREGATED FROM MCL 1785  
(LAFAYETTE ROAD)

R/W LINE

R/W LINE

3/8" IRON PIN FND.

3/8" IRON PIN FND.

3/8" IRON PIN FND.

3/8" IRON PIN FND.

3/8" IRON PIN FND.

3/8" IRON PIN FND.

3/8" IRON PIN FND.

3/8" IRON PIN FND.

3/8" IRON PIN FND.

3/8" IRON PIN FND.

3/8" IRON PIN FND.

3/8" IRON PIN FND.

3/8" IRON PIN FND.

3/8" IRON PIN FND.

3/8" IRON PIN FND.

3/8" IRON PIN FND.

3/8" IRON PIN FND.

3/8" IRON PIN FND.

3/8" IRON PIN FND.

3/8" IRON PIN FND.

3/8" IRON PIN FND.

3/8" IRON PIN FND.

3/8" IRON PIN FND.

3/8" IRON PIN FND.

3/8" IRON PIN FND.

3/8" IRON PIN FND.

3/8" IRON PIN FND.

3/8" IRON PIN FND.

3/8" IRON PIN FND.

3/8" IRON PIN FND.

3/8" IRON PIN FND.

3/8" IRON PIN FND.

3/8" IRON PIN FND.

3/8" IRON PIN FND.

3/8" IRON PIN FND.

3/8" IRON PIN FND.

3/8" IRON PIN FND.

3/8" IRON PIN FND.

3/8" IRON PIN FND.

3/8" IRON PIN FND.

3/8" IRON PIN FND.

3/8" IRON PIN FND.

3/8" IRON PIN FND.

3/8" IRON PIN FND.

3/8" IRON PIN FND.

3/8" IRON PIN FND.

3/8" IRON PIN FND.

3/8" IRON PIN FND.

3/8" IRON PIN FND.

3/8" IRON PIN FND.

3/8" IRON PIN FND.

3/8" IRON PIN FND.

3/8" IRON PIN FND.

3/8" IRON PIN FND.

3/8" IRON PIN FND.

3/8" IRON PIN FND.

3/8" IRON PIN FND.

3/8" IRON PIN FND.

3/8" IRON PIN FND.

3/8" IRON PIN FND.

3/8" IRON PIN FND.

3/8" IRON PIN FND.

3/8" IRON PIN FND.

3/8" IRON PIN FND.

3/8" IRON PIN FND.

3/8" IRON PIN FND.

3/8" IRON PIN FND.

3/8" IRON PIN FND.

3/8" IRON PIN FND.

3/8" IRON PIN FND.

3/8" IRON PIN FND.

3/8" IRON PIN FND.

3/8" IRON PIN FND.

3/8" IRON PIN FND.

3/8" IRON PIN FND.

3/8" IRON PIN FND.

3/8" IRON PIN FND.

3/8" IRON PIN FND.

3/8" IRON PIN FND.

3/8" IRON PIN FND.

3/8" IRON PIN FND.

3/8" IRON PIN FND.

3/8" IRON PIN FND.

3/8" IRON PIN FND.

3/8" IRON PIN FND.

3/8" IRON PIN FND.

3/8" IRON PIN FND.

3/8" IRON PIN FND.

3/8" IRON PIN FND.

3/8" IRON PIN FND.

3/8" IRON PIN FND.

3/8" IRON PIN FND.

3/8" IRON PIN FND.

3/8" IRON PIN FND.

3/8" IRON PIN FND.

3/8" IRON PIN FND.

3/8" IRON PIN FND.

3/8" IRON PIN FND.

3/8" IRON PIN FND.

3/8" IRON PIN FND.

3/8" IRON PIN FND.

3/8" IRON PIN FND.

3/8" IRON PIN FND.

3/8" IRON PIN FND.

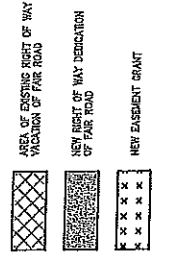
3/8" IRON PIN FND.



LINE	LENGTH	BEARING	LINE	LENGTH	BEARING
L1	30.04'	N 221°18'20" W	L21	6.85'	N 67°41'40" E
L2	148.80'	S 64°53'45" W	L22	29.05'	S 07°47'48" E
L3	60.16'	S 64°53'45" W	L23	287.40'	S 16°15'53" E
L4	297.55'	N 20°15'46" W	L24	566.00'	S 00°36'40" W
L5	308.80'	N 02°38'07" W	L25	13.82'	N 89°21'58" W
L6	165.13'	N 30°32'58" W	L26	5.81'	N 12°01'38" W
L7	327.06'	N 04°46'35" W	L27	17.74'	S 15°07'46" W
L8	503.93'	N 28°45'52" W	L28	114.03'	N 00°39'40" E
L9	294.83'	N 00°38'41" W	L29	294.75'	N 89°37'40" E
L10	136.59'	N 89°37'40" E	L30	60.01'	N 89°37'40" E
L11	289.86'	S 00°58'41" E	L31	49.01'	S 89°37'40" E
L12	503.53'	S 23°43'52" E	L32	74.96'	S 89°37'40" W
L13	327.06'	S 04°46'35" E	L33	22.02'	S 64°53'45" W
L14	165.13'	S 30°32'58" E	L34	255.37'	S 41°10'56" W
L15	308.80'	S 02°38'07" E	L35	308.80'	N 20°59'48" W
L16	253.18'	S 20°59'48" E	L36	165.13'	N 02°38'07" W
L17	8.38'	S 64°53'45" W	L37	327.06'	N 30°32'58" W
L18	314.27'	N 21°11'25" W	L38	503.93'	N 28°45'52" W
L19	344.92'	N 15°15'53" W	L39	303.68'	N 00°38'41" W
L20	55.35'	S 221°18'20" E	L40	455.04'	S 64°53'45" W
			L41	30.04'	N 221°18'20" W
			L42	53.62'	S 64°53'45" W

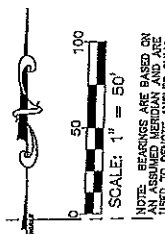
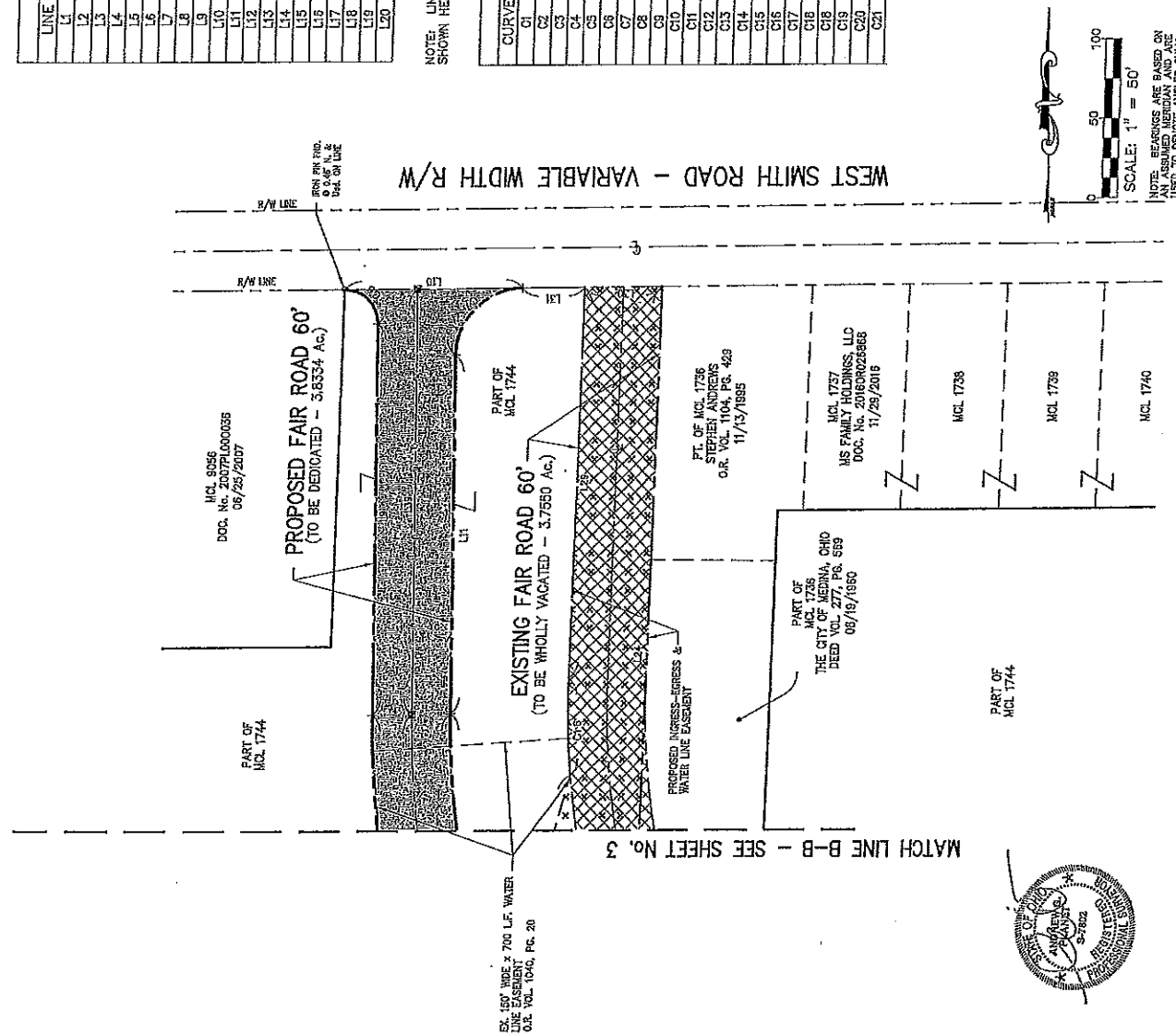
NOTE: LINE TABLE AND CURVE TABLE SHOWN HEREON FOR PLAT SHEETS 2, 3 & 4.

CURVE	LENGTH	RADIUS	TANGENT	DELTA	CHORD	CHD BRG.
C1	182.84'	510.00'	82.12'	1817.35"	182.18'	S 11°46'56" E
C2	180.26'	370.00'	91.95'	2754.91"	178.49'	N 16°55'33" W
C3	103.46'	290.00'	52.62'	2546.23"	102.50'	S 17°38'07" E
C4	119.88'	270.00'	57.28'	2397.17"	112.08'	N 18°48'14" W
C5	341.49'	705.00'	174.16'	2745.11"	358.18'	S 14°51'17" E
C6	41.07'	26.34'	26.07'	8824.95"	37.06'	N 45°40'56" W
C7	75.06'	50.00'	50.87'	9035.25"	71.07'	S 44°19'01" W
C8	312.43'	645.00'	158.34'	2745.11"	309.38'	N 14°51'17" E
C9	137.87'	350.00'	70.01'	2557.17"	136.97'	N 16°45'14" W
C10	76.47'	170.00'	38.85'	2546.23"	75.53'	S 17°38'07" E
C11	208.49'	450.00'	106.87'	2754.91"	207.43'	N 16°55'33" W
C12	143.88'	450.00'	72.48'	1817.35"	143.07'	S 11°46'56" E
C13	128.31'	510.00'	64.80'	1424.95"	127.98'	S 13°43'18" E
C14	70.40'	645.00'	35.03'	615.12"	70.38'	S 21°25'49" E
C15	48.71'	50.00'	26.49'	5549.16"	48.61'	N 43°02'24" E
C16	75.67'	625.04'	38.88'	6451.0"	73.82'	S 02°43'58" E
C17	198.04'	345.00'	98.27'	1719.32"	194.30'	N 09°38'27" E
C18	70.81'	32.00'	63.89'	12647.24"	57.22'	N 75°28'20" W
C19	70.81'	32.00'	63.89'	12647.24"	57.22'	N 75°28'20" W
C20	153.26'	480.00'	77.29'	1817.35"	152.51'	S 11°46'56" E
C21	194.88'	400.00'	99.44'	2734.81"	192.98'	N 16°55'33" W
C22	89.55'	200.00'	45.75'	2546.23"	89.21'	S 17°38'07" E



CIVIL ENGINEERING & SURVEYING  
 237 SOUTH COURT STREET  
 MEDINA, OHIO 44028  
 PHONE: (330) 723-1928  
 FAX: (330) 723-6837  
 PROJECT No. 31485  
 SHEET 4 OF 5

WEST SMITH ROAD - VARIABLE WIDTH R/W



NOTE: BEARINGS ARE BASED ON THE ASSUMED TRUE MERIDIAN. ALL ANGLES USED TO DEDUCE ANGLES ONLY.



