



PROPERTY HIGHLIGHTS

- Total Acreage: 3.09 acres
- Price Per Acre: \$72,815.53
- Frontage: 540' on W Liberty Street/SR-18
- Depth: 238'
- No Front Yard Setback | 30' Rear Yard Setback
- Topography: Level
- All utilities available at the street
- Zoning C-3 General Commercial District | Medina City | Buckeye Local
- 2024 Annual Taxes: \$886.74

Permitted Uses:

Convenience Retail, Heavy Duty Repair Services for Machinery & Equipment Including Repair Garages and Specialty Establishments including Motor, Body, Fender, Radiator Work, Restaurant, Commercial Recreation, etc.

Conditional Uses:

Car Wash, Child Day Care Center, Motor Vehicle Filling Station, Hospital, Personal & Professional Services with Drive-Thru, etc.

LISTING AGENT

Sam Tecca

Sam@GerspacherGroup.com

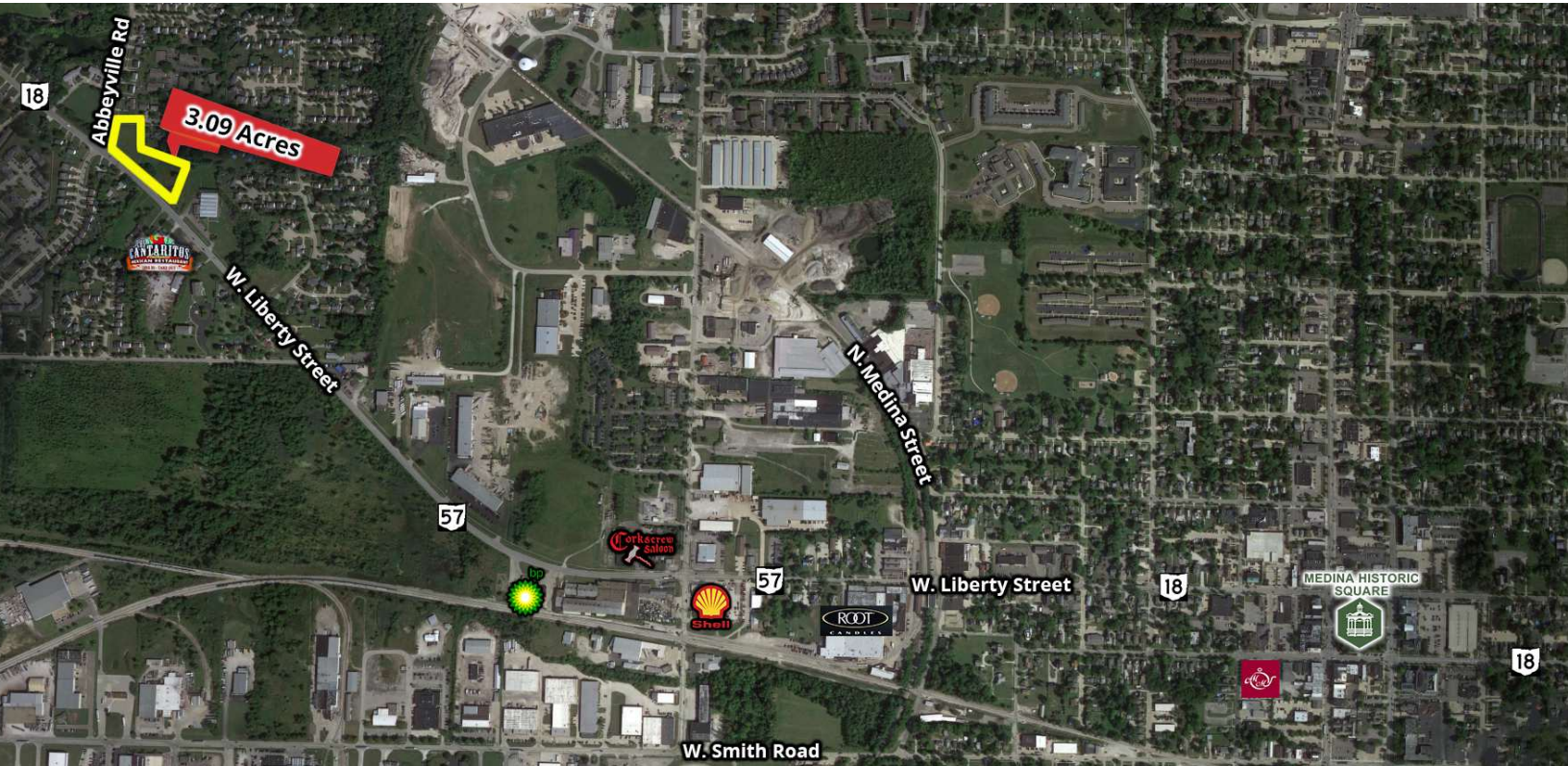
330.722.5002



CORNER LOT ON W LIBERTY ST & ABBEYVILLE RD



3.09 ACRES
W LIBERTY ST & ABBEYVILLE ROAD
MEDINA, OH 44256
SALE PRICE: \$225,000



PROPERTY OVERVIEW

Abbeyville Road in Medina, Ohio is 3.09 acres of land for sale. The frontage is 540 feet and the depth is 238 feet. The zoning is C-3. Gas, sewer, water, electric, internet and survey are available. This property would be perfect for Commercial Recreation, Convenience Retail, Drive-in Restaurants, Offices, Retail, Gas Station, Multi-Family Dwelling, or a Car Wash.

LOCATION OVERVIEW

West of Medina on West Liberty (Route 18) and Abbeyville Road

DEMOGRAPHICS

	1 MILE	5 MILES	10 MILES
Total Households	1,358	21,449	58,701
Total Population	3,278	55,815	156,038
Average HH Income	\$56,311	\$77,747	\$79,814

The information contained herein is from sources deemed reliable but no warranty or representation is made to the accuracy thereof.

